



Southern Odyssey: New Zealand and the Subantarctic Islands

Discover New Zealand from the North Island to its most remote islands in the Southern Ocean. Explore natural wonders like Abel Tasman National Park and Milford Sound, and visit towns that tell the country's story. Admire the Art Deco architecture of Napier, and get acquainted with Māori culture in Gisborne. Cap off the experience amid penguins and sea lions in New Zealand's seldom-visited subantarctic islands, designated a UNESCO World Heritage site.

From
\$ 28,962 / per person
Does not include flights

| | |
|--|---|
|  DATES Nov and Dec |  DURATION 20 Days |
|  SHIPS <i>National Geographic Orion</i> | |
|  STARTS AT Dunedin, New Zealand |  ENDS AT Auckland, New Zealand |

Itinerary note: Routing may vary and stops may be subject to modification and/or permitting.

Highlights

- ★ Get immersed in beauty: scenic beaches and lush native forests in the North Island and deep fjords and dramatic landscapes in the South Island
- ★ Discover the history and dynamic culture of New Zealand and the Māori people
- ★ Explore the sub-Antarctic islands which remain almost completely protected from human activity and are home to a diverse collection of endemic plant and animal species
- ★ Delve into New Zealand's cultural riches—from Napier's Art Deco architecture to historical Māori sites





Day by day

■ DAY 1

Auckland, New Zealand

Arrive in Auckland and transfer to our hotel. Join us for a welcome briefing this evening to meet your fellow travelers.

Arrival Time: Arrive by 4:00 p.m.

Arrival City: Auckland, New Zealand

◇ DAY 2

Auckland / Dunedin / Embark Ship

Have breakfast at the hotel before transferring to the airport for a flight to Dunedin. Spend the day touring the city before embarking *National Geographic Orion* in the late afternoon.

Meals included: breakfast, lunch, dinner

◇ DAYS 3-4

Stewart Island / At Sea

Stewart Island, known in Māori as Te Punga o Te Waka a Māui, is positioned firmly at the heart of Māori mythology. Today we'll explore the island's rare native birdlife as well as its well-preserved podocarp forest, alive with a cacophony of birdsong. In the afternoon, discover Stewart Island's nearby neighbor, Ulva Island, where we'll hike with naturalists to discover its unspoiled rainforest. Enjoy a day at sea getting to know your fellow travelers as we scout for local wildlife and attend briefings and lectures from our staff.

Meals included: breakfast, lunch, dinner

◇ DAYS 5-6

Campbell Island / At Sea

A large island, surrounded by 4 smaller islands and innumerable rocks and islets, the Campbell Island

group is officially the southernmost territory of New Zealand. Covered with endemic grasses and thick vegetation and boasting steep terrain, Campbell is dramatic and beautiful. Here we will find six species of albatross, an endemic duck (the Campbell Island teal), and an endemic snipe, as well as numerous songbirds and sea birds who breed on the island. Three species of penguin also make their home on here. Relax as we spend the following day sailing to our next stop.

Meals included: lunch, breakfast, dinner

◇ DAYS 7-9

Macquarie Island, Australia / At Sea

We will spend two days at remote Macquarie Island, a protectorate of Australia and a World Heritage site. Macquarie is home to a large variety of wildlife, including thousands of seals and millions of penguins. Four species of penguin breed here. The endemic royal penguin has a population estimated at 850,000. Gentoo and southern rockhopper penguins also breed here. And imagine landing on a single beach with 100,000 pairs of king penguins, the third largest such colony in the world!

Our time at sea between islands presents an opportunity to head up to the bridge to watch the calm business of navigation. Or spend these days enjoying the ship's spa, and fitness center. Take some time to browse the library or play a board game in the glass-enclosed observation lounge. And listen to a variety of engaging talks from our staff, including photo talks.

Meals included: breakfast, lunch, dinner

◇ DAY 10

Auckland Islands, New Zealand

Spend the next several incredible days discovering

New Zealand and Australia's subantarctic islands and their surrounding waters—the entire marine landscape designated a UNESCO World Heritage site. We have special permission to explore these strictly regulated islands, which are protected at the highest level of conservation status by the New Zealand government, and considered “bird central” among top ornithologists around the world. Keeping a flexible weather-dependent schedule, we plan to explore several intriguing islands.

Located south of the New Zealand mainland in the remote Southern Ocean, today we begin our exploration of the wild and beautiful sub-Antarctic islands. These remote islands play host to abundant and unique wildlife, with many species of birds, plants and invertebrates found nowhere else in the world. The Auckland Islands are the largest of New Zealand's subantarctic islands, with the richest flora, prolific birdlife, and an interesting human history. If we are fortunate, we may see rare yellow-eyed penguins as they move to and from their nests in the forests beyond the beach.

Meals included: breakfast, lunch, dinner

◇ DAY 11

Snares Islands

Two small rocky islands, North East and Broughton, comprise The Snares, the closest subantarctic islands to New Zealand. The islands are covered with heavy tussock grass and wind-beaten forests of tree daisies. The Snares are home to huge numbers of breeding birds: the 99 recorded species include albatross, Antarctic terns and Snares crested penguins.

Meals included: breakfast, lunch, dinner

◇ DAYS 12-14

Dusky Sound / Milford Sound / At Sea

Over the course of two days we will explore

Fiordland National Park, home to fourteen individual fiords. Here we'll discover hundreds-meter-high waterfalls, the snowcapped peaks of Milford Sound, and the thickly forested islets of Dusky Sound, which host a myriad of bird species overhead, including the kākā. Enjoy views of New Zealand's southern island as we spend a day cruising to our next stop.

Meals included: breakfast, lunch, dinner

◇ DAY 15

Abel Tasman National Park or Marlborough Sounds

Explore this beautiful island where golden beaches and dense rainforests border the snow-capped Southern Alps. By special permission from the Department of Conservation, visit either Abel Tasman National Park or Marlborough Sounds. Abel Tasman National Park, New Zealand's smallest national park, is renowned for its golden sand beaches and rugged granite cliffs that kiss the shoreline. Alternatively, discover the stunning, sea-drowned valleys of Marlborough Sounds. Explore either on hikes and walks with our naturalists or just by relaxing at the beach.

Meals included: breakfast, lunch, dinner

◇ DAY 16

Napier

Spend the morning getting to know Napier, the Art Deco capital of New Zealand. Choose to discover the city's unique architecture on an art tour, or leave the city behind and join us on a Gannet Safari Tour where we have close encounters at a large Australasian gannet colony.

Meals included: breakfast, lunch, dinner

◇ DAY 17

Gisborne

Today we delve into the cultural riches of Gisborne

- the site of the first European landing in New Zealand in 1769. The city's warm, sun-filled climate reflects its disposition and complements its rich soils, bountiful islands, miles of sandy beaches, and resource-rich oceans. Visit a local marae –a traditional meeting place—and gain insight into the history and culture of the people of this region. In the afternoon, discover the greenery of a local arboretum, and cap the day off with a wine tour and tasting.

Meals included: breakfast, lunch, dinner

◇ DAYS 18-19

Exploring Coastal New Zealand

As we continue south along the North Island's verdant coast, we let nature guide us as your Captain and Expedition Leader choose our next site for exploration.

Meals included: breakfast, lunch, dinner

■ DAY 20

Auckland / Disembark Ship

Have breakfast aboard the ship before disembarking and joining a tour of this vibrant city center. We stop for lunch midday before transferring to the airport for flights home.

Departure Time: Depart after 5:00 p.m.

Departure City: Auckland, New Zealand

Meals included: breakfast, lunch

2024 (Northbound)

Dunedin, New Zealand → Auckland, New Zealand

2024 Departure Dates

Aboard *National Geographic Orion*

| | | |
|--------|--|--|
| 03 Dec | | |
|--------|--|--|

Alternative Routes

Visit Expeditions.com for more information.

2024 Departure Dates

| |
|--------|
| 15 Nov |
|--------|



National Geographic Orion

Guests

102

Cabins

53

Joining the Lindblad fleet in 2013, the state-of-the-art *National Geographic Orion* serves as a luxurious base camp for voyages to the far-flung corners of the planet.

Built in Germany by the Cassens shipyard, the 102-guest *National Geographic Orion* was created with a high-ice class to be able to venture safely into polar regions. A ship of her size is seldom built with such ice-cutting ability, which makes her a rarity. She is yacht-scale, yet rugged enough to venture far afield, making her a perfect addition to the Lindblad fleet, which she joined in 2013. Her size and nimbleness offer the perfect combination of safety and liberty to voyage untrammelled locations. In fact, *National Geographic Orion* currently holds the distinction of having sailed further south than any other Lindblad vessel.

Her menu, created by famed Australian chef, Serge Dansereau, owner of Sydney's acclaimed Bather's Pavilion restaurant, enormously popular with *National Geographic Orion's* guests, so impressed Sven Lindblad, that Serge, a chef-owner who shared the Lindblad commitment to serving local and sustainable food, was enlisted to design the dining program for the entire Lindblad-National Geographic fleet.

National Geographic Orion is gracious and intimate, with a rewarding, almost clubby feeling. Of her many amenities and features, the most appealing is her outside deck space which beckons in the balmy reaches of the Pacific, and on those days in Antarctica when the midnight sun and the spectacle of the ice makes going indoors, let alone going to bed, impossible.



Cabin Categories

Category 1

Main Deck: #316, 318-321

Cabins feature a luminous oval window and configurable beds: two single beds that can be converted to a queen. An armchair, reading lamps, a flat screen TV, two bedside tables, coffee table, desk, and climate controls complete the amenities. Marble bathrooms are generously sized and include a spacious shower stall with a glass door.



Category 2

Main Deck: #302-312, 314, 315, 317

Cabins feature a luminous oval window and configurable beds: two single beds that can be converted to a queen. An armchair, reading lamps, a flat screen TV, bedside table, coffee table, desk, and climate controls complete the amenities. Marble bathrooms are generously sized and include a spacious shower stall with a glass door.



Category 3

Upper Deck: #401-412, 414-419

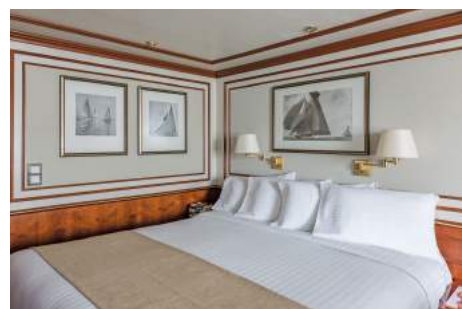
These suites feature a sitting area with a large window, a sofa—except slightly smaller #401 & #402—an armchair or two, writing/laptop desk, reading lamps, coffee table, flat screen TV, bedside table, & climate controls. Beds are configurable (call for details). Marble bathrooms include a spacious shower stall with a glass door.



Category 4

Bridge Deck: #511, 515

These two suites feature separate sleeping and sitting areas, with a chair and armchair, coffee table, and a two-cushion sofa facing an expansive window. Beds are configurable (call for details). Ample storage, reading lamps, a flat screen TV, and climate controls complete the amenities. Marble bathrooms are generously sized and include a spacious shower stall with a glass door.



Category 5

Bridge Deck: #501, 503-506, 508

These spacious suites feature open living areas and sliding glass doors opening to a shared French balcony. Beds are configurable (call for details). A separate sitting area with armchairs and a sofa, a writing/laptop desk, coffee table, well-placed reading lamps, a flat screen TV, and climate controls complete the decor. Marble bathrooms are generously sized and include a spacious shower stall with a glass door.



Category 6

Bridge Deck: #502, 507, 509*, 510

These large, elegant suites feature a French balcony, except for #509 which has double windows. Each provides a separate living area with a sofa and two armchairs, coffee table, except for #502, which uniquely offers a 'soaking tub with a view' in addition to a shower stall and expansive vanity. All cabins have reading lamps, a flat screen TV, and climate controls. Marble bathrooms are generously sized and include a spacious shower stall with a glass door.



Category 1 Solo

Main Deck: #301, 322, 323

These solo cabins feature a window or two portholes, a queen-size bed, except for #301 which has a double bed, writing desk and chair, climate controls, reading lamps, coffee table, two bedside tables, and a TV. Marble bathrooms are generously sized and include a roomy shower stall with a glass door.



Category 3 Solo

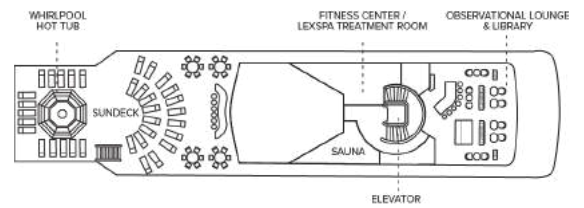
Upper Deck: #512

This solo suite features two single beds and two large windows, plus two armchairs and a small table, reading lamps, coffee table a flat screen TV, and climate controls. The marble bathroom is generously sized and includes a spacious shower stall with a glass door.



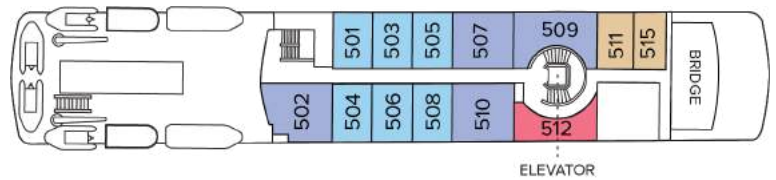
Deck Plans

Observation Deck



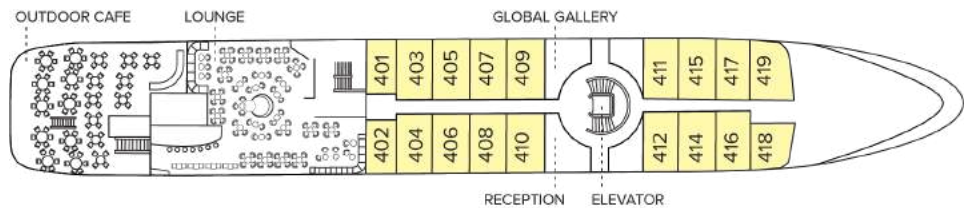
Bridge Deck

- Category 4
- Category 5
- Category 6
- Category 3 Solo



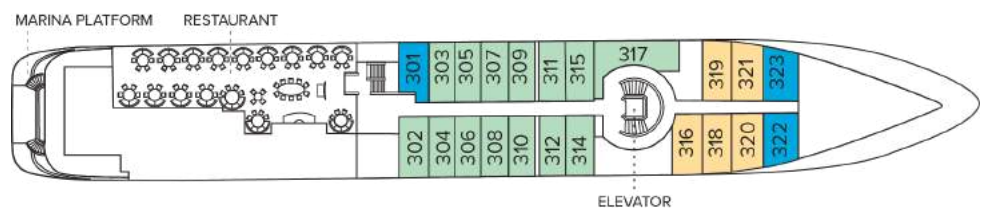
Upper Deck

- Category 3



Main Deck

- Category 1
- Category 2
- Category 1 Solo



Expedition Deck



Ship amenities

Public Areas

Reception; two dining areas; lounge with bar and state-of-the-art presentation facilities; B&H Photo locker; sundeck with a whirlpool hot tub that doubles as a plunge pool in warm climates; observation lounge and library; global gallery; a marina platform; plus open access to the Bridge, the Captain, officers and on-duty wildlife spotters.

Meals

Meals are served in the dining room, or weather permitting, the outdoor café, at a single seating with unassigned tables for an informal atmosphere and easy mingling. Menus feature sustainable choices, local where possible.

Cabins

All cabins face outside with windows or portholes, private bathroom, and climate controls. Cabins feature a coffee table, lounge chair, desk, phone, TV with on demand entertainment, multiple outlets and USB, mini refrigerator, and safe. Luxury linens and pillows. Botanically inspired shampoo, conditioner, shower gel, and lotion are all available in cabin bathrooms, as well as an Expedition Essential Kit. Hair dryers, complimentary insulated water bottles and a National Geographic Atlas is available in each cabin.

Expedition Equipment

Zodiac landing craft, a fleet of double kayaks, a crow's nest camera, a hydrophone, underwater video cameras, video microscope, and an ROV. Plus, for South Pacific voyages: snorkeling gear for all guests, scuba gear for a number of pre-qualified guests, stand-up paddleboards, glass-bottom Zodiac, and splash-cam.

Special Features

A full-time doctor, undersea specialist, National Geographic photographer, Lindblad-National Geographic certified photo instructor and video chronicler. On all South Pacific voyages, there are a minimum of two dive masters. A central staircase, and elevator reaches all decks. Enjoy teatime, daily. And the smoothies served after the sunrise stretch sessions on the sundeck in Polynesia. Don't miss either opportunity.

Wellness

A fitness center, LEXspa treatment room and sauna, staffed by wellness specialists.

Self-Disinfecting Ships

ACT Clean Coat™ is a light-activated, self-disinfecting cleaning process that continuously breaks down viruses, bacteria, mold, and airborne allergens across all ship surfaces. This non-toxic, chemical-free system also helps us save over one million gallons of water each year in our cleaning procedures.

Special Offers

SUITE EXCLUSIVES

Spacious living areas and incredible views immerse you in the beauty of your marine surroundings.

Our new Suite Exclusives package helps make your voyage all the more memorable. [Learn more](#)

CELEBRATE LIFE'S MILESTONES

Celebrate a milestone with a group of eight or more and enjoy a special amenity package including: 5% savings on voyage fares, custom group photo, US\$150 shipboard credit for the group, and other special gifts.

Milestone celebration to be communicated at time of booking. Valid for new bookings only on select departures, subject to availability, not applicable on airfare or extensions, and may not be combined with other offers. Deposit, final payments, and cancellation policies for group travel vary from our regular policies. Call for details.

10% OFF BACK-TO-BACK VOYAGES

Save 10% on consecutive departures, applicable on voyage fares only and not valid on extensions or airfare. Valid for new bookings only, subject to availability, and may not be combined with other offers. Call for details.

BRINGING THE KIDS

We believe sharing an expedition with children is a life-enhancing experience. Take \$500 off for each child under the age of 18 on any departure. Not applicable on extensions or airfare. Call for details.

SAVE 5% TRAVELING AS A GROUP

Save 5% when traveling as a group of eight or more

people. Valid on voyage fares only and not applicable on extensions or airfare. Deposit, final payments, and cancellation policies for group travel vary from our regular policies. Valid for new bookings only, subject to availability, and may not be combined with other offers. Call for details.

COMBINING OFFERS

Certain offers may be combinable, up to two savings opportunities, except where noted otherwise.

For example, travel with a group of 8 or more on back-to-back expeditions, and take advantage of both savings.

Included in price

All accommodations aboard ship or in hotels per itinerary; all meals as indicated in the itinerary, both aboard and onshore; beer, wine, cocktails, and spirits aboard the ship (except certain super premium brands which are available for purchase); hors d'oeuvres, 24-hour access to snacks, premium coffees and teas, non-alcoholic beverages, and filtered water; excursions and airport transfers to and from recommended flights, as indicated in the itinerary; crew gratuities; exploration tools curated to destination, such as Zodiacs, stand-up paddleboards, kayaks, snorkeling equipment (including wetsuits, masks, and fins); guidance and company of our leading expedition staff; assistance by the National Geographic Photography Expert and Lindblad Expeditions-National Geographic certified photo instructor; access to the OM System Photo Gear Locker; presentations by expedition staff and expert guest speakers; complimentary reusable water bottle; services of a physician, physician's assistant, nurse practitioner, or paramedic; morning stretch classes and 24-hour access to exercise equipment; 24-hour access to lounges, observation decks, library, and other shared spaces; park and site entrance fees, special access permits, and port taxes. Unused services or items included in our programs are non-refundable.

Not included in price

Airfare (except flights when indicated as included); pre- and post-expedition extensions; additional hotel nights (except when indicated as included); private transfers; laundry, spa treatments, scuba diving for pre-qualified divers on select voyages*, Wi-Fi, and phone services (except when indicated as included); travel protection plans; and passport, visa, and immigration fees.

*Scuba Diving Requirements

- Dives can be challenging so divers must have ample previous experience
- Divers need at least 25 lifetime dives if you're advanced open water and at least 35 if you're just open water
- Divers need to have completed an open water dive or professional refresher course within 12 months of the voyage
- Divers need to receive medical clearance to dive from a doctor (form provided upon registration) and provide proof of dive insurance

Travel protection plan

We strongly recommend our guests to take advantage of our Travel Protection Plan. This plan offers comprehensive coverage to protect you from cancellation fees, costs incurred due to trip delays/interruption, damage or loss of baggage, medical assistance, and evacuation during your travels. Our Travel Protection Plan is available for U.S. residents only, and may be purchased any time prior to final payment due date, Travel Protection premiums are non-refundable once plan is purchased. Learn more about our Travel Protection "Plus" Plan: <https://www.expeditions.com/terms-conditions/travel-protection-plan/>

Cancellation policy

Review our cancellation policy: <https://www.expeditions.com/cancellation-policy/>