








 Mediterranean, New and Noteworthy, Mediterranean & Europe
35° 53' N 14° 30' E

Sailing the Ancient Shores of Sicily and Malta aboard Sea Cloud

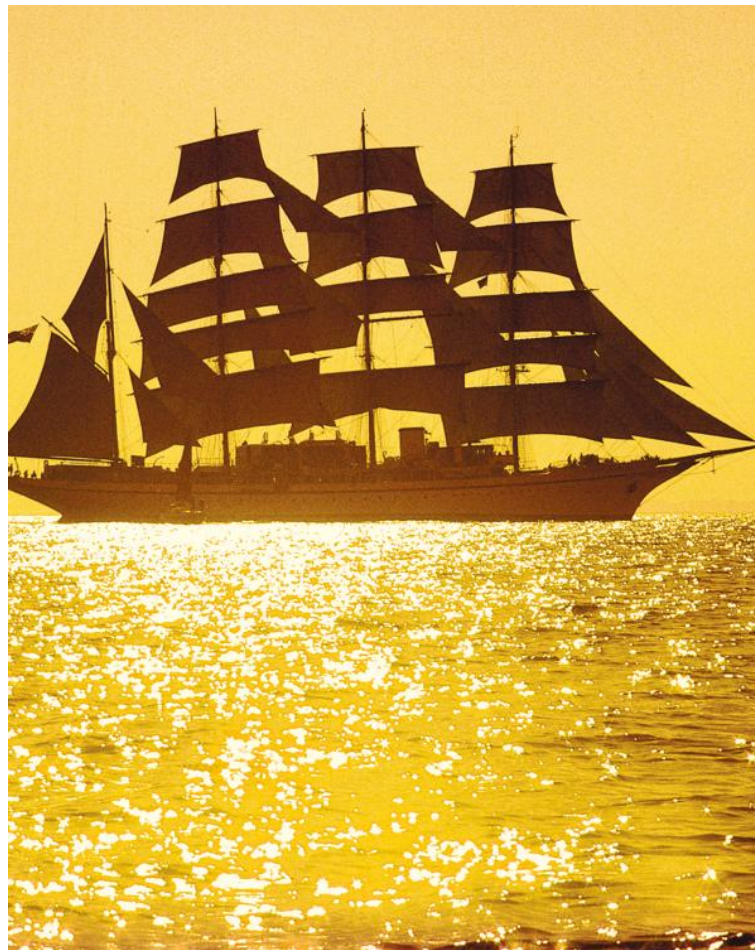
Set sail aboard the majestic four-masted tall ship *Sea Cloud* to explore the culture, history, and cuisine of Sicily and Malta. Step into the past in cities and temples left behind by the Romans, Greeks, Carthaginians, and prehistoric peoples. Visit four UNESCO World Heritage sites: Agrigento, Siracusa, the Aeolian Islands, Malta’s megalithic temples, and enjoy views of a fifth—Mount Etna. Discover the unique flavors of the region, including the renowned Marsala wines.

From
\$ 19,550 / per person
Does not include flights

 DATES May	 DURATION 11 Days
 SHIPS <i>Sea Cloud</i>	
 STARTS AT Valletta, Malta	 ENDS AT Naples, Italy

Highlights

- ★ Sail the shimmering waters of the Mediterranean, Tyrrhenian, and Ionian Seas aboard *Sea Cloud*, the world's most beautiful tall ship
- ★ Explore enchanting piazzas and winding alleyways of picturesque towns from Lipari to Taormina and Ortigia
- ★ Visit an array of UNESCO World Heritage sites, from Greco-Roman ruins in Siracusa and Agrigento to the ancient temples of Ġgantija
- ★ Experience Sicily's unique cuisine at a wine tasting in Marsala, at Erice's renowned Pasticceria Maria Grammatico, and at a private lunch in a historic castle near Taormina





Day by day

■ DAY 1

Valletta, Malta / Embark Ship

Arrive in Valletta, Malta's capital city, surrounded by daunting limestone fortifications that date back to the 16th century. Embark *Sea Cloud* in the late afternoon, settle in, and enjoy the first night onboard.

Arrival Time: Arrive before 4:00 p.m. local time.

Arrival City: Valletta, Malta

Meals included: dinner

◇ DAY 2

Gozo / At Sea

This morning we visit Malta's "second island," Gozo, with our focus on the ancient megalithic temples of Ġgantija, a UNESCO World Heritage site. Older than both the Pyramids of Giza and Stonehenge, the giant structures of Ġgantija were built by civilizations that thrived here more than 5,000 years ago. We also visit the restored medieval windmill of Ta Kola—one of the many structures built by the Order of the Knights of Malta, who ruled the Maltese islands for centuries—before returning to *Sea Cloud* and an afternoon cruising back to Sicily, with hopes of sailing in the afternoon winds.

Meals included: breakfast, lunch, dinner

◇ DAY 3

At Sea

Join our expedition leader for a play-by-play description of the crew in the rigging and the action of the setting of square sails, staysails, and jibs as *Sea Cloud* shows her full glory. Bask in the comfort and intrigue of this legendary and historic square-rigger—enjoy delicious meals, complimentary

drinks, and talks by the expedition staff as we sail south toward Sicily.

Meals included: breakfast, lunch, dinner

◇ DAY 4

Erice, Sicily / Marsala

After *Sea Cloud* docks in Trapani this morning, we depart on an excursion to nearby Mount Erice to visit the medieval town of Erice. Perched 750 meters above Sicily's western coast, the panoramic views from the walled town are spectacular. Explore Erice with local guides and take time to wander on your own. Perhaps stop in at the renowned Pasticceria Maria Grammatico, or one of the many other local favorites, before we continue to the town of Marsala. Famous for its fortified wines, this port city also houses an excellent museum devoted to its Punic (Carthaginian) history, as well as an excavated Punic warship and a recently opened excavated Roman merchant vessel. We finish with a visit and tasting at a winery before returning to *Sea Cloud* in Trapani. Sail overnight to Porto Empedocle for Agrigento.

Meals included: breakfast, lunch, dinner

◇ DAY 5

Agrigento / At Sea

We dock in Porto Empedocle this morning for our next call: Agrigento's Valley of the Temples, a UNESCO World Heritage site that is a collection of some of antiquity's most magnificent Greco-Roman temples. Founded by the Greeks in the 6th century B.C., the site served as a prominent city in Magna Graecia before eventually changing hands between the Carthaginians, Romans, Byzantines, Arabs, and Normans. Explore the valley's grand row of Doric temples devoted to the likes of Zeus and Heracles. Return to *Sea Cloud* and cast off for a relaxing afternoon under sail.

Meals included: breakfast, lunch, dinner

◇ DAY 6

At Sea

Grab your favorite deck chair, indulge in a good book, and listen to the ship part the surf as we sail along Sicily's southern coast. Weather permitting, stand on deck and watch the orchestrated frenzy of crew members go aloft in the web of *Sea Cloud's* riggings to handset 30 sails. Or, attend a presentation from our historian or cultural expert about the region's rich history.

Meals included: breakfast, lunch, dinner

◇ DAY 7

Siracusa, Italy

Wake this morning to Siracusa, a city that once rivaled Athens in cultural and economic wealth. We explore the archaeological park, which showcases one of the world's largest theaters of antiquity, a 15,000-seat arena hewn from bedrock, which is still in use today. We also visit the nearby limestone quarry, the cave of "Dionysus' Ear," and the Roman amphitheater before returning to *Sea Cloud* for lunch. This afternoon, venture to the enchanting island town of Ortigia to discover its numerous little piazzas and twisting alleys. But the main feature is the Duomo, or Cathedral, which was built from the ruins of Sicily's ancient Temple of Athena. The history of Sicily can be told in the walls of this incredible construction.

Meals included: breakfast, lunch, dinner

◇ DAY 8

Taormina / Messina

Drive up to the beautiful town of Taormina, which spills across the slopes at the foot of Mount Etna, dominating to the south. This medieval town boasts the pedestrian-friendly Corso Umberto, lined with exquisite buildings, and one of the world's most

interesting cultural sites: the Greco-Roman Theater. This remarkable theater was built right into the cliffside, overlooking the vast sea below, in the third century B.C. From Taormina, we continue to the Castello degli Schiavi, an 18th-century privately owned villa, for a special private lunch. Meet members of the family that still owns the villa and explore the extensive buildings and grounds that served as the setting for many scenes in *The Godfather* films. We then return to *Sea Cloud*, docked in the port of Messina. Enjoy dinner on deck as our vessel follows the wake of Odysseus through the narrow Strait of Messina, the bustling waterway that separates Sicily from the boot of Italy. It is the mythical location of Homer's monsters Scylla and Charybdis—the rock and the hard place through which Odysseus had to sail.

Meals included: breakfast, lunch, dinner

◇ DAY 9

At Sea / Lipari / Stromboli

The Aeolian Islands are not only famous for the winds of the god Aeolus, but also for some of the most well-known classical volcanoes. We sail in the morning with the islands of Vulcano and Stromboli in view, anchoring for the afternoon at Lipari. Here we go ashore for a scenic drive around the perimeter of the island, with fantastic views of the other Aeolian volcanoes, before returning to the main town. We visit the small but surprising archaeological museum that has an extensive collection of Neolithic artifacts made from the local obsidian, which provided the foundation of the island's prosperity during the Greco-Roman era. This evening, we enjoy dinner on deck as *Sea Cloud* cruises the 25 miles to Stromboli—and, with a little luck, we see some of the pyrotechnics of this active volcano, a perfect way to end such an adventurous voyage.

Meals included: breakfast, lunch, dinner

◇ DAY 10

At Sea

After such an action-packed voyage, we take a full day for sailing, reflection, and relaxation. Join our expedition staff for talks on the Lido Deck as the captain takes advantage of the prevailing wind for optimal sailing. Aboard *Sea Cloud* there will be time to catch up on journals, review photos, ask questions, sample a collection of Sicilian wines, and simply enjoy the thrill of an extended sail on this historic square-rigged tall ship. This evening, we'll celebrate our voyage with the captain's farewell cocktail party and dinner at sunset.

Meals included: breakfast, lunch, dinner

■ DAY 11

Naples / Disembark Ship

Disembark in the port of Naples this morning and transfer to the airport for your flights home.

Departure Time: Depart after 12:00 p.m. local time.

Departure City: Naples, Italy

Meals included: breakfast

2024

Valletta, Malta → Naples, Italy

2024 Departure Dates

Aboard *Sea Cloud*

09 May			
--------	--	--	--



Sea Cloud

Guests

58

Cabins

30

The historic Marjorie Merriweather Post sailing yacht, the latest tall ship in private hands, was built in 1931 and carries 30 sails measuring a total of 32,000 Sq. ft.

Traveling aboard *Sea Cloud*, a historic four-masted barque, is an overall multisensory experience of the rarest kind—and this is true wherever you choose to explore. *Sea Cloud* in the Caribbean is idyllic because little competes with the sensual pleasure of the balmy air and the constant trade winds that invite everyone out on deck. And *Sea Cloud* in the Mediterranean is quintessential because it provides nonstop opportunities to set off from our anchorages or ports—where *Sea Cloud* is invariably the most beautiful ship—to explore the extraordinary beauty and charm of coastal towns and linger among antiquities and sites "sacred" to Western civilization.

The sheer opulence—antique furnishings, marble fireplaces, gold fixtures, exquisite accoutrements—of *Sea Cloud* is a testament to the efforts of the ship's original owners, businesswoman and socialite heiress Marjorie Merriweather Post and finance tycoon E.F. Hutton, who spared no expense in tasteful decoration. Supposedly they never asked the price of a single item while outfitting her.

Whether you're passively watching the athletic young crew scrambling high in the rigging, lolling in what Marjorie Merriweather Post called the "Blue Lagoon," or learning to capture the sun on the sails with your Lindblad-National Geographic certified photo instructor, life aboard *Sea Cloud* is either the point or the perfect interlude between explorations. And remember, another rarity we offer is *Sea Cloud* elegance, enjoyed with Lindblad Expeditions' signature informality—pack your deck shoes and shorts, please!

Return to the golden age of sail aboard this hand-sailed, four-masted ship. Built in 1931 by Wall Street businessman E.F. Hutton for his wife, Marjorie Merriweather Post, *Sea Cloud* carries 30 sails measuring a total of 32,000 square feet.



Cabin Categories

Category 1

Promenade Deck: #28-29

These cabins have two single beds and a large panorama window. Cabin features include telephones, temperature controls, a minibar, closet, dressing table, small safe, and a beautiful bathroom with marble sink and gold-plated fixtures.



Category 2

Promenade Deck: #18-25

These cabins have two single beds, panorama window, dressing table, and efficient bathrooms with showers, marble sink, and gold-plated fixtures. They have telephones, temperature controls, a minibar, and a small safe.



Category 3

Lido Deck: #32-37

These cabins have two single beds (which can be pushed together to make a queen-size bed, with one side against the wall), a writing desk and chair, panorama window, bathrooms with a marble sink, and gold-plated fixtures. They have telephones, temperature controls, a minibar, and a small safe.



Category 4

Lido Deck: #30-31

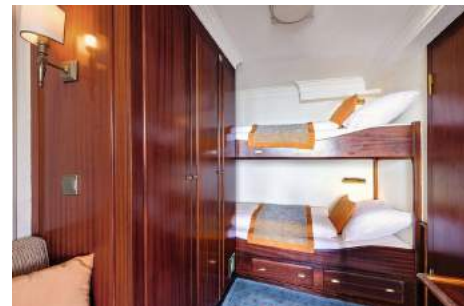
Cabins have a queen-size bed, a forward-facing panorama window and a side-facing window, walk-in closet, a writing desk and chair, and bathrooms with a marble sink, and gold-plated fixtures. They have telephones, temperature controls, a minibar, and a small safe.



Category A Solo

Promenade Deck: #16-17

These solo cabins feature single beds and a window; they once housed the ship's officers. They are equipped with temperature controls and a minibar. Ice is delivered twice daily. Each cabin is equipped with a telephone, small sofa, and small safe. Bathrooms feature marble sinks and gold-plated fixtures.



Category DB

Main Deck: Deluxe B Original and deluxe cabins #5, 6, 9, 10

Located on the Main Deck, these very large cabins, originally occupied by guests (and the nannies, #9-10) of the owner, have a mix of bed types and decorative motifs. All have portholes, one chair, table, two nightstands, dressing table with mirror, walk-in closet and small safe. Bathrooms are well appointed with a marble sink and gold-plated fixtures.



Category DA

Main Deck: Deluxe A Original and deluxe cabins #3, 4, 7, 8

These very spacious cabins, originally occupied by guests of the Posts, have a mix of bed types and decorative motifs. These wood-paneled rooms feature various armchairs, marble fireplaces, and antique furnishings. All have two portholes, two chairs, an antique nightstand, antique secretary, decorative marble fireplace, antique desk, and small safe. Bathrooms are well appointment with a marble sink and gold-plated fixtures. These cabins offer different bed configurations (call for details).



Category OS

Main Deck: Owners Suite #1-2

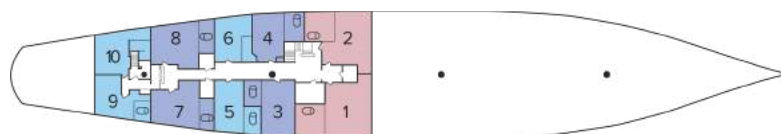
These incomparable suites were occupied by Marjorie Merriweather Post (#1) and E.F. Hutton (#2). They have king-size beds and grand marble bathrooms. They remain a testament to Marjorie Merriweather Post's indulgence in luxury with their large marble baths, fireplaces, overstuffed armchairs, and walk-in closets. Both have portholes, two armchairs, two antique nightstands, antique secretary, decorative marble fireplace, walk-in closet, and small safe.



Deck Plans

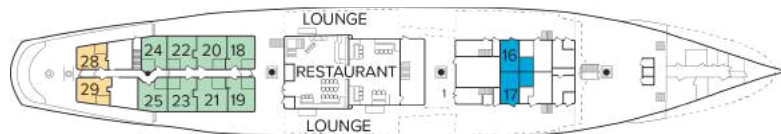
Main Deck

- Category OS
- Category DA
- Category DB



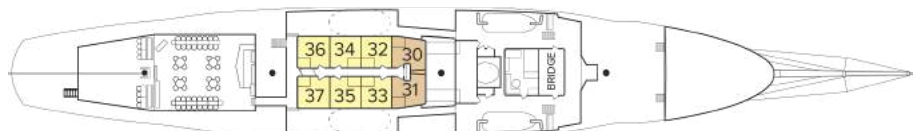
Promenade Deck

- Category 1
- Category 2
- Category A Solo



Lido Deck

- Category 3
- Category 4



Ship amenities

Public Areas

The covered lido bar is a superb place to congregate and enjoy the outdoors. The open-air “Blue Lagoon” is a wonderful place to relax. There is a sumptuous lounge and guests are welcome on the “open bridge” to learn how *Sea Cloud* is navigated and sailed.



Meals

Meals are served in single seatings and in a casual setting and focus on local and Continental cuisine. Wines are included at lunch and dinner. Refreshments are always available.



Cabins

30 outside cabins. All cabins face outside with windows or portholes. Cabins are equipped with a safe, hairdryers, and an outlet for razor. Bathrooms are well appointed with marble sinks and gold-plated fixtures.

Expedition Equipment

Zodiacs make for quick landings and shoreline exploration, and in the Caribbean explore the vibrant undersea by snorkeling.

Special Features

Internet connectivity and laundry services are available. A doctor is available 24 hours a day free of charge. Enjoy black-tie amenities in shorts and deck shoes. While the ship's spaces are suitable for formality, you'll find a certain lighthearted delight in enjoying it in casual dress.



Special Offers

CELEBRATE LIFE'S MILESTONES

Celebrate a milestone with a group of eight or more and enjoy a special amenity package including: 5% savings on voyage fares, custom group photo, US\$150 shipboard credit for the group, and other special gifts. Milestone celebration to be communicated at time of booking. Valid for new bookings only on select departures, subject to availability, not applicable on airfare or extensions, and may not be combined with other offers. Deposit, final payments, and cancellation policies for group travel vary from our regular policies. Call for details.

10% OFF BACK-TO-BACK VOYAGES

Save 10% on consecutive departures, applicable on voyage fares only and not valid on extensions or airfare. Valid for new bookings only, subject to availability, and may not be combined with other offers. Call for details.

SAVE 5% TRAVELING AS A GROUP

Save 5% when traveling as a group of eight or more people. Valid on voyage fares only and not applicable on extensions or airfare. Deposit, final payments, and cancellation policies for group travel vary from our regular policies. Valid for new bookings only, subject to availability, and may not be combined with other offers. Call for details.

COMBINING OFFERS

Certain offers may be combinable, up to two savings opportunities, except where noted otherwise. For example, travel with a group of 8 or more on back-to-back expeditions, and take advantage of both savings.

Included in price

All accommodations aboard ship per itinerary; all meals as indicated in the itinerary, both aboard and onshore; beer, wine, cocktails, and spirits aboard the ship (except certain super premium brands which are available for purchase); hors d'oeuvres, 24-hour access to snacks, premium coffees and teas, non-alcoholic beverages, and filtered water; excursions and airport transfers to and from recommended flights, as indicated in the itinerary; crew gratuities; guidance and company of our leading expedition staff; assistance by the Lindblad Expeditions-National Geographic certified photo instructor; presentations by expedition staff and expert guest speakers; complimentary reusable water bottle; services of a physician, physician's assistant, nurse practitioner, or paramedic; 24-hour access to shared spaces; park and site entrance fees, special access permits, and port taxes. Unused services or items included in our programs are non-refundable.

Not included in price

Airfare (except flights when indicated as included); pre- and post-expedition extensions; additional hotel nights (except when indicated as included); private transfers; laundry, Wi-Fi, and phone services (except when indicated as included); travel protection plans; and passport, visa, and immigration fees.

Travel protection plan

We strongly recommend our guests to take advantage of our Travel Protection Plan. This plan offers comprehensive coverage to protect you from cancellation fees, costs incurred due to trip delays/interruption, damage or loss of baggage, medical assistance, and evacuation during your travels. Our Travel Protection Plan is available for U.S. residents only, and may be purchased any time prior to final payment due date, Travel Protection premiums are non-refundable once plan is purchased. Learn more about our Travel Protection "Plus" Plan: <https://www.expeditions.com/terms-conditions/travel-protection-plan/>

Cancellation policy

Review our cancellation policy: <https://www.expeditions.com/cancellation-policy/>