







South Pacific  
15° 47' S 167° 45' E

## Fiji and Beyond: Rites and Relics of the Pacific

Explore through the heart of Melanesia to the western edge of Polynesia, from the Solomon Islands to Fiji. Receive warm welcomes in the Solomon Islands, Fiji, and Vanuatu. Be greeted with traditional dances when arriving by Zodiac on remote and verdant shores. Search for endemic bird species, snorkel and dive stunning reefs and wrecks, and soak up the tranquil beauty of palm-fringed beaches.

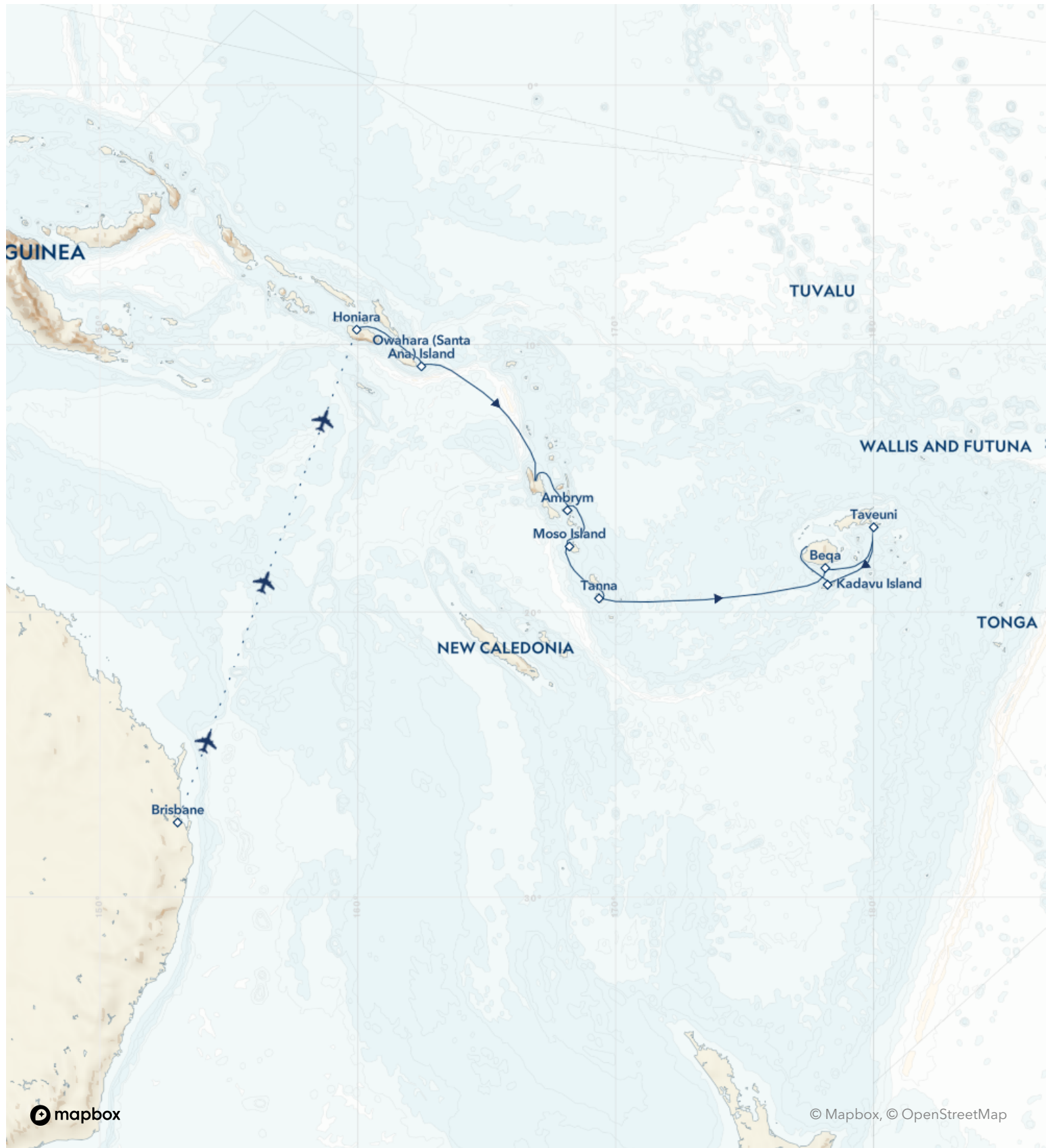
From  
**\$ 11,362** / per person  
Does not include flights

 <b>DATES</b> Jan	 <b>DURATION</b> 13 Days
 <b>SHIPS</b> <i>National Geographic Orion</i>	
 <b>STARTS AT</b> Honiara, Solomon Islands	→  <b>ENDS AT</b> Lautoka, Fiji

## Highlights

- ★ Spot rare and colorful birds and flowers on Fiji's spectacular "Garden Island," Taveuni, and the lovely and less-visited Kadavu
- ★ Swim in the spectacular Matevulu Blue Hole on Vanuatu's Espiritu Santo Island
- ★ Arrive at Owaraha in the Solomon Islands for a series of traditional dances and music, then walk to see the island's traditional spirit houses
- ★ Visit mysterious Ambrym Island in Vanuatu—known as a place of magic and spirits—and witness the traditional Rom dance





## Day by day

### ■ DAY 1

#### Brisbane, Australia

Arrive in Brisbane and transfer to your hotel. Attend a welcome briefing this evening to meet your fellow travelers.

**Arrival Time:** Arrive by 3:00 p.m.

**Arrival City:** Brisbane, Australia

Meals included: dinner

### ◇ DAY 2

#### Brisbane / Honiara, Solomon Islands / Embark Ship

Enjoy breakfast at the hotel before transferring to the airport for a flight to Honiara, a former U.S. supply depot and strategic World War II battleground. Tour around the outskirts of the city to see sites well known from the Battle of Guadalcanal in 1942-1943. See the shores of Red Beach and the vital airbase at Henderson Field. Visit the hills above Honiara, where some of the fiercest battles took place, before embarking the *National Geographic Orion*.

Meals included: dinner, lunch, breakfast

### ◇ DAY 3

#### Owaraha Island

On the tiny isle of Owaraha (formerly known as Santa Ana), you'll be greeted with a traditional dance performed by villagers in elaborate costumes, body paint and masks. Walk across the small island to Nafinotoga to see Spirit Houses containing the skulls and bones of ancient chiefs of the Snake Clan and the Turtle Clan.

Meals included: breakfast, lunch, dinner

### ◇ DAY 4

### At Sea

Take advantage of a full day at sea to settle into the relaxed pace of life on board. Watch for marine life from the deck, study your route on the navigational charts and attend talks by experts.

Meals included: breakfast, lunch, dinner

### ◇ DAY 5

#### Espiritu Santo, Vanuatu

Captain James Cook named the islands of Vanuatu the New Hebrides because they reminded him of the rugged isles off Scotland's coast. On the main island of Espiritu Santo, experience one of the best wreck dives in the world: the *S.S. President Coolidge*, a luxury cruise liner used as a troop carrier during World War II. Experience the Matevulu Blue Hole, a jewel-blue freshwater source surrounded by jungle.

Meals included: breakfast, lunch, dinner

### ◇ DAY 6

#### Ambrym

Ambrym is known for its active volcanoes, black-sand beaches and mystery and magic. Arrive ashore to witness the striking Rom dance, traditionally a secret event. Involving incredible masks and elaborate outfits that represent spirits, this is a cultural experience specific only to this island.

Meals included: breakfast, lunch, dinner

### ◇ DAY 7

#### Moso Island

Arrive on Moso Island to experience some of the most incredible marine life in the South Pacific. There is an exceptional range of pristine soft and

hard corals, reef fish and pelagics. The crystal-clear waters around Havana Harbor reveal colorful corals and an undersea world that is rich with abundant marine life.

Meals included: breakfast, lunch, dinner

◇ DAY 8

## Tanna

On Tanna Island, visit the friendly community in Port Resolution in the shadow of Mount Yasur. Experience some of the local traditions and dances as well as locally made handicrafts.

Meals included: breakfast, lunch, dinner

◇ DAY 9

## At Sea

Relax on deck as the ship makes its passage from Vanuatu to Fiji or attend talks by your expert expedition and photo teams.

Meals included: breakfast, lunch, dinner

◇ DAY 10

## Beqa, Fiji

More than 300 islands make up the remote volcanic archipelago of Fiji, where you'll spend three days exploring. After entering the large lagoon of Beqa, come ashore at the lovely Lawaki Beach House, a rustic resort and beautiful place to spend the day. Take a boat ride and hike across the island to a local village. Taste local fruits and snorkel off the beach in the beautiful Beqa Lagoon. Sample the strong, local kava made for special celebrations.

Meals included: breakfast, lunch, dinner

◇ DAY 11

## Taveuni

Taveuni, Fiji's third largest island, is known as "The Garden Island" for its rich vegetation, which includes

several species found nowhere else in the world. Head inland to discover the waterfalls of Bouma National Heritage Park and search for species such as orange fruit doves, endemic silktails, fantails and parrots. Visit the village of Waitabu to meet the local people, taste locally harvested fruits and prepared baked goods and see a dance performance by some of the local, talented children.

Meals included: breakfast, lunch, dinner

◇ DAY 12

## Kadavu

Join the ship's naturalists for a beautiful scenic hike to see some of the incredible vistas and the rich variety of birdlife on the islands of Kadavu. Snorkel and dive Fiji's Great Astrolabe reef, which is rich in marine life. Enjoy a quiet exploration of the sheltered lagoon by diving, snorkeling, stand-up paddleboarding, kayaking or by glass-bottom Zodiac.

Meals included: breakfast, lunch, dinner

■ DAY 13

## Lautoka, Viti Levu / Disembark Ship

Disembark in Lautoka this morning. Take a tour of western Viti Levu Island then transfer to the international airport at Nadi for flights home, or choose to extend your stay and check into your hotel. Breakfast and lunch are included today; dinner is on your own.

**Departure Time:** Depart after 5:00 p.m.

**Departure City:** Lautoka, Fiji

Meals included: breakfast, lunch

### Eastbound

Honiara, Solomon Islands → Lautoka, Fiji

### 2025 Departure Dates

Aboard *National Geographic Orion*

03 Jan				
--------	--	--	--	--



## ***National Geographic Orion***

---

<b>Guests</b> 102	<b>Cabins</b> 53
----------------------	---------------------

---

Joining the Lindblad fleet in 2013, the state-of-the-art *National Geographic Orion* serves as a luxurious base camp for voyages to the far-flung corners of the planet.

Built in Germany by the Cassens shipyard, the 102-guest *National Geographic Orion* was created with a high-ice class to be able to venture safely into polar regions. A ship of her size is seldom built with such ice-cutting ability, which makes her a rarity. She is yacht-scale, yet rugged enough to venture far afield, making her a perfect addition to the Lindblad fleet, which she joined in 2013. Her size and nimbleness offer the perfect combination of safety and liberty to voyage untrammelled locations. In fact, *National Geographic Orion* currently holds the distinction of having sailed further south than any other Lindblad vessel.

Her menu, created by famed Australian chef, Serge Dansereau, owner of Sydney's acclaimed Bather's Pavilion restaurant, enormously popular with *National Geographic Orion's* guests, so impressed Sven Lindblad, that Serge, a chef-owner who shared the Lindblad commitment to serving local and sustainable food, was enlisted to design the dining program for the entire Lindblad-National Geographic fleet.

*National Geographic Orion* is gracious and intimate, with a rewarding, almost clubby feeling. Of her many amenities and features, the most appealing is her outside deck space which beckons in the balmy reaches of the Pacific, and on those days in Antarctica when the midnight sun and the spectacle of the ice makes going indoors, let alone going to bed, impossible.





# Cabin Categories

## Category 1

**Main Deck:** #316, 318-321

Cabins feature a luminous oval window and configurable beds: two single beds that can be converted to a queen. An armchair, reading lamps, a flat screen TV, two bedside tables, coffee table, desk, and climate controls complete the amenities. Marble bathrooms are generously sized and include a spacious shower stall with a glass door.



## Category 2

**Main Deck:** #302-312, 314, 315, 317

Cabins feature a luminous oval window and configurable beds: two single beds that can be converted to a queen. An armchair, reading lamps, a flat screen TV, bedside table, coffee table, desk, and climate controls complete the amenities. Marble bathrooms are generously sized and include a spacious shower stall with a glass door.



## Category 3

**Upper Deck:** #401-412, 414-419

These suites feature a sitting area with a large window, a sofa—except slightly smaller #401 & #402—an armchair or two, writing/laptop desk, reading lamps, coffee table, flat screen TV, bedside table, & climate controls. Beds are configurable (call for details). Marble bathrooms include a spacious shower stall with a glass door.



## Category 4

**Bridge Deck:** #511, 515

These two suites feature separate sleeping and sitting areas, with a chair and armchair, coffee table, and a two-cushion sofa facing an expansive window. Beds are configurable (call for details). Ample storage, reading lamps, a flat screen TV, and climate controls complete the amenities. Marble bathrooms are generously sized and include a spacious shower stall with a glass door.



## Category 5

**Bridge Deck: #501, 503-506, 508**

These spacious suites feature open living areas and sliding glass doors opening to a shared French balcony. Beds are configurable (call for details). A separate sitting area with armchairs and a sofa, a writing/laptop desk, coffee table, well-placed reading lamps, a flat screen TV, and climate controls complete the decor. Marble bathrooms are generously sized and include a spacious shower stall with a glass door.



## Category 6

**Bridge Deck: #502, 507, 509\*, 510**

These large, elegant suites feature a French balcony, except for #509 which has double windows. Each provides a separate living area with a sofa and two armchairs, coffee table, except for #502, which uniquely offers a 'soaking tub with a view' in addition to a shower stall and expansive vanity. All cabins have reading lamps, a flat screen TV, and climate controls. Marble bathrooms are generously sized and include a spacious shower stall with a glass door.



## Category 1 Solo

**Main Deck: #301, 322, 323**

These solo cabins feature a window or two portholes, a queen-size bed, except for #301 which has a double bed, writing desk and chair, climate controls, reading lamps, coffee table, two bedside tables, and a TV. Marble bathrooms are generously sized and include a roomy shower stall with a glass door.



## Category 3 Solo

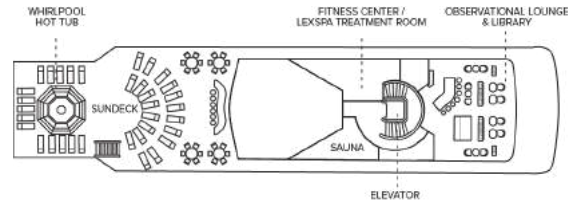
**Upper Deck: #512**

This solo suite features two single beds and two large windows, plus two armchairs and a small table, reading lamps, coffee table a flat screen TV, and climate controls. The marble bathroom is generously sized and includes a spacious shower stall with a glass door.



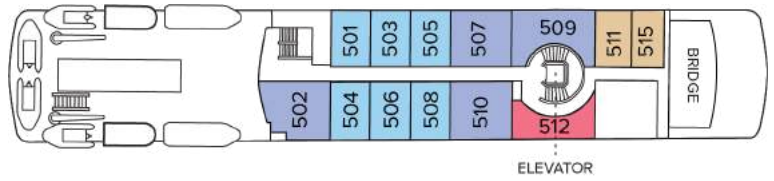
# Deck Plans

## Observation Deck



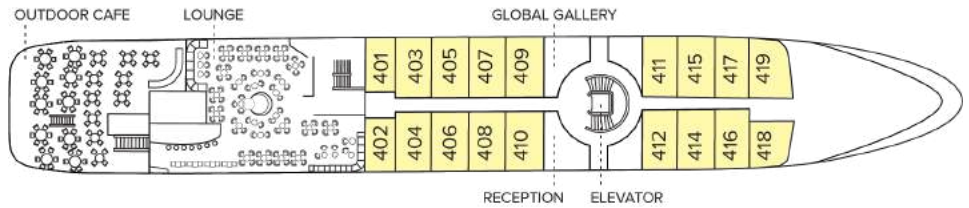
## Bridge Deck

- Category 4
- Category 5
- Category 6
- Category 3 Solo



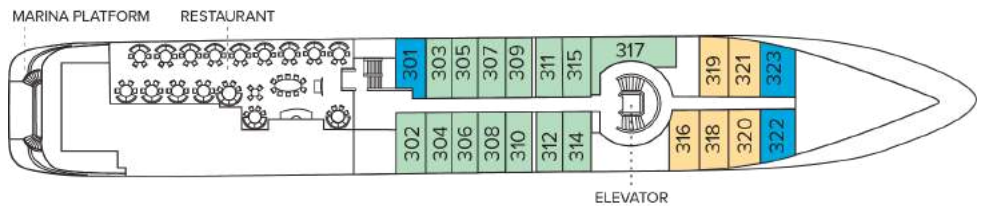
## Upper Deck

- Category 3

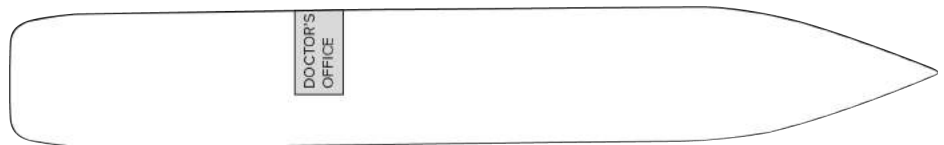


## Main Deck

- Category 1
- Category 2
- Category 1 Solo



## Expedition Deck



# Ship amenities

## Public Areas

Reception; two dining areas; lounge with bar and state-of-the-art presentation facilities; B&H Photo locker; sundeck with a whirlpool hot tub that doubles as a plunge pool in warm climates; observation lounge and library; global gallery; a marina platform; plus open access to the Bridge, the Captain, officers and on-duty wildlife spotters.

## Meals

Meals are served in the dining room, or weather permitting, the outdoor café, at a single seating with unassigned tables for an informal atmosphere and easy mingling. Menus feature sustainable choices, local where possible.

## Cabins

All cabins face outside with windows or portholes, private bathroom, and climate controls. Cabins feature a coffee table, lounge chair, desk, phone, TV with on demand entertainment, multiple outlets and USB, mini refrigerator, and safe. Luxury linens and pillows. Botanically inspired shampoo, conditioner, shower gel, and lotion are all available in cabin bathrooms, as well as an Expedition Essential Kit. Hair dryers, complimentary insulated water bottles and a National Geographic Atlas is available in each cabin.

## Expedition Equipment

Zodiac landing craft, a fleet of double kayaks, a crow's nest camera, a hydrophone, underwater video cameras, video microscope, and an ROV. Plus, for South Pacific voyages: snorkeling gear for all guests, scuba gear for a number of pre-qualified guests, stand-up paddleboards, glass-bottom Zodiac, and splash-cam.

## Special Features

A full-time doctor, undersea specialist, National Geographic photographer, Lindblad-National Geographic certified photo instructor and video chronicler. On all South Pacific voyages, there are a minimum of two dive masters. A central staircase, and elevator reaches all decks. Enjoy teatime, daily. And the smoothies served after the sunrise stretch sessions on the sundeck in Polynesia. Don't miss either opportunity.

## Wellness

A fitness center, LEXspa treatment room and sauna, staffed by wellness specialists.

## Self-Disinfecting Ships

ACT Clean Coat™ is a light-activated, self- disinfecting cleaning process that continuously breaks down viruses, bacteria, mold, and airborne allergens across all ship surfaces. This non-toxic, chemical-free system also helps us save over one million gallons of water each year in our cleaning procedures.

## Special Offers

### GIFT OF EXPLORATION: \$1,000 CREDIT

Book from December 3, 2024 to March 4, 2025. Receive a credit of \$1,000 per person on select departures, deducted from cabin fare prior to any additional applicable savings with the purchase of cabin fare. Valid for new bookings only on select departures, subject to availability, not applicable on airfare or extensions and may not be combined with other offers. Call for details.

### GIFT OF EXPLORATION: 40% SOLO SAVINGS

Book from December 3, 2024, to March 4, 2025. Save 40% on solo cabins on select departures. Solo savings are subject to availability. Other expeditions may be available with a solo saving. Not applicable on airfare or extensions and may not be combined with other offers. A full list of solo savings is available via expeditions.com or call for details.

### GIFT OF EXPLORATION: ADDITIONAL 5% SAVINGS WHEN YOU PAY IN FULL

Book from December 3, 2024, to March 4, 2025. Save an additional 5% on the cabin fare on select departures when you pay in full at time of booking. To qualify for the discount, non-refundable payment in full is due at the time of booking. Valid for new bookings only on select departures, subject to availability, not applicable on airfare or extensions and may not be combined with other offers. Call for details.

### SUITE EXCLUSIVES

Spacious living areas and incredible views immerse you in the beauty of your marine surroundings.

Our new Suite Exclusives package helps make your voyage all the more memorable. [Learn more](#)

### 10% OFF BACK-TO-BACK VOYAGES

Save 10% on consecutive departures, applicable on voyage fares only and not valid on extensions or airfare. Valid for new bookings only, subject to availability, and may not be combined with other offers. Call for details.

### BRINGING THE KIDS

We believe sharing an expedition with children is a life-enhancing experience. Take \$500 off for each child under the age of 18 on any departure. Not applicable on extensions or airfare. Call for details.

### SAVE 5% TRAVELING AS A GROUP

Save 5% when traveling as a group of eight or more people. Valid on voyage fares only and not applicable on extensions or airfare. Deposit, final payments, and cancellation policies for group travel vary from our regular policies. Valid for new bookings only, subject to availability, and may not be combined with other offers. Call for details.

### COMBINING OFFERS

Certain offers may be combinable, up to two savings opportunities, except where noted otherwise. For example, travel with a group of 8 or more on back-to-back expeditions, and take advantage of both savings.

## Included in price

All accommodations aboard ship or in hotels per itinerary; all meals as indicated in the itinerary, both aboard and onshore; beer, wine, cocktails, and spirits aboard the ship (except certain super premium brands which are available for purchase); hors d'oeuvres, 24-hour access to snacks, premium coffees and teas, non-alcoholic beverages, and filtered water; excursions and airport transfers to and from recommended flights, as indicated in the itinerary; crew gratuities; exploration tools curated to destination, such as Zodiacs, stand-up paddleboards, kayaks, snorkeling equipment (including wetsuits, masks, and fins); guidance and company of our leading expedition staff; assistance by the National Geographic Photography Expert and Lindblad Expeditions-National Geographic certified photo instructor; access to the OM System Photo Gear Locker; presentations by expedition staff and expert guest speakers; complimentary reusable water bottle; services of a physician, physician's assistant, nurse practitioner, or paramedic; morning stretch classes and 24-hour access to exercise equipment; 24-hour access to lounges, observation decks, library, and other shared spaces; park and site entrance fees, special access permits, and port taxes. Unused services or items included in our programs are non-refundable.

## Not included in price

Airfare (except flights when indicated as included); pre- and post-expedition extensions; additional hotel nights (except when indicated as included); private transfers; laundry, spa treatments, scuba diving for pre-qualified divers on select voyages\*, Wi-Fi, and phone services (except when indicated as included); travel protection plans; and passport, visa, and immigration fees.

### \*Scuba Diving Requirements

- Dives can be challenging so divers must have ample previous experience
- Divers need at least 25 lifetime dives if you're advanced open water and at least 35 if you're just open water
- Divers need to have a completed an open water dive or professional refresher course within 12 months of the voyage
- Divers need to receive medical clearance to dive from a doctor (form provided upon registration) and provide proof of dive insurance

## Travel protection plan

We strongly recommend our guests to take advantage of our Travel Protection Plan. This plan offers comprehensive coverage to protect you from cancellation fees, costs incurred due to trip delays/interruption, damage or loss of baggage, medical assistance, and evacuation during your travels. Our Travel Protection Plan is available for U.S. residents only, and may be purchased any time prior to final payment due date, Travel Protection premiums are non-refundable once plan is purchased. Learn more about our Travel Protection "Plus" Plan: <https://www.expeditions.com/terms-conditions/travel-protection-plan/>

## Cancellation policy

Review our cancellation policy: <https://www.expeditions.com/cancellation-policy/>