



Sailing the Greek Isles aboard the Sea Cloud Fleet

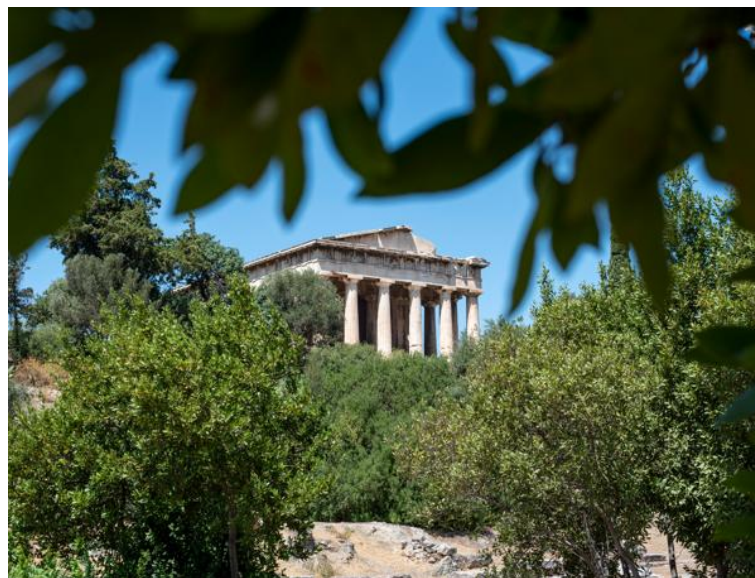
Explore the beautiful Cyclades as the ancients did, sailing from isle to isle under the power of the wind. The legendary tall ship *Sea Cloud*, and her modern counterpart *Sea Cloud II*, offer the chance to stand on deck and watch the orchestrated frenzy of crew members climbing aloft in the rigging to handset 30 sails. Our expedition visits iconic landmarks as well as hidden gems that are largely unknown to all but locals and discerning travelers. Visit small harbors and go on guided walks to learn firsthand about the history and contemporary life along these sun-drenched shores.

From
\$ 15,886 / per person
Does not include flights

	DATES Jun, Aug and Sep		DURATION 8 Days
	SHIPS <i>Sea Cloud</i> <i>Sea Cloud II</i>		
	STARTS AT Piraeus (Athens), Greece	→	 ENDS AT Piraeus (Athens), Greece

Highlights

- ★ Experience the Cyclades while under full sail aboard a romantic tall ship
- ★ On UNESCO World Heritage-listed Delos, the mythological birthplace of twin gods Artemis and Apollo, visit the Temple of Apollo, an important archaeological site
- ★ At Tinos, see the active pilgrimage site of Panagia Evangelistria and terraced hillsides
- ★ Explore the cliffside Panagia Hozoviótissa monastery in Amorgós and ride a cable car down from a clifftop in beautiful Santorini





Day by day

■ DAY 1

Athens, Greece / Piraeus / Embark Ship

Arrive in Athens and transfer to Piraeus, where you will embark the ship in the late afternoon. Settle into your cabin and take in our first Greek sunset at sea.

Arrival Time: Arrive before 4:00 p.m. local time.

Arrival City: Athens, Greece

Meals included: dinner

◇ DAY 2

Sailing the Aegean

Our first morning on board is spent at sea, bound for the Cyclades and reveling in the blue magic of the Aegean horizon from our classic tall ship. Relax on deck with a book or journal. Watch the crew dance across the rigging to trim four masts' worth of sails by hand. Attend interactive discussions led by our team of experts as they introduce the region's history and ecology.

Meals included: breakfast, lunch, dinner

◇ DAY 3

Tinos

Drop anchor at the island of Tinos, a sculptor's haven dotted with villages full of terraced hillsides, Venetian-era dovecotes, and quarries renowned for their superb green marble. Explore the picturesque village of Pyrgos, generously adorned with carved marble facades. And visit the Church of Panagia Evangelistria. Built around a miraculous icon, it's Greece's holiest shrine—and thousands of pilgrims make their way here every year to pray.

Meals included: breakfast, lunch, dinner

◇ DAY 4

Amorgós

The easternmost island of the Cyclades, Amorgós is a bit less frequented than many, but no less impressive. After dropping anchor, take in the beautiful domed churches and windmills of the main city, a scenic enclave perched in the mountains. Explore the Panagia Hozoviótissa monastery, clinging tenaciously to a cliff face above the sea. Like so many others in this region, it was built a millennium ago to protect a precious religious relic.

Meals included: breakfast, lunch, dinner

◇ DAY 5

Santoríni

Venture into remarkable Santoríni—an island archipelago formed from a single volcanic cone that erupted 3,600 years ago to bury the resident Minoan culture in ash. Sail directly into the caldera and then drive through windswept vineyards to reach spectacular high views from the town of Oía. Tour the Archaeology Museum and excavations at Akrotiri, an important Minoan town preserved under volcanic ash like Pompeii, with well-built houses, streets, waterworks, pottery, and art.

Meals included: breakfast, lunch, dinner

◇ DAY 6

Delos / At Sea

Designated a UNESCO site in its entirety, uninhabited Delos is an outstanding archaeological gem. In myth, it's the birthplace of the twin Greek immortals Artemis (goddess of animals and the hunt) and Apollo (god of healing, music, and light). Spend a morning surveying the Terrace of the Lions and exquisite Temple of Apollo, among the many

incredible ruins preserved here. This afternoon, the adventure continues aboard the ship.

Meals included: breakfast, lunch, dinner

◇ DAY 7

Sífnos / At Sea

In the morning, set foot on a rugged island known for its flavors, its beaches, its 227 churches, and its poets. A quaint harbor and scenic upper *chora* (village) invite exploration, and tempting local comestibles can be found at a waterfront taverna. This is also a fine place for a brisk walk or a lazy stroll along the beach. As afternoon arrives, we prepare to hoist our sails once more and depart for Piraeus.

Meals included: breakfast, lunch, dinner

■ DAY 8

Piraeus / Disembark Ship / Athens

Enjoy a farewell breakfast on board before disembarking and transferring to the airport for your flight home—unless you’ve opted for our three-day post-voyage extension in Crete. A two-day pre-voyage extension in Athens is also available, should you want that upfront intro to the region.

Departure Time: Depart after 12:00 p.m. local time.

Departure City: Athens, Greece

Meals included: breakfast

Expedition

Piraeus (Athens), Greece → Piraeus (Athens),
Greece

2024 Departure Dates

Aboard *Sea Cloud*

28 Jun		
31 Aug		
07 Sep		

2025 Departure Dates

Aboard *Sea Cloud II*

30 Aug		
06 Sep	13 Sep	

Aboard *Sea Cloud*

05 Jun	12 Jun	19 Jun	
--------	--------	--------	--



Sea Cloud

Guests

58

Cabins

30

The historic Marjorie Merriweather Post sailing yacht, the latest tall ship in private hands, was built in 1931 and carries 30 sails measuring a total of 32,000 Sq. ft.

Traveling aboard *Sea Cloud*, a historic four-masted barque, is an overall multisensory experience of the rarest kind—and this is true wherever you choose to explore. *Sea Cloud* in the Caribbean is idyllic because little competes with the sensual pleasure of the balmy air and the constant trade winds that invite everyone out on deck. And *Sea Cloud* in the Mediterranean is quintessential because it provides nonstop opportunities to set off from our anchorages or ports—where *Sea Cloud* is invariably the most beautiful ship—to explore the extraordinary beauty and charm of coastal towns and linger among antiquities and sites "sacred" to Western civilization.

The sheer opulence—antique furnishings, marble fireplaces, gold fixtures, exquisite accoutrements—of *Sea Cloud* is a testament to the efforts of the ship's original owners, businesswoman and socialite heiress Marjorie Merriweather Post and finance tycoon E.F. Hutton, who spared no expense in tasteful decoration. Supposedly they never asked the price of a single item while outfitting her.

Whether you're passively watching the athletic young crew scrambling high in the rigging, lolling in what Marjorie Merriweather Post called the "Blue Lagoon," or learning to capture the sun on the sails with your Lindblad-National Geographic certified photo instructor, life aboard *Sea Cloud* is either the point or the perfect interlude between explorations. And remember, another rarity we offer is *Sea Cloud* elegance, enjoyed with Lindblad Expeditions' signature informality—pack your deck shoes and shorts, please!

Return to the golden age of sail aboard this hand-sailed, four-masted ship. Built in 1931 by Wall Street businessman E.F. Hutton for his wife, Marjorie Merriweather Post, *Sea Cloud* carries 30 sails measuring a total of 32,000 square feet.



Cabin Categories

Category 1

Promenade Deck: #28-29

These cabins have two single beds and a large panorama window. Cabin features include telephones, temperature controls, a minibar, closet, dressing table, small safe, and a beautiful bathroom with marble sink and gold-plated fixtures.



Category 2

Promenade Deck: #18-25

These cabins have two single beds, panorama window, dressing table, and efficient bathrooms with showers, marble sink, and gold-plated fixtures. They have telephones, temperature controls, a minibar, and a small safe.



Category 3

Lido Deck: #32-37

These cabins have two single beds (which can be pushed together to make a queen-size bed, with one side against the wall), a writing desk and chair, panorama window, bathrooms with a marble sink, and gold-plated fixtures. They have telephones, temperature controls, a minibar, and a small safe.



Category 4

Lido Deck: #30-31

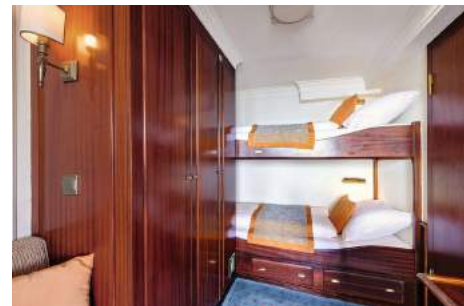
Cabins have a queen-size bed, a forward-facing panorama window and a side-facing window, walk-in closet, a writing desk and chair, and bathrooms with a marble sink, and gold-plated fixtures. They have telephones, temperature controls, a minibar, and a small safe.



Category A Solo

Promenade Deck: #16-17

These solo cabins feature single beds and a window; they once housed the ship's officers. They are equipped with temperature controls and a minibar. Ice is delivered twice daily. Each cabin is equipped with a telephone, small sofa, and small safe. Bathrooms feature marble sinks and gold-plated fixtures.



Category DB

Main Deck: Deluxe B Original and deluxe cabins #5, 6, 9, 10

Located on the Main Deck, these very large cabins, originally occupied by guests (and the nannies, #9-10) of the owner, have a mix of bed types and decorative motifs. All have portholes, one chair, table, two nightstands, dressing table with mirror, walk-in closet and small safe. Bathrooms are well appointed with a marble sink and gold-plated fixtures.



Category DA

Main Deck: Deluxe A Original and deluxe cabins #3, 4, 7, 8

These very spacious cabins, originally occupied by guests of the Posts, have a mix of bed types and decorative motifs. These wood-paneled rooms feature various armchairs, marble fireplaces, and antique furnishings. All have two portholes, two chairs, an antique nightstand, antique secretary, decorative marble fireplace, antique desk, and small safe. Bathrooms are well appointment with a marble sink and gold-plated fixtures. These cabins offer different bed configurations (call for details).



Category OS

Main Deck: Owners Suite #1-2

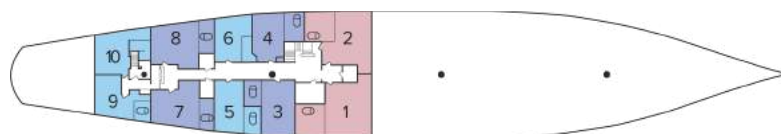
These incomparable suites were occupied by Marjorie Merriweather Post (#1) and E.F. Hutton (#2). They have king-size beds and grand marble bathrooms. They remain a testament to Marjorie Merriweather Post's indulgence in luxury with their large marble baths, fireplaces, overstuffed armchairs, and walk-in closets. Both have portholes, two armchairs, two antique nightstands, antique secretary, decorative marble fireplace, walk-in closet, and small safe.



Deck Plans

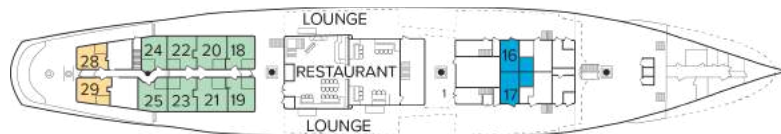
Main Deck

- Category OS
- Category DA
- Category DB



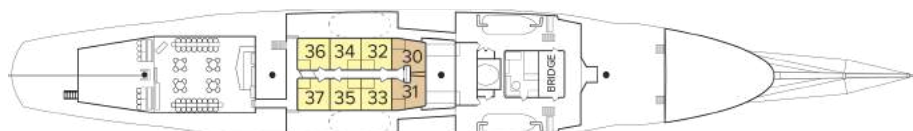
Promenade Deck

- Category 1
- Category 2
- Category A Solo



Lido Deck

- Category 3
- Category 4



Ship amenities

Public Areas

The covered lido bar is a superb place to congregate and enjoy the outdoors. The open-air “Blue Lagoon” is a wonderful place to relax. There is a sumptuous lounge and guests are welcome on the “open bridge” to learn how *Sea Cloud* is navigated and sailed.



Meals

Meals are served in single seatings and in a casual setting and focus on local and Continental cuisine. Wines are included at lunch and dinner. Refreshments are always available.



Cabins

30 outside cabins. All cabins face outside with windows or portholes. Cabins are equipped with a safe, hairdryers, and an outlet for razor. Bathrooms are well appointed with marble sinks and gold-plated fixtures.

Expedition Equipment

Zodiacs make for quick landings and shoreline exploration, and in the Caribbean explore the vibrant undersea by snorkeling.

Special Features

Internet connectivity and laundry services are available. A doctor is available 24 hours a day free of charge. Enjoy black-tie amenities in shorts and deck shoes. While the ship's spaces are suitable for formality, you'll find a certain lighthearted delight in enjoying it in casual dress.





Sea Cloud II

Guests

88

Cabins

44

Sail in style aboard a unique vessel that's a perfect combination of nostalgic elegance and modern comfort

Sea Cloud II is an alluring sailing vessel perfectly suited to travel the scenic shores of Italy and Croatia, exploring little-seen archipelagos and anchoring in small coves. A romantic tall ship with every modern comfort, Sea Cloud II combines the spaciousness and welcome amenities of a contemporary vessel with the grace and elegance of a square rigger. Inspired by the legendary 1930s yacht Sea Cloud, Sea Cloud II embodies the Golden Age of Sail; yet, it is modernly built, reflecting today's standards of luxury. From marble bathrooms and elegant furnishings to televisions and climate controls, comfortable cabins have expected amenities.

Expansive outdoor decks and viewing areas provide ideal vantage points for appreciating the scenery of the Mediterranean and the Adriatic, and for savoring the romance of being under sail. Al fresco dining—accompanied by a pianist—is offered on the Lido Deck where shorts and deck shoes are the norm. While the ship's indoor spaces, like a sizeable dining room and lounge, are suitable for formality, there's a lighthearted delight in enjoying them in casual dress. Guests can also take advantage of the spa that offers a sauna, fitness area, and massage therapy.

Expect the hallmarks of a Lindblad Expeditions-National Geographic voyage, including expert field staff like historians and certified photo instructors (CPIs); top-quality dining that includes locally sourced ingredients and regional specialties; evening Recaps that review the day and set the stage for the next; experienced service; and an open Bridge policy that invites guests to observe the workings of a ship under sail.



Cabin Categories

Category 1S

Cabin Deck: #207-210

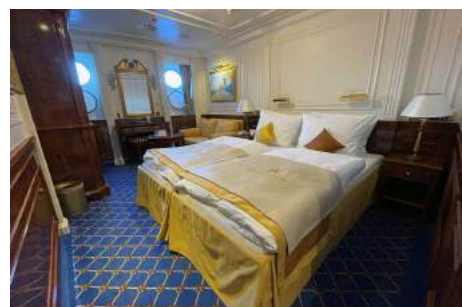
These 236 sq. ft. outside-facing cabins, located on the Cabin Deck, have a double bed (which can be separated into two single beds for cabin share program) and two portholes. Cabin features include a couch, television, small table, dressing table with mirror, a closet, two nightstands, minibar, safe, temperature controls, and telephone. The beautiful marble bathroom is equipped with a shower.



Category 1

Cabin Deck: #207-210

These 236 sq. ft. outside-facing cabins, located on the Cabin Deck, have a double bed (which can be separated into two single beds) and two portholes. Cabin features include a couch, television, small table, dressing table with mirror, a closet, two nightstands, minibar, safe, temperature controls, and telephone. The beautiful marble bathroom is equipped with a shower. Note: Solo occupancy cabins are available in Category 1.



Category 2

Cabin Deck: #211-212, 214-217, 224-231

These 247 sq. ft. outside-facing cabins, located on the Cabin Deck, have a double bed (which can be separated into two single beds) and two portholes. Cabin features include a couch, television, small table, dressing table with mirror, a closet, two nightstands, minibar, safe, temperature controls, and telephone. The beautiful marble bathroom is equipped with a shower. Note: Some Category 2 cabins have connecting doors.



Category 3

Cabin Deck: #218-223

These 258 sq. ft. outside-facing cabins, located on the Cabin Deck, have a double bed (which can be separated into two single beds) and three portholes. Cabin features include two chairs, a small table, television, dressing table with mirror, writing desk, two closets, two nightstands, minibar, safe, temperature controls, and telephone. The beautiful marble bathroom is equipped with a shower.



Category 4

Promenade Deck: #301, 302

These 249 sq. ft. outside-facing cabins, located on the Promenade Deck, have a double bed (which can be separated into two single beds) and three large panorama windows. Cabin features include two chairs, a small table, television, writing desk/dressing table with mirror, closets, two nightstands, minibar, safe, temperature controls, and telephone. The beautiful marble bathroom is equipped with a shower.



Category 5

Promenade Deck: #303, 304

These outside-facing suites, located on the Promenade Deck, have a double bed (which can be separated into two single beds) and three large panorama windows. #303 is 271 sq. ft. and #304 is 265 sq. ft. Suite features include an electric fireplace, separate sitting area with two large chairs and large table, walk-in closet, television, dressing table with mirror, two nightstands, minibar, safe, temperature controls, and telephone. The beautiful marble and gold-fitted bathroom is equipped with shower bathtub and marble washbasin.



Category 6

Promenade Deck: #305-312, 314-319

These 281 sq. ft. outside-facing suites, located on the Promenade Deck, have a double bed (which can be separated into two single beds) and three large panorama windows. Suite features include an electric fireplace, separate sitting area with two large chairs and large table, walk-in closet, television, dressing table with mirror, two nightstands, minibar, safe, temperature controls, and telephone. The beautiful marble and gold-fitted bathroom is equipped with shower bathtub and marble washbasin.



Category 7

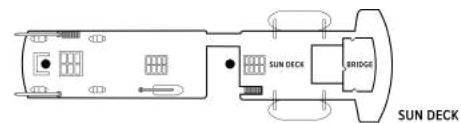
Lido Deck: #401, 402

These 335 sq. ft. outside-facing suites, located on the Lido Deck, have a double four-poster bed and four large panorama windows. Cabin features include an electric fireplace, separate sitting area with a couch, two large chairs and large table, walk-in closet with four large wardrobes, television, dressing table with mirror, two nightstands, minibar, safe, temperature controls, and telephone. The large, beautiful marble and gold-fitted bathroom is equipped with separate shower and bathtub, and marble washbasin.



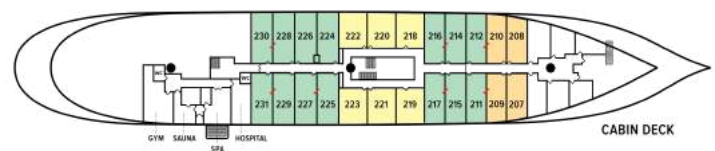
Deck Plans

Sun Deck



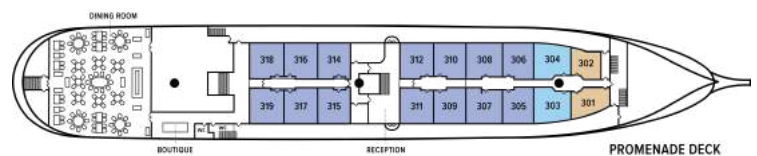
Cabin Deck

- Category 1S
- Category 1
- Category 2
- Category 3



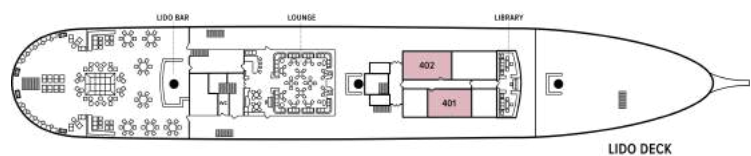
Promenade Deck

- Category 4
- Category 5
- Category 6



Lido Deck

- Category 7



Ship amenities

Well-Appointed Cabins

All cabins are outside-facing and have portholes or windows, a marble bathroom, minibar, ample storage space, and period furnishings. Some include special features like a separate sitting area, walk-in dressing area, canopy bed, or electric fireplace.

The Thrill of Being Under Sail

A three-masted barque with 23 sails, Sea Cloud II is sailed by hand as often as conditions permit, starting with a full description of the sailing process the first morning on board and then as much as possible during the voyage. This tradition carried out by a skilled crew is an art form that contributes to the romance of being at sea.



Welcome Wellness Amenities

Unwind in the spa with a sauna or massage. A fitness room includes a treadmill, stationary bicycle, rowing machine, elliptical trainer, and weights.

A Choice of Indoor Public Spaces

An elegant lounge is a perfect venue for a nightly cocktail while the light-filled library is a lovely spot to sit down with a book about the region. Guests are welcome on the Bridge (conditions permitting) to learn how Sea Cloud II is navigated and sailed.



Inviting Outdoor Spaces

Outdoor spaces like the Lido and Promenade Decks invite relaxation in the open air. Feel the balmy breezes as idyllic scenery passes. Stretch out in a recliner and enjoy the ease of travel under sail; or enjoy a refreshment under the shade of a canopy.

Quality Dining

Dinners are served in single seating in the spacious restaurant, where breakfasts are also served buffet style, with eggs to order. Lunches, afternoon tea, and some special meals are more "at leisure" on the Lido Deck. All food and drink on board focus on Continental cuisine and local specialties.

Noteworthy Features

The ship's interiors have the nostalgic feel of a luxurious 1930s yacht but boast contemporary features such as a helpful reception desk, wide passageways, and a central staircase. During your voyage, we will cover your bar tab aboard the ship (excluding certain super-premium brands).

Special Offers

CELEBRATE LIFE'S MILESTONES

Celebrate a milestone with a group of eight or more and enjoy a special amenity package including: 5% savings on voyage fares, custom group photo, US\$150 shipboard credit for the group, and other special gifts. Milestone celebration to be communicated at time of booking. Valid for new bookings only on select departures, subject to availability, not applicable on airfare or extensions, and may not be combined with other offers. Deposit, final payments, and cancellation policies for group travel vary from our regular policies. Call for details.

10% OFF BACK-TO-BACK VOYAGES

Save 10% on consecutive departures, applicable on voyage fares only and not valid on extensions or airfare. Valid for new bookings only, subject to availability, and may not be combined with other offers. Call for details.

SAVE 5% TRAVELING AS A GROUP

Save 5% when traveling as a group of eight or more people. Valid on voyage fares only and not applicable on extensions or airfare. Deposit, final payments, and cancellation policies for group travel vary from our regular policies. Valid for new bookings only, subject to availability, and may not be combined with other offers. Call for details.

COMBINING OFFERS

Certain offers may be combinable, up to two savings opportunities, except where noted otherwise. For example, travel with a group of 8 or more on back-to-back expeditions, and take advantage of both savings.

Included in price

All accommodations aboard ship per itinerary; all meals as indicated in the itinerary, both aboard and onshore; beer, wine, cocktails, and spirits aboard the ship (except certain super premium brands which are available for purchase); hors d'oeuvres, 24-hour access to snacks, premium coffees and teas, non-alcoholic beverages, and filtered water; excursions and airport transfers to and from recommended flights, as indicated in the itinerary; crew gratuities; guidance and company of our leading expedition staff; assistance by the Lindblad Expeditions-National Geographic certified photo instructor; presentations by expedition staff and expert guest speakers; complimentary reusable water bottle; services of a physician, physician's assistant, nurse practitioner, or paramedic; 24-hour access to exercise equipment (where available); 24-hour access to shared spaces; park and site entrance fees, special access permits, and port taxes. Unused services or items included in our programs are non-refundable.

Not included in price

Airfare (except flights when indicated as included); pre- and post-expedition extensions; additional hotel nights (except when indicated as included); private transfers; laundry, Wi-Fi, and phone services (except when indicated as included); travel protection plans; and passport, visa, and immigration fees.

Travel protection plan

We strongly recommend our guests to take advantage of our Travel Protection Plan. This plan offers comprehensive coverage to protect you from cancellation fees, costs incurred due to trip delays/interruption, damage or loss of baggage, medical assistance, and evacuation during your travels. Our Travel Protection Plan is available for U.S. residents only, and may be purchased any time prior to final payment due date, Travel Protection premiums are non-refundable once plan is purchased. Learn more about our Travel Protection "Plus" Plan: <https://www.expeditions.com/terms-conditions/travel-protection-plan/>

Cancellation policy

Review our cancellation policy: <https://www.expeditions.com/cancellation-policy/>