



Galápagos, Peru & South America  
13° 9' S 72° 32' W

## Wild Galápagos and Peru Escape

Discover two iconic world wonders in 11 action-filled days. Starting in Lima, fly to Cusco and journey to the Sacred Valley and fabled Machu Picchu. Then venture to Darwin's Galápagos Islands to encounter unique wildlife and landscapes on shore and under the sea. Sail aboard the newest member of our fleet, *National Geographic Islander II*. With just 26 staterooms and suites, this elegant ship feels like a private yacht.

From

**\$ 8,986** / per person  
Does not include flights



### DATES

Year round



### DURATION

11 Days



### SHIPS

*National Geographic Islander II*



### STARTS AT

Lima, Peru



### ENDS AT

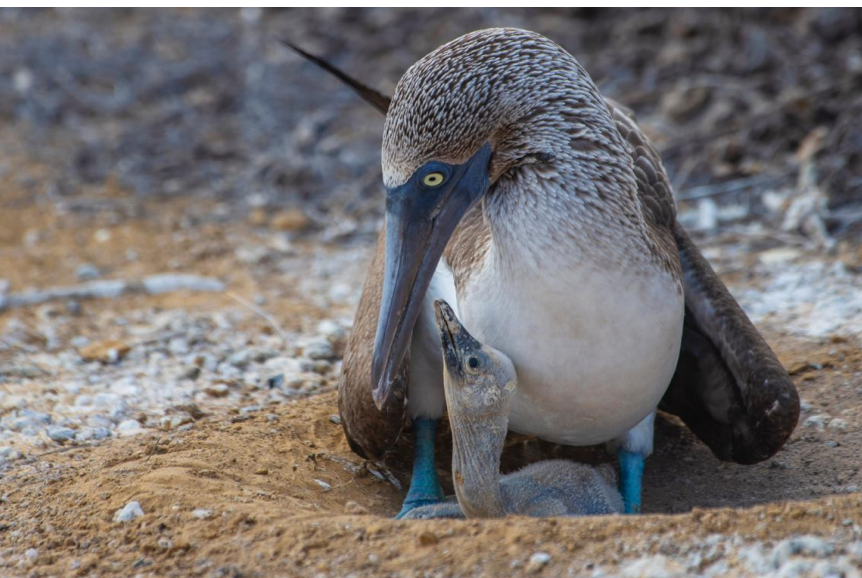
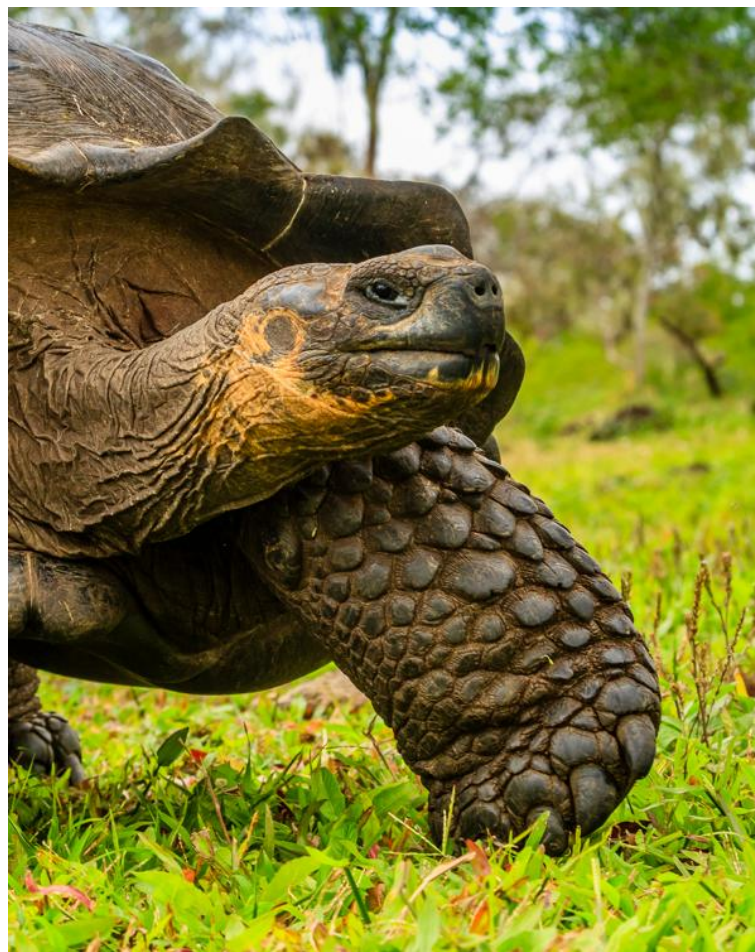
Quito or  
Guayaquil,  
Ecuador

**NOTE:** Passport information to secure Machu Picchu tickets is needed at time of booking due to an increase in demand. Bookings within 60 days are subject to confirmation of availability.



## Highlights

- ★ Soak in the scenery and culture of the Sacred Valley of the Inca
- ★ Journey between Ollantaytambo and Machu Picchu by Inca Rail
- ★ Remain into the late afternoon at fabled Machu Picchu, introduced to the world by Hiram Bingham in the April 1913 issue of *National Geographic* magazine
- ★ Maximize your time in Galápagos with options to hike, Zodiac cruise, and snorkel every day







## Day by day

### ■ DAY 1

#### Lima, Peru

Arrive in Lima, Peru's thriving capital, and transfer to the convenient Wyndham Costa del Sol, connected to the airport. Most international flights arrive in the late evening. Opt to arrive early for [a Lima pre-voyage extension](#) staying at the iconic Country Club Lima Hotel. The extension adds just a day to the expedition and gives you a chance to rest, relax, and see this UNESCO World Heritage designated city.

**Arrival Time:** Anytime.

**Arrival City:** Lima, Peru

### ◇ DAY 2

#### Lima / Cusco / Sacred Valley

Fly to Cusco this morning. Drive through the Sacred Valley to Chinchero, a typical Andean village where National Geographic Grantee Nilda Callañaupa joins us for lunch and a demonstration of Inca weaving traditions. Continue to Tambo del Inka, where we stay two nights. Dinner tonight is at the hotel.

**Meals included:** breakfast, lunch, dinner

### ◇ DAY 3

#### Machu Picchu

Drive to Ollantaytambo, where we board our train to Machu Picchu. Perched at nearly 8,000 feet in the "eyebrow of the jungle," the sanctuary is surrounded by tropical mountain forest with diverse birds and orchids. We linger after daytime visitors have departed, returning to Machu Picchu Pueblo for the train ride back to the Sacred Valley and Tambo del Inka this evening. Dinner is served aboard the first-class train.

**Meals included:** breakfast, lunch, dinner

### ◇ DAY 4

#### Sacred Valley / Cusco

After breakfast this morning, depart for Cusco with a full day to explore. Tour the ornate 17th-century cathedral and Plaza de Armas, the sacred Inca Temple of the Sun and other treasures of this burgeoning cultural capital and center of the Inca universe, where colonial buildings stand atop Inca foundations. Check in at Palacio del Inka in the historic center. Dinner is on your own tonight to explore nearby celebrated restaurants or rest and relax at the hotel.

**Meals included:** breakfast, lunch

### ◇ DAY 5

#### Cusco / Lima / Guayaquil, Ecuador

Bid farewell to Peru and continue to Ecuador for the second part of our expedition with flights from Cusco via Lima to Guayaquil, Ecuador's largest city. Overnight at Hotel del Parque.

**Meals included:** breakfast, lunch, dinner

### ◇ DAYS 6-9

#### Guayaquil / Baltra / Embark Ship

Fly on Day 6 to Galápagos. Each day here we hike, swim, snorkel, or explore by kayak or Zodiac—all the while witnessing incredible interactions between animals in their natural habitat. Start exploring on Isla Santa Cruz with a trip over the highlands of Santa Cruz upon arrival. Over these few days, walk in a cactus forest with endemic land iguanas on Santa Fé. Wander among sea lions and admire soaring sea birds on Plaza Sur. Search for penguins on stark black lava at Sullivan Bay on Santiago. Snorkel in crystal-clear water at Sombrero Chino.

And sail across the Equator and into the flooded caldera at Genovesa, a seabird paradise where we bid farewell to Darwin's Islands.

Meals included: breakfast, lunch, dinner

◇ DAY 10

## Baltra / Disembark Ship / Guayaquil or Quito

Disembark this morning for a return flight to the mainland, where we transfer to Hotel del Parque in Guayaquil. In Quito there are [several hotel options](#). The afternoon and evening are at your leisure. You may be able to take advantage of overnight flights home. Ask your expedition specialist about joining a culturally rich [post-voyage extension to Quito and Otavalo](#), a celebrated market town.

Meals included: breakfast

■ DAY 11

## Guayaquil or Quito

After breakfast, transfer to the airport and board flights home, unless you have arranged for additional nights or an extension.

**Departure Time:** Anytime on day 11, or after 7:00 p.m. local time on day 10.

**Departure City:** Guayaquil or Quito, Ecuador

### Expedition

Lima, Peru → Quito or Guayaquil, Ecuador

### 2024 Departure Dates

Aboard *National Geographic Islander II*

10 May	24 May		
07 Jun	21 Jun		
05 Jul	19 Jul		
02 Aug	16 Aug	30 Aug	
13 Sep	27 Sep		
11 Oct	25 Oct		
08 Nov	22 Nov		
06 Dec			

### 2025 Departure Dates

Aboard *National Geographic Islander II*

03 Jan	17 Jan	31 Jan	
14 Feb	28 Feb		
14 Mar	28 Mar		
11 Apr	25 Apr		
09 May	23 May		
06 Jun	20 Jun		
04 Jul	18 Jul		
01 Aug	15 Aug		
26 Sep			
10 Oct			
07 Nov	21 Nov		
05 Dec			

### 2026 Departure Dates

Aboard *National Geographic Islander II*

02 Jan	16 Jan	30 Jan	
13 Feb	27 Feb		
13 Mar	27 Mar		



## ***National Geographic Islander II***

---

**Guests**

**48**

**Suites**

**26**

---

### **A New Ship with Just 26 Spacious Staterooms and Suites Sailing the Galápagos Islands**

Lindblad Expeditions is thrilled to welcome the National Geographic Islander II to our fleet. Sleek and elegant, she will sail year-round in the Galápagos Islands and elevate the guest experience to an entirely new level.

National Geographic Islander II is a gracious expedition vessel that feels like a private yacht. With only 26 staterooms and suites, and accommodating just 48 guests, she sails with a 1:1 guest-to-crew ratio.

Special features include teak decks, indoor-outdoor dining options, an impressive observation deck, and new amenities like a climate-controlled Marina and a dedicated Science Hub.

National Geographic *Islander II* provides an authentic sense of place, drawing on our decades of partnering with local communities and conservation groups. Contributing to the fully immersive Ecuadorian experience on board are Ecuadorian staff and locally sourced and sustainable farm-to-table and ocean-to-table culinary ingredients, as well as artisan spa elements and handcrafted textiles, art, and décor all regionally created.

### **An authentic, immersive experience in the Galàpagos**

The *National Geographic Islander II* celebrates Lindblad's deep connection to the islands, Ecuador, and its people with a deeply immersive and truly unique Ecuadorian cultural experience. The carefully considered food and beverage program highlights the four regions of Ecuador with locally sourced farm-to-table ingredients. Regional ingredients can even be found in spa products. From Ecuadorian shipboard staff to artwork, textiles, and décor created by local artists and artisans and Ecuadorean music heard throughout the ship, guests will experience the beauty and wonder of Ecuador both on and off the ship.





# Cabin Categories     Bridge Deck

## Category SU

**Guest Suite:** #301, 302, 306, 308, 310, 311, 312, 316

280 sq. ft. with two panoramic windows, twin/king convertible beds, seating area with sofa, lounge chair, and marble double-sink bathrooms with rain shower. #301, 302, 306, 308, 310-312, 316. #312 & #316 are triple occupancy with sofa made up as third bed. Third person rates are one-half the double occupancy rate. Connecting Suites: #301/303, 302/306



## Category SO

**Solo Suite:** #315, 318.

280 sq. ft. with two panoramic windows, twin/king convertible beds, seating area with sofa, lounge chair, and marble double-sink bathrooms with rain shower; dedicated solo but otherwise identical to SU category.



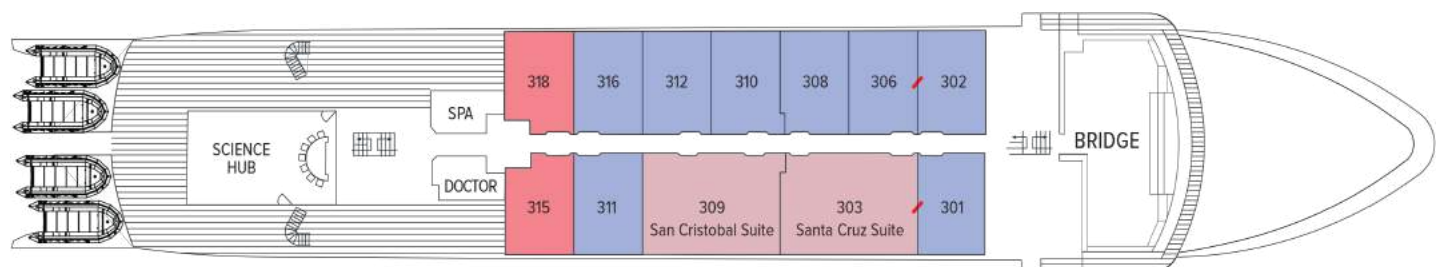
## Category IS

**Islander Suite:** #303, 309

515 sq. ft. with two panoramic windows, twin/king convertible beds, separate living areas with sofa, table and chairs, two lounge chairs, larger bathroom with both rain shower and tub. Triple occupancy with sofa made up as third bed. Third person rates are one-half the double occupancy rate. Connecting Suites: #301/303, 302/306



## Bridge Deck



# Cabin Categories     Main Deck

## Category IS

**Islander Suite: #209, 218**

515 sq. ft. with two panoramic windows, twin/king convertible beds, separate living areas with sofa, table and chairs, two lounge chairs, larger bathroom with both rain shower and tub. Triple occupancy with sofa made up as third bed. Third person rates are one-half the double occupancy rate.



## Category SU

**Guest Suite: #205/207**

280 sq. ft. with two panoramic windows, twin/king convertible beds, seating area with sofa, lounge chair, and marble double-sink bathrooms with rain shower. #203, 205-208, 210-212, 215, 220. Connecting Suites:



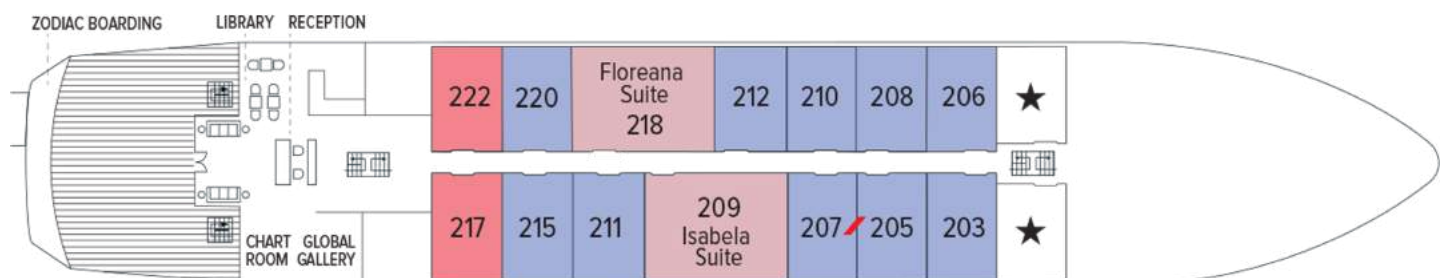
## Category SO

**Solo Suite: #217, 222**

280 sq. ft. with two panoramic windows, twin/king convertible beds, seating area with sofa, lounge chair, and marble double-sink bathrooms with rain shower; dedicated solo but otherwise identical to SU category.

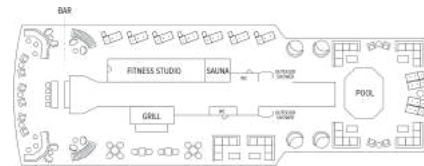


## Main Deck

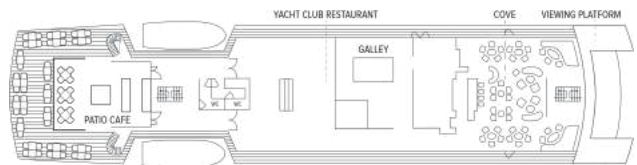


# Deck Plans

## Observation Deck

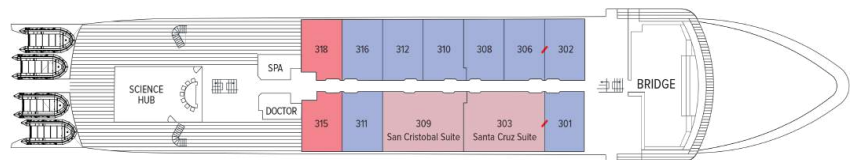


## Promenade Deck



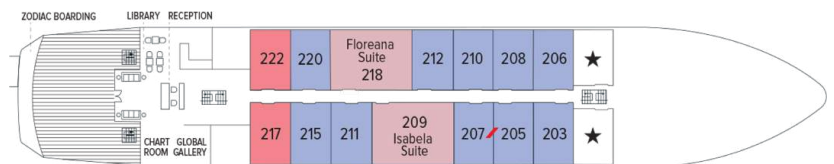
## Bridge Deck

- Category SU
- Category SO
- Category IS



## Main Deck

- Category IS
- Category SU
- Category SO



## Marina Deck





# Ship amenities

## Indoor-Outdoor Dining

Enjoy meals in the expanded al fresco Patio Café, sophisticated Yacht Club Restaurant on the Promenade Deck, or Grill on the Observation Deck, where there's also a bar and ample seating to host events. Here, guests gather for wine tastings, chocolate tastings, and Bubble-Qs—BBQs made extra celebratory with Champagne. The convenient 24-hour beverage and snack stations in the Bar and Library are other welcome amenities.



## Science Hub

Outfitted with scientific equipment, the exciting new Science Hub continues the Lindblad Expeditions-National Geographic legacy of supporting conservation and research. Equipped for underway oceanography, interactive video presentations, and an enhanced photo experience, the Science Hub is also a place for young guests in the [National Geographic Global Explorers Program](#) to experience hands-on learning.

## Public Spaces

The ship's public spaces enhance the connection to the islands. Guests will find an open Bridge, surrounding teak decks, and a forward-viewing area. Two dining areas accommodate all guests in a single seating. The Cove, which has a bar, is the setting for daily Recaps. Other ship features include a Reception area with glass doors that lead to an open teak Viewing Deck, a Plunge Pool, a Chart Room, the Global Gallery, Library, Marina, Swim Platform, and Zodiac boarding area.



## Expedition Tools

National Geographic Islander II carries a fleet of kayaks and stand-up paddleboards, a glass-bottom boat, an expanded flotilla of versatile Zodiacs, complete snorkel gear for adults and children, video microscope, and Science Hub.

The newly refitted teak-appointed marina is spacious and climate-controlled, designed for guests to comfortably get in and out of expedition gear.



## Expanded Expedition Staff

The Expedition Team, led by a veteran Expedition Leader, includes a five Naturalists, Undersea Specialist, Certified Photo Instructor, and Certified Field Educators who run our exclusive [National Geographic Global Explorers Program](#) for kids and teens.

# Special Offers

## ROUND-TRIP GALÁPAGOS AIR INCLUDED UP TO \$1,400

Book between April 18 and May 9, 2024. Airfare included up to a ticket value of \$1,400 per person when booking a select departure of National Geographic Islander II or National Geographic Endeavour II on select Galápagos Expeditions. To qualify for the offer, a non-refundable deposit in the amount of 25% (twenty five percent) of your booking is due at the time of booking. Standard cancellation terms will not apply. Air Included Air Offer must be communicated at time of booking by quoting "AIR INCLUDED". To qualify for the offer, airfare must be ticketed by Lindblad Expeditions. In the case that airfare at the time of booking is higher than \$1,400 per person, guest will be required to pay any amount in excess of \$1,400 per person. Includes internal flights between mainland Ecuador, Galápagos, and Peru (depending on itinerary). Offer is valid for new bookings only, subject to availability, may not be combined with other offers, and is applicable on extensions. Baggage fees may incur additional costs and seat assignments may not be guaranteed. Call for details.

## COMPLIMENTARY TRANSFERS

We include arrival and departure airport transfers for all guests in Ecuador and Peru, whether by group, hotel shuttle, or private transfer (please share your flight information two weeks before your departure). In addition, we provide transfers for guests who are booked on ticketed internal flights from Guayaquil, Quito, or Lima to and from the Galapagos, Cusco or Iquitos.

## SUITE EXCLUSIVES

Spacious living areas and incredible views immerse you in the beauty of your marine surroundings. Our new Suite Exclusives package helps make your voyage all the more memorable. [Learn more](#)

## CELEBRATE LIFE'S MILESTONES

Celebrate a milestone with a group of eight or more and enjoy a special amenity package including: 5% savings on voyage fares, custom group photo, US\$150 shipboard credit for the group, and other special gifts. Milestone celebration to be communicated at time of booking. Valid for new bookings only on select departures, subject to availability, not applicable on airfare or extensions, and may not be combined with other offers. Deposit, final payments, and cancellation policies for group travel vary from our regular policies. Call for details.

## 10% OFF BACK-TO-BACK VOYAGES

Save 10% on consecutive departures, applicable on voyage fares only and not valid on extensions or airfare. Valid for new bookings only, subject to availability, and may not be combined with other offers. Call for details.

## BRINGING THE KIDS

We believe sharing an expedition with children is a life-enhancing experience. Take \$500 off for each child under the age of 18 on any departure. Not applicable on extensions or airfare. Call for details.

## SAVE 5% TRAVELING AS A GROUP

Save 5% when traveling as a group of eight or more people. Valid on voyage fares only and not applicable on extensions or airfare. Deposit, final payments, and cancellation policies for group travel vary from our regular policies. Valid for new bookings only, subject

to availability, and may not be combined with other offers. Call for details.

---

## COMBINING OFFERS

Certain offers may be combinable, up to two savings opportunities, except where noted otherwise.

For example, travel with a group of 8 or more on back-to-back expeditions, and take advantage of both savings.



## Included in price

All accommodations aboard ship or in hotels per itinerary; all meals as indicated in the itinerary, both aboard and onshore; beer, wine, cocktails, and spirits aboard the ship (except certain super premium brands which are available for purchase); hors d'oeuvres, 24-hour access to snacks, premium coffees and teas, non-alcoholic beverages, and filtered water; excursions and airport transfers to and from recommended flights, as indicated in the itinerary; exploration tools curated to destination, such as Zodiacs, stand-up paddleboards, kayaks, snorkeling equipment (including wetsuits, masks, and fins); guidance and company of our leading expedition staff; assistance by the Lindblad Expeditions-National Geographic Certified Photo Instructor; presentations by expedition staff and expert guest speakers; one hour of Wi-Fi per person per day aboard ship; complimentary reusable water bottle; services of a physician; morning stretch classes and 24-hour access to exercise equipment; 24-hour access to lounges, observation decks, library, and other shared spaces; park and site entrance fees, special access permits, and port taxes. Unused services or items included in our programs are non-refundable.

## Not included in price

Airfare (except flights when indicated as included); pre- and post-expedition extensions; additional hotel nights (except when indicated as included); crew gratuities; private transfers; laundry, spa treatments, and phone services (except when indicated as included); travel protection plans; and passport, visa, and immigration fees.

## Travel protection plan

We strongly recommend our guests to take advantage of our Travel Protection Plan. This plan offers comprehensive coverage to protect you from cancellation fees, costs incurred due to trip delays/interruption, damage or loss of baggage, medical assistance, and evacuation during your travels. Our Travel Protection Plan is available for U.S. residents only, and may be purchased any time prior to final payment due date, Travel Protection premiums are non-refundable once plan is purchased. Learn more about our Travel Protection "Plus" Plan: <https://www.expeditions.com/terms-conditions/travel-protection-plan/>

## Cancellation policy

Review our cancellation policy: <https://www.expeditions.com/cancellation-policy/>