







# Galápagos by Catamaran: An Intimate Voyage

Zodiac to pristine beaches, kayak, or stand-up paddleboard along volcanic shores, explore wildlife on land or under the sea. Experience the Galápagos aboard a stylish and stable double-hulled yacht for 16 guests, well-equipped for up-close exploration. See and do more with two veteran naturalists, including a National Geographic certified photo instructor. *National Geographic Delfina* is available as a private charter. The ship is perfectly sized for a group of family and friends, or your organization.

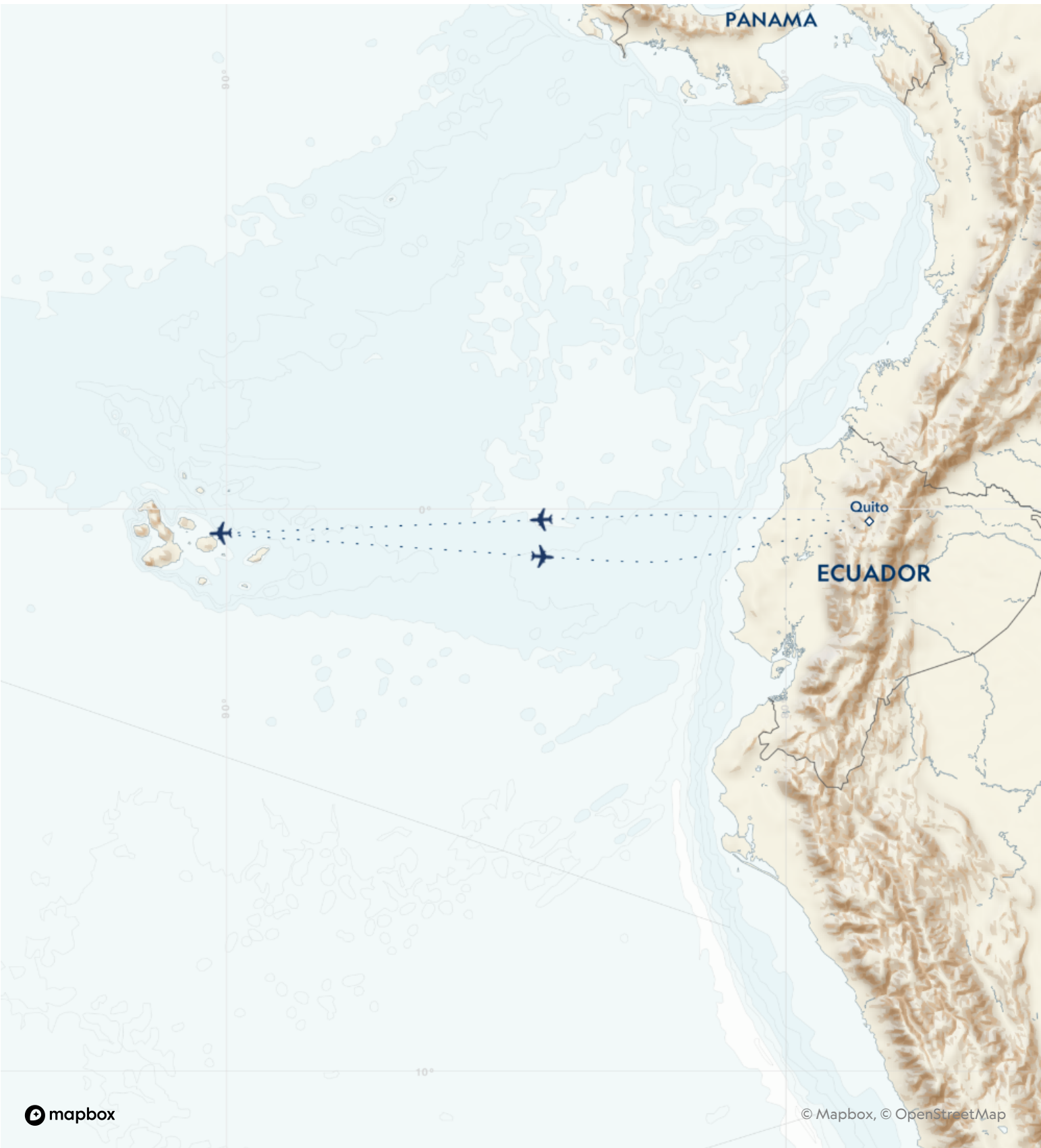
From  
**\$ 7,914** / per person  
 Does not include flights

 <b>DATES</b> Year round	 <b>DURATION</b> 10 Days
 <b>SHIPS</b> <i>National Geographic Delfina</i>	
 <b>STARTS AT</b> Quito, Ecuador	  <b>ENDS AT</b> Quito, Ecuador

## Highlights

- ★ Encounter Galápagos wildlife up close—and explore the undersea, too—on an exclusive catamaran with 16 guests and two veteran expedition staff to guide you over a full week in the islands
- ★ Adventure by kayak, paddleboard, and Zodiac on waters rich in marine life
- ★ Discover wildlife unfazed by your presence: lounge on beaches with sea lions, walk among huge colonies of marine iguanas, and delight at the antics of nesting seabirds from ship and shore
- ★ Snorkel with sea lions, turtles, and abundant fish in the protected waters of the Galápagos Marine Reserve in the company of 16 guests and your snorkel guides





# Day by day

## ■ DAY 1

### Quito, Ecuador

Arrive in Quito, Ecuador’s capital city in the Andes, where guests are met and transferred to a hotel for an overnight stay.

At 9,350 feet above sea level, Quito’s elevation makes early arrival beneficial for acclimatization. Pre-voyage extensions are available, including experiences in the lush cloud forest of the tropical Andes or additional time to explore Quito and its surrounding cultural highlights. Additional nights in Quito may also be reserved to further enhance the journey.

**Arrival Time:** Anytime

**Arrival City:** Quito, Ecuador

## ◇ DAY 2

### Quito / Galápagos Islands

In the morning, transfers to the airport and luggage assistance are provided for the recommended flight to the Galápagos Islands. Upon arrival, embark the ship.

Meals included: breakfast, lunch, dinner

## ◇ DAYS 3-8

### Exploring the Galápagos Islands

Below are a selection of islands you may visit during your expedition. Itineraries are subject to Galápagos National Park regulations.

**North Seymour:** Follow coastal trails past playful Galápagos sea lions on this wildlife-rich central island. Continue inland through a silvery forest of endemic palo santo trees, where frigatebirds nest, blue-footed boobies dance and where you may

also encounter prehistoric-looking land iguanas feeding on cactus.

**Bartolomé:** Climb the steps to the summit of this 300-foot volcanic wonderland for stunning views. Explore, swim and snorkel from the beach. Catch a glimpse of Galápagos penguins, one of the world’s rarest.

**Santiago:** Explore tide pools and look for fur seals sheltered in quiet grottos of black basalt. Swim, snorkel, kayak and paddleboard along Santiago’s spectacular coast, and explore an enchanting coastal forest where Charles Darwin once walked.

**Isabela:** Cross the Equator at Volcán Ecuador, the northernmost of Isabela’s six great shield volcanoes. Keep an eye out for whales and dolphins, sea turtles and the elusive ocean sunfish. Over two days, land in the footsteps of Darwin and Melville, and look for wildlife along the wildly eroded volcanic shore.

**Fernandina:** One of the most active oceanic volcanoes in the world, Fernandina is the youngest and most pristine island in Galápagos—and home to the strange flightless cormorant, Galápagos penguins and the largest marine iguanas. Hikes ashore lead across impressive recent lava flows.

**Española:** See swallow-tailed gulls, Española mockingbirds, Nazca boobies and, seasonally, the world’s only population of waved albatross at this bird paradise, also home to vividly colored marine iguanas. Watch sea lions on the white sand beach, and snorkel offshore at Gardner Bay.

**Floreana:** Follow a trail past a pink-tinted lagoon sometimes frequented by flamingos. Snorkel among sea lions and abundant fish or cruise along Champion Islet by Zodiac. Visit the historic mail

barrel at Post Office Bay.

**Santa Cruz:** Visit Puerto Ayora, the largest town and headquarters of both the Galápagos National Park and Charles Darwin Research Station. See the monument to Lonesome George and tour the giant tortoise breeding corrals. Witness giant tortoises roaming in the wild in the lush, green highlands.

**Santiago:** Explore tide pools and look for fur seals sheltered in quiet grottos of black basalt. Swim, snorkel, kayak and paddleboard along Santiago's spectacular coast, and explore an enchanting coastal forest where Charles Darwin once walked.

**Genovesa:** Sail across the Equator to the remote northern realm of the Galápagos into this flooded caldera, home to over one million seabirds. Visit Prince Philip's Steps at the top of the island. Highlights along the trail are many, from Nazca, red- and blue-footed boobies and frigates to gulls, owls, fur seals, hammerhead sharks, turtles and manta rays.

**San Cristobal:** Walk along the powdery white sand at a gorgeous beach fronted by iconic Kicker Rock. Explore Baquerizo Moreno, where sea lions thrive in the middle of town.

Meals included: breakfast, lunch, dinner

◇ DAY 9

## Galápagos Islands / Disembark Ship / Quito

Disembark this morning and join the recommended flight to Quito, with transfers and luggage assistance provided. Upon arrival, transfer to a hotel for an overnight stay. The remainder of the day and evening are at leisure. Opportunities are available to extend the journey with additional time in Quito or onward travel in South America, including Machu Picchu and Peru's Land of the Inca.

Meals included: breakfast

■ DAY 10

## Quito

After breakfast, transfer to the airport for onward flights.

**Departure Time:** Anytime on day 10, or anytime after 7:00 p.m. local time on day 9

**Departure City:** Quito

Meals included: breakfast

## Expedition

Quito, Ecuador → Quito, Ecuador

### 2026 DEPARTURE DATES

Aboard *National Geographic Delfina*

10 Jul	17 Jul	24 Jul		
07 Aug	14 Aug	21 Aug	28 Aug	
04 Sep	11 Sep	18 Sep	25 Sep	
02 Oct	16 Oct	23 Oct	30 Oct	
20 Nov				
04 Dec	11 Dec	18 Dec	25 Dec	

### 2027 DEPARTURE DATES

Aboard *National Geographic Delfina*

08 Jan	15 Jan	22 Jan	29 Jan	
05 Feb	12 Feb	19 Feb		
05 Mar	12 Mar	19 Mar	26 Mar	
02 Apr	09 Apr	16 Apr	23 Apr	
07 May	14 May	21 May	28 May	
04 Jun	11 Jun	18 Jun	25 Jun	
02 Jul	09 Jul	16 Jul	23 Jul	30 Jul
13 Aug	20 Aug	27 Aug		
03 Sep	10 Sep	17 Sep	24 Sep	
01 Oct	08 Oct	15 Oct	22 Oct	29 Oct
05 Nov	12 Nov			
03 Dec	10 Dec	17 Dec	24 Dec	31 Dec

### 2028 DEPARTURE DATES

Aboard *National Geographic Delfina*

07 Jan	14 Jan	21 Jan	28 Jan	
04 Feb	11 Feb	25 Feb		
03 Mar	10 Mar	17 Mar	24 Mar	31 Mar
07 Apr	14 Apr	21 Apr		
19 May	26 May			
02 Jun	09 Jun	16 Jun	23 Jun	
07 Jul	14 Jul	21 Jul	28 Jul	
04 Aug	11 Aug	18 Aug	25 Aug	
01 Sep	08 Sep	15 Sep	22 Sep	29 Sep
06 Oct	13 Oct	20 Oct	27 Oct	
03 Nov	10 Nov	17 Nov	24 Nov	
01 Dec	08 Dec	15 Dec	22 Dec	29 Dec

### 2029 DEPARTURE DATES

Aboard *National Geographic Delfina*

05 Jan	12 Jan	19 Jan	26 Jan	
02 Feb	09 Feb	16 Feb	23 Feb	
02 Mar	09 Mar	16 Mar	23 Mar	30 Mar



## *National Geographic Delfina*

GUESTS

16

CABINS

8

### **The ultimate, intimate Galápagos expedition aboard a 16-guest catamaran**

Lindblad Expeditions-National Geographic welcomes the newest and most intimate addition to the Galápagos fleet, the *National Geographic Delfina*. Setting sail in early 2025, this sleek, contemporary vessel is a luxury catamaran designed for cruising the Galápagos Islands in style and stable comfort. The elegant, well-appointed ship, with a double hull, accommodates 16 guests in eight spacious, air-conditioned cabins featuring polished wood décor. Located on two decks, staterooms have either a private balcony (Category 5) or direct access to an expansive wood deck (Category 4).

The open-air Observation Deck, which provides 360-degree views, has a shaded area for relaxation, a whirlpool hot tub and lounge chairs to take in your surroundings.

On the wrap-around Upper Deck, dine al fresco at the stern and enjoy spectacular island views from the bow as you watch for dolphins, whales and other dazzling marine life. The dining room, bar and cozy lounge with library are on the Main Deck, which is also the boarding area and marina.

*National Geographic Delfina* provides an authentic sense of these legendary islands informed by decades working closely with local communities and conservation groups. Contributing to the fully immersive experience on board are the Ecuadorian officers and crew as well as the locally sourced and sustainable farm-to-table and ocean-to-table culinary ingredients you'll enjoy at every meal. You will travel in the good company of a veteran Expedition Leader and National Geographic certified photo instructor, both licensed naturalists who will guide you on all your adventures in the Galápagos National Park and Marine Reserve.

As the home base for our classic 10-day voyage, round-trip from Baltra in the center of the islands, *National Geographic Delfina* departs Fridays year-round, with an included night in Quito or Guayaquil before and after the voyage. Embark Saturday for a full week exploring the Galápagos islands.

Available as a charter, the ship is perfectly sized for a group of family and friends, or your organization.



# Cabin Categories

## Category 4

UPPER DECK #300-303

The four Upper Deck staterooms, which can be reserved as interconnected port and starboard for friends and family, have ensuite bathrooms, ample storage and can be set up with either queen or two twin beds. Staterooms are 172 square feet with a large window and a door that opens directly onto the outside deck.



## Category 5

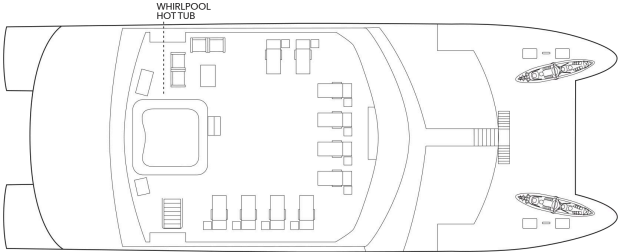
MAIN DECK #200-203

The four main-deck staterooms have private balconies, ensuite bathrooms, ample storage, and can be set up with either queen or two twin beds. Staterooms are 172 square feet with a 43 square-foot balcony, seating and two large windows.



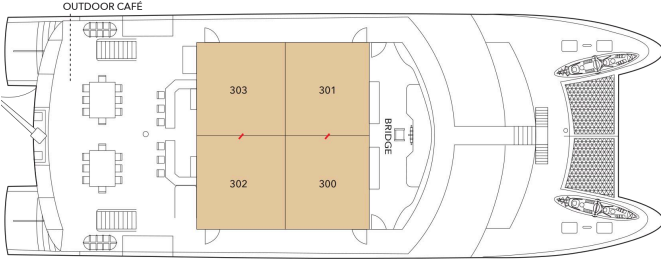
# Deck Plans

## Observation Deck



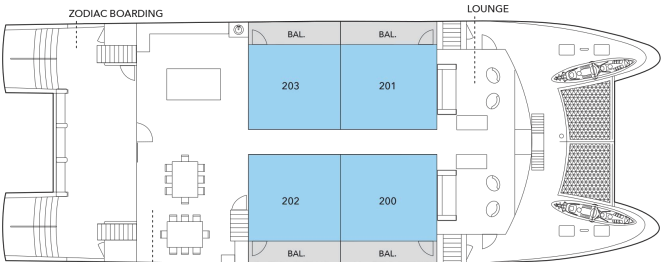
## Upper Deck

Category 4



## Main Deck

Category 5



# Ship Amenities

## Expansive Open-Air Decks

Accommodating 16 guests, the intimate, comfortable and stylish *National Geographic Delfina II* features an Observation Deck, a wrap-around Upper Deck with al fresco dining and access to the bow, open-air stairs between decks and a compact marina to gear up for snorkeling excursions. The eight staterooms have either a balcony (Category 5) or direct access onto the deck (Category 4).

## In Good Company

Explore Galápagos in the company of two veteran Lindblad Expeditions-National Geographic expedition staff, a veteran Expedition Leader and Certified Photo Instructor, both licensed naturalists. Staff are certified as Field Educators to offer the National Geographic Explorers-in-Training Program for kids and teens.

*Note: This vessel does not carry a medical professional. Please call with questions.*



## Special Offers

### 50% REDUCED DEPOSIT

Book between June 10 and August 18, 2026 and receive 50% off deposit at the time of booking on voyages departing October 1, 2026 through December 31, 2027 if booked outside of final payment. Remaining deposit balance is due at the time of final payment. Standard cancellation policy applies. Additional restrictions may apply. Offer valid for new bookings, subject to availability and offer may be withdrawn at any time without prior notice, not applicable on airfare or extensions, and may not be combined with other offers. Call for details.

### CELEBRATE LIFE'S MILESTONES

Celebrate a milestone with a group of eight or more and enjoy a special amenity package including: 5% savings on voyage fares, custom group photo, US\$150 shipboard credit for the group, and other special gifts. Milestone celebration to be communicated at time of booking.

### 10% OFF BACK-TO-BACK VOYAGES

Save 10% on consecutive departures, applicable on voyage fares only and not valid on extensions or airfare. Valid for new bookings only, subject to availability, and may not be combined with other offers. Call for details.

### SAVE 5% TRAVELING AS A GROUP

Save 5% when traveling as a group of 8 or more people. Valid for new bookings only on select departures, subject to availability, not applicable

on extensions, and may not be combined with other offers. Call for details.

### PAY BY DEBIT: EARN A \$100 ONBOARD CREDIT

The \$100 onboard credit offer is applied after the final payment and requires 85% of the cost of the voyage to be placed on a debit card. Maximum of one \$100 onboard credit per cabin. The \$100 onboard credit is a non-refundable, non-transferable credit that can be used for various onboard purchases such as global gallery and spa treatments. It has no cash value, cannot be refunded if not fully utilized, and will be forfeited if not fully redeemed by the end of the voyage. This offer is combinable with other offers. If the booking is altered or canceled, the onboard credit may be forfeited, and it cannot be transferred if the booking is moved to another guest. Lindblad Expeditions reserves the right to modify or cancel the offer without prior notice. Offer applies to Lindblad Expeditions' owned ships only. Offer valid only for Debit Cards issued in the United States for payments made from the United States.

### COMBINING OFFERS

Certain offers may be combinable, up to two savings opportunities, except where noted otherwise. For example, travel with a group of 8 or more on back-to-back expeditions, and take advantage of both savings.

## INCLUDED IN PRICE

All accommodations aboard ship or in hotels per itinerary; all meals as indicated in the itinerary, both aboard and onshore; beer, wine, cocktails, liquors and spirits aboard the ship (except certain premium brands which are available for purchase); hors d'oeuvres, 24-hour access to snacks, premium coffees and teas, non-alcoholic beverages, and filtered water; excursions; arrival/departure transfers are included for hotel arrangements made through National Geographic-Lindblad Expeditions; gratuities in Guayaquil, and Quito to local guides, drivers and tour escort; exploration tools curated to destination, such as Zodiacs, stand-up paddleboards, kayaks, snorkeling equipment (including wetsuits, masks, and fins); guidance and company of our leading expedition staff; assistance by the Lindblad Expeditions-National Geographic Certified Photo Instructor; presentations by expedition staff and expert guest speakers; Basic Wi-Fi aboard ship; complimentary reusable water bottle; onboard physician consultations; morning stretch classes and 24-hour access to exercise equipment; 24-hour access to lounge, observation decks, library, and other shared spaces; park and site entrance fees, special access permits, and port taxes. Unused services or items included in our programs are non-refundable.

## NOT INCLUDED IN PRICE

Airfare\* (except flights when indicated as included); pre- and post-expedition extensions; additional hotel nights (except when indicated as included); crew gratuities; private transfers; laundry, spa treatments, scuba diving, and phone services; travel protection plans; and passport, visa, and immigration fees.

\*Recommended flight costs include flight(s) that take place during the date range of your trip to transport travelers from one itinerary destination to another. This cost also includes ground transportation, luggage transfer, and airport assistance. If you prefer to arrange your own flights privately, have alternate means of transport, or wish to modify at a later time, please contact an Expedition Specialist at 1.833.400.0831

Additional costs associated with medical services outside onboard physician consultation.

## TRAVEL PROTECTION PLAN

We strongly recommend our guests to take advantage of our Travel Protection Plan. This plan offers comprehensive coverage to protect you from cancellation fees, costs incurred due to trip delays/interruption, damage or loss of baggage, medical assistance, and evacuation during your travels. Our Travel Protection Plan is available for U.S. residents only, and may be purchased any time prior to final payment due date, Travel Protection premiums are non-refundable once plan is purchased. Learn more about our Travel Protection "Plus" Plan: <https://www.expeditions.com/terms-conditions/travel-protection-plan/>

## CANCELLATION POLICY

Review our cancellation policy: <https://www.expeditions.com/cancellation-policy/>