

Galápagos & South America
0° 53' S 87° 36' W

Galápagos aboard National Geographic Endeavour II

Zodiac to pristine beaches, kayak or stand-up paddleboard along volcanic shores, explore wildlife on land or under the sea. Experience the Galápagos aboard our elegant and nimble ship, well-equipped for up-close exploration. Perfect for couples, families, and solo travelers. Encounter abundant wildlife—blue-footed boobies, marine iguanas, Darwin’s finches, pink flamingos, giant tortoises and more. The wildlife of Galápagos is legendary for being without fear in the presence of humans.

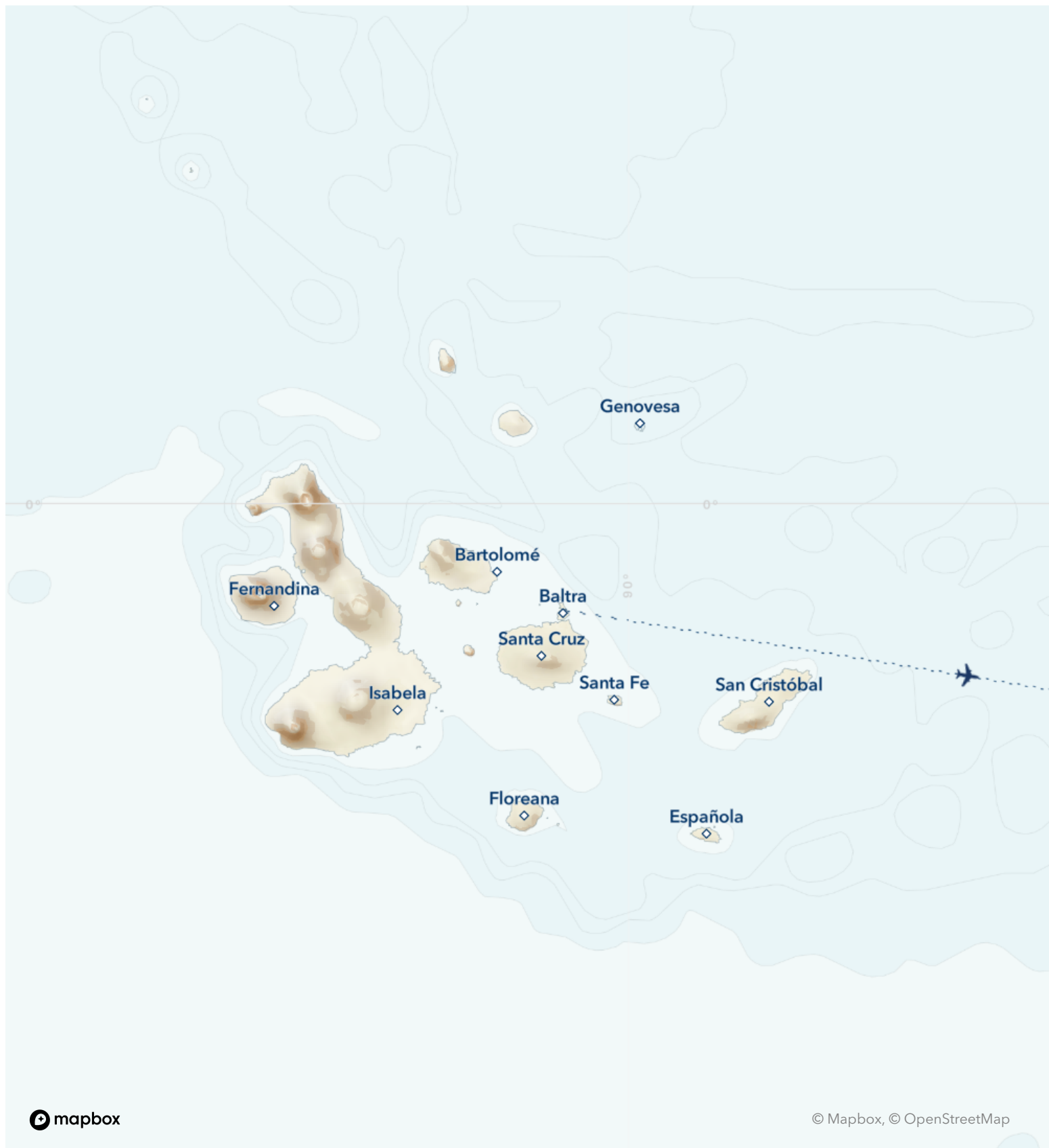
From
\$ 6,605 / per person
Does not include flights

	DATES Year round		DURATION 10 Days
	SHIPS <i>National Geographic Endeavour II</i>		
	STARTS AT Quito or Guayaquil, Ecuador	→	 ENDS AT Quito or Guayaquil, Ecuador

Highlights

- ★ Benefit from our 50+ years of experience in Galápagos and deep knowledge of the archipelago to see all you came for and more
- ★ Adventure by kayak, paddleboard, glass-bottom boat, and Zodiac
- ★ Walk among wildlife unfazed by your presence: lounge on beaches with sea lions, marvel at huge colonies of marine iguanas, and see nesting seabirds
- ★ Snorkel with sea lions, turtles, and abundant fish in the protected waters of the Galápagos Marine Reserve





Day by day

■ DAY 1

Quito or Guayaquil, Ecuador

We meet you on arrival in Ecuador, either in Quito, Ecuador's capital city in the Andes, or in the coastal city of Guayaquil, for an included transfer to your convenient hotel for an overnight stay. Both cities are well-served by international carriers, and Galapagos flights start and end in Quito with a stop in Guayaquil. Guests in Guayaquil stay at the locally owned Hotel Oro Verde and have the choice of several hotels in Quito, including a convenient airport hotel. You may opt for a pre-voyage extension to [Mashpi Reserve](#) in the tropical Andes outside Quito, a biodiversity hotspot. Or choose to reserve [additional hotel nights and tours](#) in Quito or Guayaquil.

Arrival Time: Anytime.

Arrival City: Quito or Guayaquil, Ecuador

◇ DAY 2

Quito or Guayaquil / Galápagos Islands

In the morning we will fly to the Galápagos and embark the *National Geographic Endeavour II*. After lunch, our journey begins as we explore the islands and their remarkable wildlife.

Meals included: breakfast, lunch, dinner

◇ DAYS 3-8

Galápagos Islands

Below are a selection of islands we may visit during our expedition. Itineraries are subject to Galápagos National Park regulations.

North Seymour:

Follow coastal trails past playful Galápagos sea

lions on this wildlife-rich central island. Continue inland through a silvery forest of endemic palo santo trees, where frigatebirds nest, blue-footed boobies dance, and where we may also encounter prehistoric-looking land iguanas feeding on cactus.

Isabela:

Cross the Equator at Volcán Ecuador, northernmost of Isabela's six great shield volcanoes. Keep an eye out for whales and dolphins, sea turtles, and the elusive ocean sunfish. Over two days, land in the footsteps of Darwin and Melville, and look for wildlife along the wildly eroded volcanic shore.

Fernandina:

One of the most active oceanic volcanoes in the world, Fernandina is the youngest and most pristine island in Galápagos – and home to the strange flightless cormorant, Galápagos penguins, and the largest marine iguanas. Hikes ashore lead across impressive recent lava flows.

Española:

See swallow-tailed gulls, Española mockingbirds, Nazca boobies and, seasonally, the world's only population of waved albatross at this bird paradise, also home to vividly colored marine iguanas. Watch sea lions on the white sand beach, and snorkel offshore at Gardner Bay.

Floreana:

Follow a trail past a rose pink-tinted lagoon sometimes frequented by flamingos. Snorkel among sea lions and abundant fish, or cruise along Champion Islet by Zodiac. Visit the historic mail barrel at Post Office Bay.

Santa Cruz:

Visit Puerto Ayora, the largest town and headquarters of both the Galápagos National Park and Charles Darwin Research Station. See the monument to Lonesome George, and tour the giant

tortoise breeding corrals. Witness the giant tortoises roaming in the wild in the lush, green highlands.

Bartolomé:

Climb the steps to the summit of this 300-foot volcanic wonderland for stunning views. Explore, swim, and snorkel from the beach. Catch a glimpse of Galápagos penguins, one of the world's rarest.

Santiago:

Explore tide pools and look for fur seals sheltered in quiet grottos of black basalt. Swim, snorkel, kayak, and paddleboard along Santiago's spectacular coast, and explore an enchanting coastal forest where Charles Darwin once walked.

Genovesa:

Sail across the Equator to the remote northern realm of the Galápagos into this flooded caldera, home to over one million seabirds. Visit Prince Philip's Steps at the top of the island. Highlights along the trail are many, from Nazca, red- and blue-footed boobies and frigates, to gulls, owls, fur seals, hammerhead sharks, turtles, and manta rays.

San Cristobal:

Search for red-footed boobies and the endemic mockingbird and lava lizard – found only on this easternmost island. Walk along the powdery white sand at a gorgeous beach fronted by iconic Kicker Rock. Explore Baquerizo Moreno, where sea lions thrive in the middle of town.

Meals included: breakfast, lunch, dinner

◇ DAY 9

Galápagos Islands / Disembark / Guayaquil or Quito

Disembark this morning for a return flight to the mainland, where we transfer to Hotel Oro Verde in Guayaquil, and have several [options in Quito](#) , including a convenient airport hotel. The afternoon and evening are at your leisure. You may be able to take advantage of overnight flights home. Ask

your expedition specialist about Peru, Quito, and other post-voyage options. Many guests upon arrival in Guayaquil continue on a flight to Lima, Peru for [Galápagos Aboard National Geographic Endeavour II + Peru's Land of the Inca](#) .

Meals included: breakfast

■ DAY 10

Guayaquil or Quito

After breakfast, transfer to the airport and board flights home, unless you have arranged for additional nights or an extension.

Departure Time: Anytime on day 10, or anytime after 7:00 p.m. local time on day 9.

Departure City: Guayaquil or Quito

Meals included: breakfast

Expedition

Quito or Guayaquil, Ecuador → Quito or Guayaquil, Ecuador

2024 Departure Dates

Aboard *National Geographic Endeavour II*

03 May	10 May	17 May	24 May	31 May
07 Jun	14 Jun	21 Jun	28 Jun	
05 Jul	12 Jul	19 Jul	26 Jul	
02 Aug	09 Aug	16 Aug	23 Aug	30 Aug
06 Sep	13 Sep	20 Sep	27 Sep	
01 Nov	08 Nov	15 Nov	22 Nov	29 Nov
06 Dec	13 Dec	20 Dec	27 Dec	

2025 Departure Dates

Aboard *National Geographic Endeavour II*

03 Jan	10 Jan	17 Jan	24 Jan	31 Jan
07 Feb	14 Feb	21 Feb	28 Feb	
07 Mar	14 Mar	21 Mar	28 Mar	
04 Apr	11 Apr	18 Apr	25 Apr	
02 May	09 May	16 May	23 May	30 May
06 Jun	13 Jun	20 Jun	27 Jun	
04 Jul	11 Jul	18 Jul	25 Jul	
01 Aug	08 Aug	15 Aug	22 Aug	
05 Sep	12 Sep	19 Sep	26 Sep	
17 Oct	24 Oct			
07 Nov	14 Nov	21 Nov	28 Nov	
05 Dec	12 Dec	19 Dec	26 Dec	

2026 Departure Dates

Aboard *National Geographic Endeavour II*

02 Jan	09 Jan	16 Jan	23 Jan	30 Jan
06 Feb	13 Feb	20 Feb	27 Feb	
06 Mar	13 Mar	20 Mar	27 Mar	



National Geographic Endeavour II

Guests

96

Cabins

52

Our latest and most family-friendly ship, the *National Geographic Endeavour II* is exceptionally nimble and maneuverable.

Born in the cold waters of Patagonia, *National Geographic Endeavour II* was built for heavy seas. Now, permanently stationed in Galápagos, she comfortably sails the Equator.

A floor-to-ceiling rebuild when she repositioned to the tropics meant she could be crafted to perfectly accommodate the Lindblad style of travel. Where she previously carried 136 passengers, she now accommodates just 96 guests in 52 thoughtfully appointed cabins. She is exceptionally nimble and maneuverable,

with a shallow draft to get up close, great viewing from all public spaces, an expansive open-air observation deck, large windows in cabins and suites, and state-of-the-art tools for exploration including a glass-bottom boat, underwater cameras, video microscope, plus kayaks and stand-up paddleboards.

She replaced the beloved *National Geographic Endeavour*, which donated much of her artwork and her great spirit of camaraderie. Guests have described being aboard *National Geographic Endeavour II* as feeling like a cross between a grand floating hotel and scientific research vessel. She is beyond comfortable, and welcoming to solos, groups, and kids of all ages, and equipped for the up-close and personal explorations that makes Galápagos the trip of a lifetime.

Welcome aboard. From your first sight of the art to the left of the reception desk (part of the pioneering polar art exhibit, *Change*, installed onboard) to the sleek lines and calming neutrals, you can feel the rigors of travel drop away. Ahead: only supreme comfort and the exhilaration of discovery.

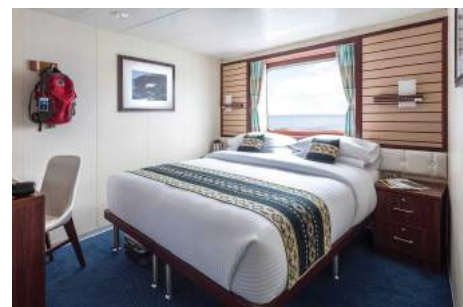


Cabin Categories

Category 1

Upper Deck, Forward: #201, 202

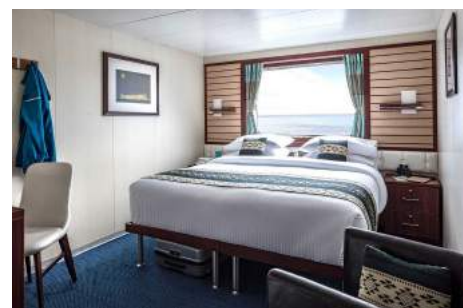
All cabins face outside with a large window, two single beds that can convert to a queen-sized bed. Furniture includes an armchair, desk, two nightstands, and a closet.



Category 2

Upper Deck: #211, 213-219, 221-222, 224-229

All cabins feature two single beds that can be convert to a queen-sized bed with a large window. Furniture includes an armchair, desk, two nightstands, and a closet. Cabins 224 & 225 can accommodate a third person with a fold-down murphy bed. Cabins 226/228 and 227/229 are interlocking with a connecting door.



Category 3

Lounge Deck: #311, 313-319, 321, 322, 324, 326, 328, 330

All cabins face outside with a large window, two single beds that can convert to a queen-sized bed. Furniture includes an armchair, desk, 2 nightstands and a closet. Cabins 326 & 328 can accommodate a third person with a fold-down murphy bed. Cabins 315/317, 316/318, and 320/322 are interlocking with a connecting door.



Category 4

Bridge Deck: #409, 411-414, 416, 418

All cabins are outside with a large window, two single beds that can convert to a queen-sized bed. Furniture includes an armchair, desk, two nightstands, and closet. Cabins 411/413 and 416/418 are interlocking with a connecting door.



Shared Accommodations:

Connecting cabins are perfect for families or groups of friends. In all, seven cabins can be connected. Triple and solo cabins are available too, to welcome all types of travelers.

Suite A

Lounge Deck, Mid-ship: #320

Cabin features two large windows, armchair, large suite-sized bathroom, double closet, writing desk and chair, mini-fridge, two large windows and two nightstands. 2 single beds that can convert to a queen. This suite and cabin 322 are interlocking with a connecting door.



Suite B

Bridge Deck, Mid-ship: #420, 422

These suites feature floor-to-ceiling windows that provide incredible views and natural sunlight. Furniture includes a sofa that converts to a single bed, a double closet, writing desk and chair, two nightstands, mini fridge, and large suite-sized bathroom. Cabins have two single beds that can be converted to a queen.



Suite C

Bridge Deck, Mid-ship: #415

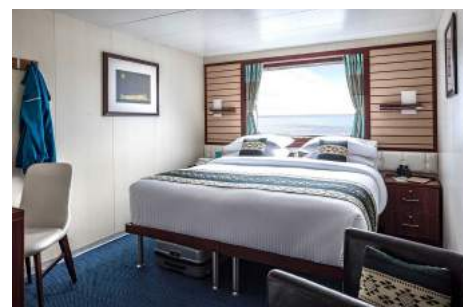
This suite is the largest cabin aboard with a separate well-appointed separate seating area. The seating area includes a sofa that converts to a single bed, writing desk, lounge chair, coffee table, armchair and mini fridge. The cabin features two single beds that convert to a queen, two nightstands, extra closet space, and a large suite bathroom.



Category 2 Solo

Upper Deck: #203-209

These cabins face outside with a large window with either a wide single bed, or two singles that can convert to a queen. In the cabin you will also find an armchair, desk, two nightstands, and a closet. Equal in size and amenities to other Category 2 cabins.



Category 3 Solo

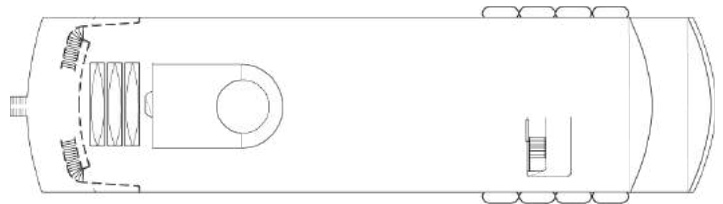
Lounge Deck: #325, 327

These cabins face outside with a large window and two single beds that convert to a queen. In the cabins you will also find an armchair, desk, two nightstands, and a closet. Equal in size and amenities to other category 3 cabins.



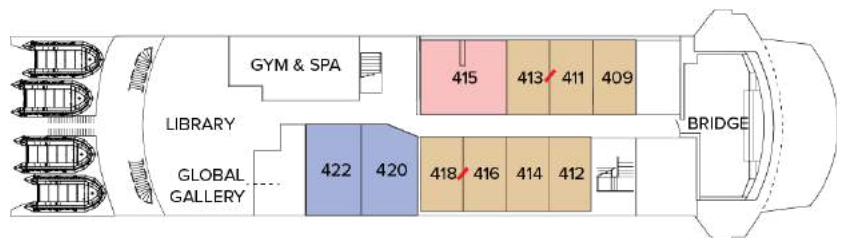
Deck Plans

Observation Deck



Bridge Deck

- Category 4
- Suite B
- Suite C



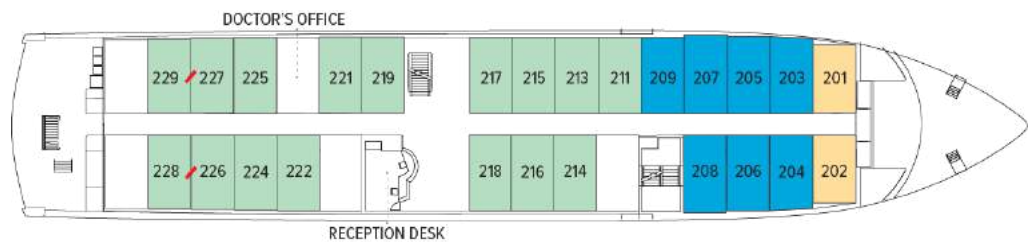
Lounge Deck

- Category 3
- Suite A
- Category 3 Solo

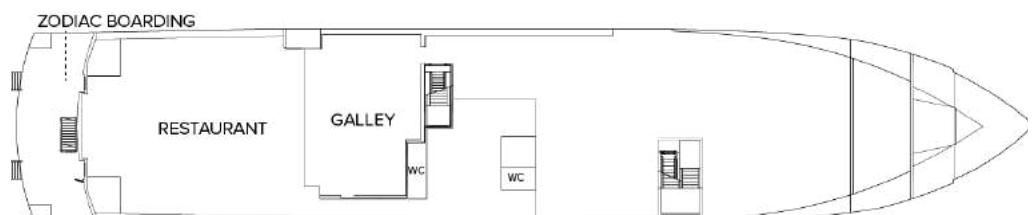


Upper Deck

- Category 1
- Category 2
- Category 2 Solo



Main Deck



Ship amenities

Public Areas

Forward lounge and bar accommodating all guests for presentations and gatherings, restaurant, large library with Mac kiosks, open-air observation deck, underwater gear area and dual Zodiac boarding platform, and “open bridge,” where guests can meet the Captain and officers and learn about navigation.

Meals

Meals are served in the dining room or sometimes outdoors, in a single, unassigned seating with a sociable, informal atmosphere with Ecuadorian flair.

Cabins

52 outside cabins. All feature ocean views, private facilities, climate controls, and hair dryers, plus Ethernet, Wi-Fi connections and USB ports for mobile devices. Choose from suites on two decks, plus connecting cabins and triples are available for families and friends.

Expedition Equipment

Zodiacs to get to shore quickly, glass-bottom boat, kayaks and paddleboards for personal explorations, snorkel gear and wetsuits for both adults and children, video microscope and underwater video camera.

Special Features

A full-time doctor, undersea specialist, Lindblad-National Geographic certified photo instructor and video chronicler.

Wellness

A fitness center, *LEXspa* treatment room, exercise room and wellness specialists.



Self-Disinfecting Ships

Act Clean Coat™ is a light-activated, self-disinfecting cleaning process that continuously breaks down viruses, bacteria, mold, and airborne allergens across all ship surfaces. This non-toxic, chemical-free system also helps us save over one million gallons of water each year in our cleaning procedures.

Special Offers

ROUND-TRIP GALÁPAGOS AIR INCLUDED UP TO \$1,400

Book between April 18 and May 9, 2024. Airfare included up to a ticket value of \$1,400 per person when booking a select departure of National Geographic Islander II or National Geographic Endeavour II on select Galápagos Expeditions. To qualify for the offer, a non-refundable deposit in the amount of 25% (twenty five percent) of your booking is due at the time of booking. Standard cancellation terms will not apply. Air Included Air Offer must be communicated at time of booking by quoting "AIR INCLUDED". To qualify for the offer, airfare must be ticketed by Lindblad Expeditions. In the case that airfare at the time of booking is higher than \$1,400 per person, guest will be required to pay any amount in excess of \$1,400 per person. Includes internal flights between mainland Ecuador, Galápagos, and Peru (depending on itinerary). Offer is valid for new bookings only, subject to availability, may not be combined with other offers, and is applicable on extensions. Baggage fees may incur additional costs and seat assignments may not be guaranteed. Call for details.

COMPLIMENTARY TRANSFERS

We include arrival and departure airport transfers for all guests in Ecuador and Peru, whether by group, hotel shuttle, or private transfer (please share your flight information two weeks before your departure). In addition, we provide transfers for guests who are booked on ticketed internal flights from Guayaquil, Quito, or Lima to and from the Galapagos, Cusco or Iquitos.

SUITE EXCLUSIVES

Spacious living areas and incredible views immerse you in the beauty of your marine surroundings. Our new Suite Exclusives package helps make your voyage all the more memorable. [Learn more](#)

CELEBRATE LIFE'S MILESTONES

Celebrate a milestone with a group of eight or more and enjoy a special amenity package including: 5% savings on voyage fares, custom group photo, US\$150 shipboard credit for the group, and other special gifts. Milestone celebration to be communicated at time of booking. Valid for new bookings only on select departures, subject to availability, not applicable on airfare or extensions, and may not be combined with other offers. Deposit, final payments, and cancellation policies for group travel vary from our regular policies. Call for details.

10% OFF BACK-TO-BACK VOYAGES

Save 10% on consecutive departures, applicable on voyage fares only and not valid on extensions or airfare. Valid for new bookings only, subject to availability, and may not be combined with other offers. Call for details.

BRINGING THE KIDS

We believe sharing an expedition with children is a life-enhancing experience. Take \$500 off for each child under the age of 18 on any departure. Not applicable on extensions or airfare. Call for details.

SAVE 5% TRAVELING AS A GROUP

Save 5% when traveling as a group of eight or more people. Valid on voyage fares only and not applicable on extensions or airfare. Deposit, final payments, and cancellation policies for group travel vary from our regular policies. Valid for new bookings only, subject

to availability, and may not be combined with other offers. Call for details.

COMBINING OFFERS

Certain offers may be combinable, up to two savings opportunities, except where noted otherwise.

For example, travel with a group of 8 or more on back-to-back expeditions, and take advantage of both savings.

Included in price

All accommodations aboard ship or in hotels per itinerary; all meals as indicated in the itinerary, both aboard and onshore; beer, wine, cocktails, and spirits aboard the ship (except certain super premium brands which are available for purchase); hors d'oeuvres, 24-hour access to snacks, premium coffees and teas, non-alcoholic beverages, and filtered water; excursions and airport transfers to and from recommended flights, as indicated in the itinerary; exploration tools curated to destination, such as Zodiacs, stand-up paddleboards, kayaks, snorkeling equipment (including wetsuits, masks, and fins); guidance and company of our leading expedition staff; assistance by the Lindblad Expeditions-National Geographic Certified Photo Instructor; presentations by expedition staff and expert guest speakers; one hour of Wi-Fi per person per day aboard ship; complimentary reusable water bottle; services of a physician; morning stretch classes and 24-hour access to exercise equipment; 24-hour access to lounge, observation decks, library, and other shared spaces; park and site entrance fees, special access permits, and port taxes. Unused services or items included in our programs are non-refundable.

Not included in price

Airfare (except flights when indicated as included); pre- and post-expedition extensions; additional hotel nights (except when indicated as included); crew gratuities; private transfers; laundry, spa treatments, scuba diving, and phone services; travel protection plans; and passport, visa, and immigration fees.

Travel protection plan

We strongly recommend our guests to take advantage of our Travel Protection Plan. This plan offers comprehensive coverage to protect you from cancellation fees, costs incurred due to trip delays/interruption, damage or loss of baggage, medical assistance, and evacuation during your travels. Our Travel Protection Plan is available for U.S. residents only, and may be purchased any time prior to final payment due date, Travel Protection premiums are non-refundable once plan is purchased. Learn more about our Travel Protection "Plus" Plan: <https://www.expeditions.com/terms-conditions/travel-protection-plan/>

Cancellation policy

Review our cancellation policy: <https://www.expeditions.com/cancellation-policy/>