



Galápagos & South America  
0° 53' S 89° 36' W

## Exploring Galápagos

Zodiac to pristine beaches, kayak or stand-up paddleboard along volcanic shores, explore wildlife on land or under the sea. Perfect for couples, families, and solo travelers. Encounter abundant wildlife—blue-footed boobies, marine iguanas, Darwin’s finches, pink flamingos, giant tortoises and more. The wildlife of Galápagos is legendary for being without fear in the presence of humans. Certified and experienced divers on select departures aboard *National Geographic Endeavour II* can take advantage of the option to scuba dive (divers must be pre-qualified and reserve their space in advance). Starting in 2027, guests can take this expedition aboard the sleek and elegant *National Geographic Islander II*, which feels like a private yacht.

From

**\$ 5,834** / per person  
Does not include flights



### DATES

Year round



### DURATION

10 Days



### SHIPS

*National Geographic Islander II*  
*National Geographic Endeavour II*  
*National Geographic Gemini*



### STARTS AT

Quito or  
Guayaquil,  
Ecuador



### ENDS AT

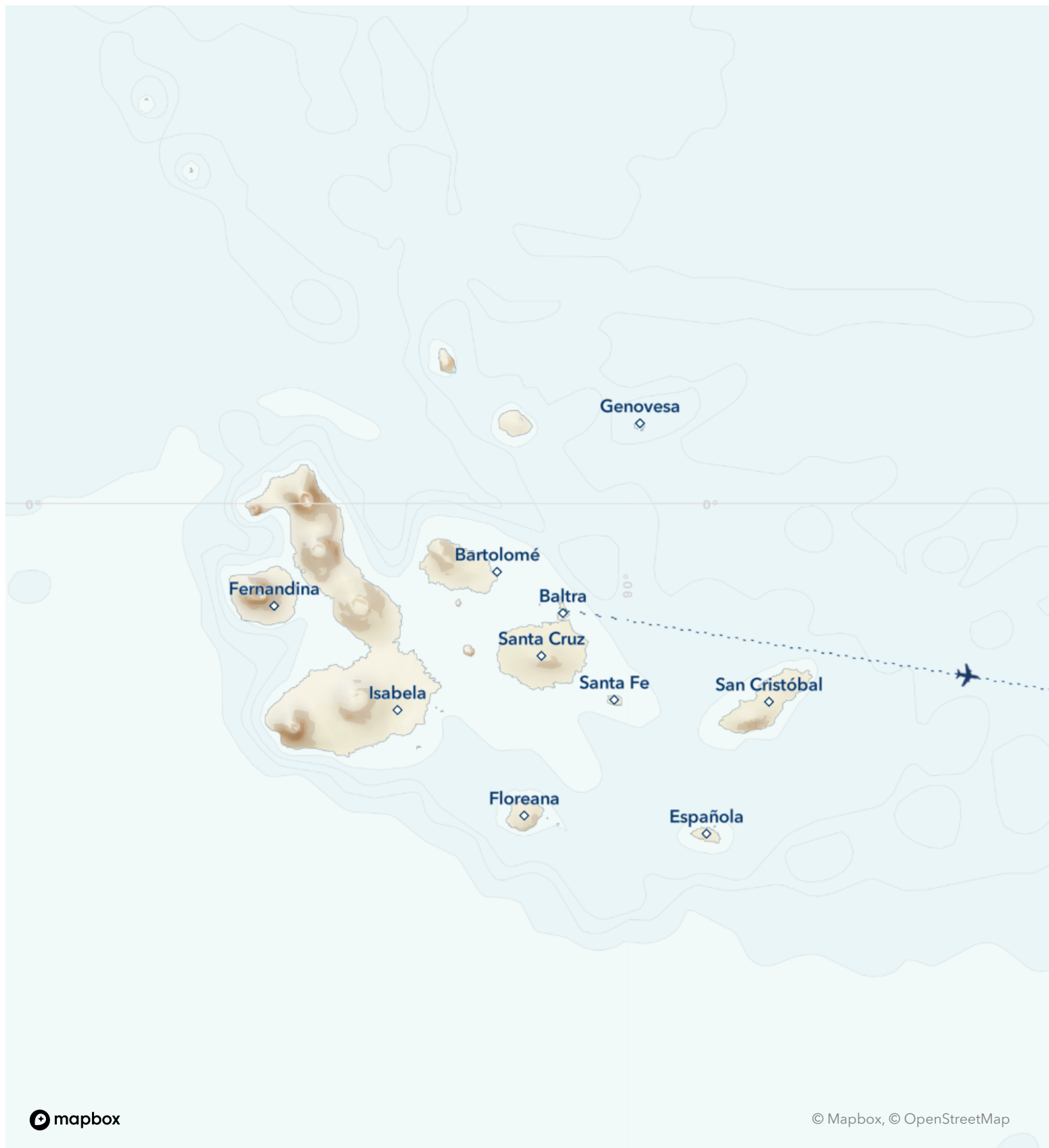
Quito or  
Guayaquil,  
Ecuador



## Highlights

- ★ Benefit from our 50+ years of experience in Galápagos and deep knowledge of the archipelago to see all you came for and more
- ★ Adventure by kayak, paddleboard, glass-bottom boat, and Zodiac
- ★ Walk among wildlife unfazed by your presence: lounge on beaches with sea lions, marvel at huge colonies of marine iguanas, and see nesting seabirds
- ★ Snorkel with sea lions, turtles, and abundant fish in the protected waters of the Galápagos Marine Reserve





## Day by day

### ■ DAY 1

#### Quito or Guayaquil, Ecuador

Arrive in Ecuador, either in Quito, Ecuador's capital city in the Andes, or in the coastal city of Guayaquil, for an included transfer to your convenient hotel for an overnight stay. Both cities are well-served by international carriers, and Galápagos flights start and end in Quito with a stop in Guayaquil. Guests in Guayaquil stay at the locally owned Hotel Oro Verde and have the choice of several hotels in Quito, including a convenient airport hotel.

Note that Quito sits at a 9,350ft elevation. It is an alternative option to Guayaquil, at no additional cost, and recommended if you opt for a pre-voyage extension to [Mashpi Reserve](#) in the tropical Andes outside Quito, or take just one extra day on the [See Quito Pre-Voyage Extension](#). You can also choose to reserve [additional hotel nights and tours](#) in Quito or Guayaquil.

**Arrival Time:** Anytime.

**Arrival City:** Quito or Guayaquil, Ecuador

### ◇ DAY 2

#### Quito or Guayaquil / Galápagos Islands

In the morning, if you're joining the recommended flight to the Galapagos, transfers to the airport and luggage assistance will be provided. Upon arrival, embark the ship.

**Meals included:** breakfast, lunch, dinner

### ◇ DAYS 3-8

#### Galápagos Islands

Below is a selection of islands you may visit during your expedition. Itineraries are subject to Galápagos National Park regulations.

**North Seymour:** Follow coastal trails past playful Galápagos sea lions on this wildlife-rich central island. Continue inland through a silvery forest of endemic palo santo trees, where frigatebirds nest, blue-footed boobies dance and where you may also encounter prehistoric-looking land iguanas feeding on cactus.

**Isabela:** Cross the Equator at Volcán Ecuador, northernmost of Isabela's six great shield volcanoes. Keep an eye out for whales and dolphins, sea turtles and the elusive ocean sunfish. Over two days, land in the footsteps of Darwin and Melville, and look for wildlife along the wildly eroded volcanic shore.

**Fernandina:** One of the most active oceanic volcanoes in the world, Fernandina is the youngest and most pristine island in Galápagos—and home to the strange flightless cormorant, Galápagos penguins and the largest marine iguanas. Hikes ashore lead across impressive recent lava flows.

**Española:** See swallow-tailed gulls, Española mockingbirds, Nazca boobies and, seasonally, the world's only population of waved albatross at this bird paradise, also home to vividly colored marine iguanas. Watch sea lions on the white sand beach and snorkel offshore at Gardner Bay.

**Floreana:** Follow a trail past a pink-tinted lagoon sometimes frequented by flamingos. Snorkel among sea lions and abundant fish or cruise along Champion Islet by Zodiac. Visit the historic mail barrel at Post Office Bay.

**Santa Cruz:** Visit Puerto Ayora, the largest town and headquarters of both the Galápagos National Park and Charles Darwin Research Station. See the monument to Lonesome George and tour the giant tortoise breeding corrals. Witness giant tortoises roaming in the wild in the lush, green highlands.



**Bartolomé:** Climb the steps to the summit of this 300-foot volcanic wonderland for stunning views. Explore, swim and snorkel from the beach. Catch a glimpse of Galápagos penguins, one of the world's rarest.

**Santiago:** Explore tide pools and look for fur seals sheltered in quiet grottos of black basalt. Swim, snorkel, kayak and paddleboard along Santiago's spectacular coast, and explore an enchanting coastal forest where Charles Darwin once walked.

**Genovesa:** Sail across the Equator to the remote northern realm of the Galápagos into this flooded caldera, home to over one million seabirds. Visit Prince Philip's Steps at the top of the island. Highlights along the trail are many, from Nazca, red- and blue-footed boobies and frigates, to gulls, owls, fur seals, hammerhead sharks, turtles and manta rays.

**San Cristobal:** Search for red-footed boobies and the endemic mockingbird and lava lizard—found only on this easternmost island. Walk along the powdery white sand at a gorgeous beach fronted by iconic Kicker Rock. Explore Baquerizo Moreno, where sea lions thrive in the middle of town.

Meals included: breakfast, lunch, dinner

## ◇ DAY 9

### Galápagos Islands / Disembark Ship / Guayaquil or Quito

Disembark this morning and join the recommended flight to Guayaquil or Quito; transfers to the airport and luggage assistance will be provided. Unwind at Hotel Oro Verde in Guayaquil or pick from several [options in Quito](#), including a convenient airport hotel. The afternoon and evening are at your leisure. You may be able to take advantage of overnight flights home. Ask your expedition specialist about Peru, Quito and other post-voyage options. Upon arrival in Guayaquil, many guests continue on a

flight to Lima, Peru, for [Exploring Galápagos + Peru's Land of the Inca](#).

Meals included: breakfast

## ■ DAY 10

### Guayaquil or Quito

After breakfast, transfer to the airport and board flights home, unless you have arranged for additional nights or an extension.

**Departure Time:** Anytime on day 10, or anytime after 7:00 p.m. local time on day 9.

**Departure City:** Guayaquil or Quito

Meals included: breakfast

### Expedition

Quito or Guayaquil, Ecuador → Quito or  
Guayaquil, Ecuador

### 2026 Departure Dates

Aboard *National Geographic Endeavour II*

30 Jan				
06 Feb	13 Feb	20 Feb	27 Feb	
06 Mar	13 Mar	20 Mar	27 Mar	
03 Apr	10 Apr	17 Apr	24 Apr	
01 May	08 May	15 May	22 May	29 May
05 Jun	12 Jun	19 Jun	26 Jun	
03 Jul	10 Jul	17 Jul	24 Jul	31 Jul
07 Aug	14 Aug	21 Aug		
25 Sep				
02 Oct	09 Oct	16 Oct	23 Oct	30 Oct
06 Nov	13 Nov	20 Nov	27 Nov	
04 Dec	11 Dec	18 Dec	25 Dec	

Aboard *National Geographic Gemini*

30 Jan				
06 Feb	13 Feb	20 Feb	27 Feb	
06 Mar	13 Mar	20 Mar	27 Mar	
03 Apr	10 Apr	17 Apr	24 Apr	
01 May	08 May	15 May	22 May	29 May
05 Jun	12 Jun	19 Jun	26 Jun	
03 Jul	10 Jul	17 Jul	24 Jul	31 Jul
07 Aug	14 Aug	21 Aug	28 Aug	
04 Sep	11 Sep	18 Sep	25 Sep	
02 Oct	09 Oct	16 Oct		
27 Nov				
04 Dec	11 Dec	18 Dec	25 Dec	

### 2027 Departure Dates

Aboard *National Geographic Endeavour II*

01 Jan	08 Jan	15 Jan	22 Jan	29 Jan
05 Feb	12 Feb	19 Feb	26 Feb	
05 Mar	12 Mar	19 Mar	26 Mar	
02 Apr	09 Apr	16 Apr	23 Apr	30 Apr
07 May	14 May	21 May	28 May	
04 Jun	11 Jun	18 Jun	25 Jun	
02 Jul	09 Jul	16 Jul	23 Jul	30 Jul
06 Aug	13 Aug	20 Aug	27 Aug	
03 Sep	24 Sep			
01 Oct	08 Oct	15 Oct	22 Oct	29 Oct
05 Nov	12 Nov	19 Nov	26 Nov	
03 Dec	10 Dec	17 Dec	24 Dec	31 Dec

Aboard *National Geographic Gemini*

01 Jan	08 Jan	15 Jan	22 Jan	29 Jan
05 Feb	12 Feb	19 Feb	26 Feb	
05 Mar	12 Mar	19 Mar	26 Mar	

Aboard *National Geographic Islander II*

02 Apr	09 Apr	16 Apr	23 Apr	30 Apr
07 May	14 May	21 May	28 May	
04 Jun	11 Jun	18 Jun	25 Jun	
02 Jul	09 Jul	16 Jul	23 Jul	30 Jul
06 Aug	13 Aug	20 Aug	27 Aug	
03 Sep	10 Sep	17 Sep	24 Sep	
29 Oct				
12 Nov	19 Nov			
03 Dec	10 Dec	17 Dec	24 Dec	31 Dec

### 2028 Departure Dates

Aboard *National Geographic Endeavour II*

07 Jan	14 Jan	21 Jan	28 Jan
04 Feb	11 Feb	18 Feb	25 Feb
03 Mar	10 Mar	17 Mar	24 Mar

Aboard *National Geographic Islander II*

07 Jan	14 Jan	28 Jan	
11 Feb	18 Feb	25 Feb	
03 Mar	10 Mar	17 Mar	24 Mar



## ***National Geographic Islander II***

---

**Guests**

**48**

**Suites**

**26**

---

### **A New Ship with Just 26 Spacious Staterooms and Suites Sailing the Galápagos Islands**

Lindblad Expeditions is thrilled to welcome the National Geographic Islander II to our fleet. Sleek and elegant, she will sail year-round in the Galápagos Islands and elevate the guest experience to an entirely new level.

National Geographic Islander II is a gracious expedition vessel that feels like a private yacht. With only 26 staterooms and suites, and accommodating just 48 guests, she sails with a 1:1 guest-to-crew ratio.

Special features include teak decks, indoor-outdoor dining options, an impressive observation deck, and new amenities like a climate-controlled Marina and a dedicated Science Hub.



National Geographic *Islander II* provides an authentic sense of place, drawing on our decades of partnering with local communities and conservation groups. Contributing to the fully immersive Ecuadorian experience on board are Ecuadorian staff and locally sourced and sustainable farm-to-table and ocean-to-table culinary ingredients, as well as artisan spa elements and handcrafted textiles, art, and décor all regionally created.

### **An authentic, immersive experience in the Galàpagos**

The *National Geographic Islander II* celebrates Lindblad's deep connection to the islands, Ecuador, and its people with a deeply immersive and truly unique Ecuadorian cultural experience. The carefully considered food and beverage program highlights the four regions of Ecuador with locally sourced farm-to-table ingredients. Regional ingredients can even be found in spa products. From Ecuadorian shipboard staff to artwork, textiles, and décor created by local artists and artisans and Ecuadorean music heard throughout the ship, guests will experience the beauty and wonder of Ecuador both on and off the ship.



# Cabin Categories     Bridge Deck

## Category SU

**Guest Suite:** #301, 302, 306, 308, 310, 311, 312, 316

280 sq. ft. with two panoramic windows, twin/king convertible beds, seating area with sofa, lounge chair, and marble double-sink bathrooms with rain shower. #301, 302, 306, 308, 310-312, 316. #312 & #316 are triple occupancy with sofa made up as third bed. Third person rates are one-half the double occupancy rate. Connecting Suites: #301/303, 302/306



## Category SO

**Solo Suite:** #315, 318.

280 sq. ft. with two panoramic windows, twin/king convertible beds, seating area with sofa, lounge chair, and marble double-sink bathrooms with rain shower; dedicated solo but otherwise identical to SU category.



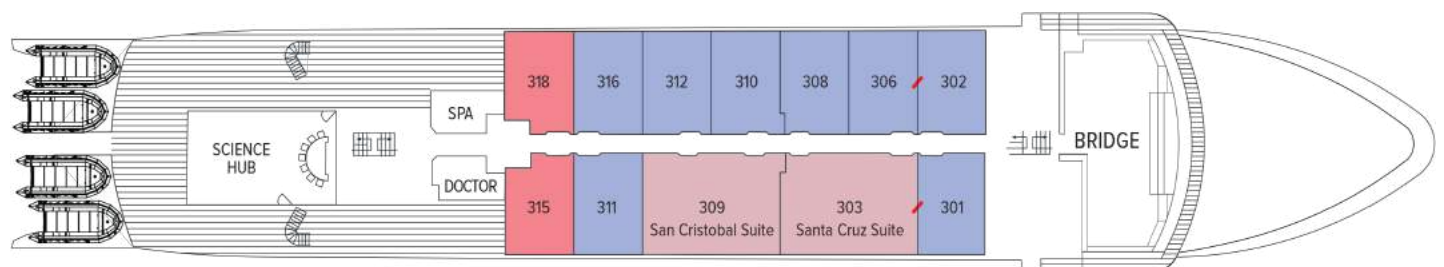
## Category IS

**Islander Suite:** #303, 309

515 sq. ft. with two panoramic windows, twin/king convertible beds, separate living areas with sofa, table and chairs, two lounge chairs, larger bathroom with both rain shower and tub. Triple occupancy with sofa made up as third bed. Third person rates are one-half the double occupancy rate. Connecting Suites: #301/303, 302/306



## Bridge Deck



# Cabin Categories    Main Deck

## Category IS

**Islander Suite: #209, 218**

515 sq. ft. with two panoramic windows, twin/king convertible beds, separate living areas with sofa, table and chairs, two lounge chairs, larger bathroom with both rain shower and tub. Triple occupancy with sofa made up as third bed. Third person rates are one-half the double occupancy rate.



## Category SU

**Guest Suite: #205/207**

280 sq. ft. with two panoramic windows, twin/king convertible beds, seating area with sofa, lounge chair, and marble double-sink bathrooms with rain shower. #203, 205-208, 210-212, 215, 220. Connecting Suites:



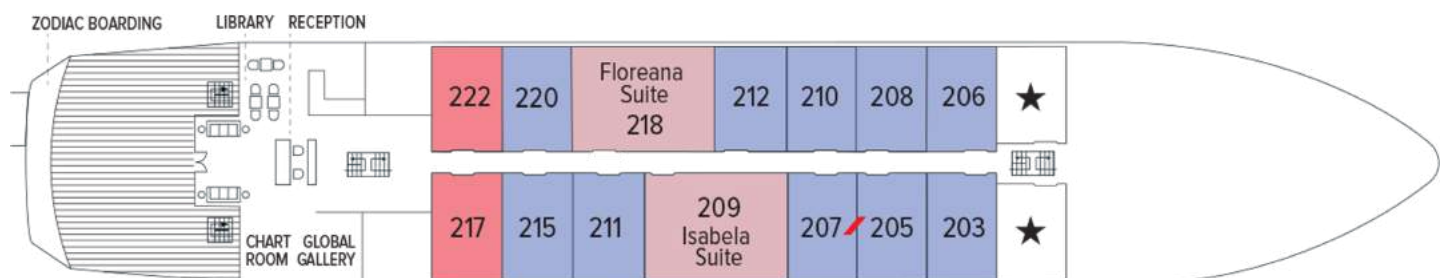
## Category SO

**Solo Suite: #217, 222**

280 sq. ft. with two panoramic windows, twin/king convertible beds, seating area with sofa, lounge chair, and marble double-sink bathrooms with rain shower; dedicated solo but otherwise identical to SU category.

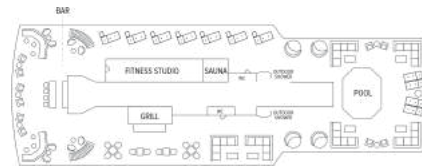


## Main Deck

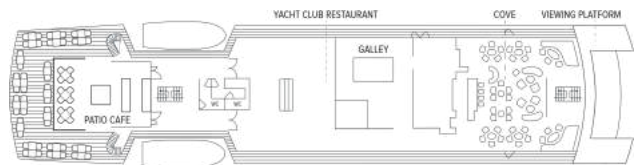


# Deck Plans

## Observation Deck

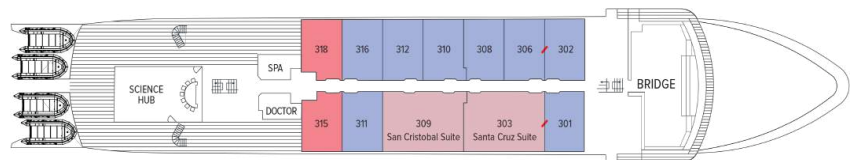


## Promenade Deck



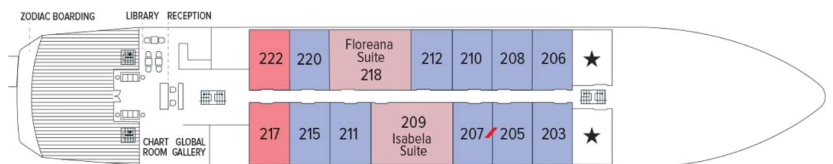
## Bridge Deck

- Category SU
- Category SO
- Category IS



## Main Deck

- Category IS
- Category SU
- Category SO



## Marina Deck





# Ship amenities

## Indoor-Outdoor Dining

Enjoy meals in the expanded al fresco Patio Café, sophisticated Yacht Club Restaurant on the Promenade Deck, or Grill on the Observation Deck, where there's also a bar and ample seating to host events. Here, guests gather for wine tastings, chocolate tastings, and Bubble-Qs—BBQs made extra celebratory with Champagne. The convenient 24-hour beverage and snack stations in the Bar and Library are other welcome amenities.



## Science Hub

Outfitted with scientific equipment, the exciting new Science Hub continues the Lindblad Expeditions-National Geographic legacy of supporting conservation and research. Equipped for underway oceanography, interactive video presentations, and an enhanced photo experience, the Science Hub is also a place for young guests in the [National Geographic Global Explorers Program](#) to experience hands-on learning.

## Public Spaces

The ship's public spaces enhance the connection to the islands. Guests will find an open Bridge, surrounding teak decks, and a forward-viewing area. Two dining areas accommodate all guests in a single seating. The Cove, which has a bar, is the setting for daily Recaps. Other ship features include a Reception area with glass doors that lead to an open teak Viewing Deck, a Plunge Pool, a Chart Room, the Global Gallery, Library, Marina, Swim Platform, and Zodiac boarding area.



## Expedition Tools

National Geographic Islander II carries a fleet of kayaks and stand-up paddleboards, a glass-bottom boat, an expanded flotilla of versatile Zodiacs, complete snorkel gear for adults and children, video microscope, and Science Hub.

The newly refitted teak-appointed marina is spacious and climate-controlled, designed for guests to comfortably get in and out of expedition gear.



## Expanded Expedition Staff

The Expedition Team, led by a veteran Expedition Leader, includes a five Naturalists, Undersea Specialist, Certified Photo Instructor, and Certified Field Educators who run our exclusive [National Geographic Global Explorers Program](#) for kids and teens.



## ***National Geographic Endeavour II***

---

**Guests**

96

**Cabins**

52

---

**Our latest and most family-friendly ship, the *National Geographic Endeavour II* is exceptionally nimble and maneuverable.**

Born in the cold waters of Patagonia, *National Geographic Endeavour II* was built for heavy seas. Now, permanently stationed in Galápagos, she comfortably sails the Equator.

A floor-to-ceiling rebuild when she repositioned to the tropics meant she could be crafted to perfectly accommodate the Lindblad style of travel. Where she previously carried 136 passengers, she now accommodates just 96 guests in 52 thoughtfully appointed cabins. She is exceptionally nimble and maneuverable,



with a shallow draft to get up close, great viewing from all public spaces, an expansive open-air observation deck, large windows in cabins and suites, and state-of-the-art tools for exploration including a glass-bottom boat, underwater cameras, video microscope, plus kayaks and stand-up paddleboards.

She replaced the beloved *National Geographic Endeavour*, which donated much of her artwork and her great spirit of camaraderie. Guests have described being aboard *National Geographic Endeavour II* as feeling like a cross between a grand floating hotel and scientific research vessel. She is beyond comfortable, and welcoming to solos, groups, and kids of all ages, and equipped for the up-close and personal explorations that makes Galápagos the trip of a lifetime.

Welcome aboard. From your first sight of the art to the left of the reception desk (part of the pioneering polar art exhibit, *Change*, installed onboard) to the sleek lines and calming neutrals, you can feel the rigors of travel drop away. Ahead: only supreme comfort and the exhilaration of discovery.

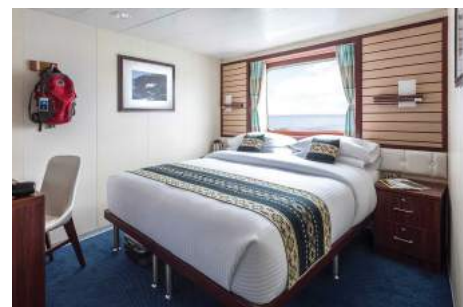


# Cabin Categories

## Category 1

**Upper Deck, Forward: #201, 202**

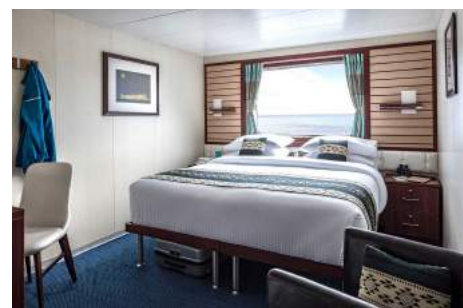
All cabins face outside with a large window, two single beds that can convert to a queen-sized bed. Furniture includes an armchair, desk, two nightstands, and a closet.



## Category 2

**Upper Deck: #211, 213-219, 221-222, 224-229**

All cabins feature two single beds that can be convert to a queen-sized bed with a large window. Furniture includes an armchair, desk, two nightstands, and a closet. Cabins 224 & 225 can accommodate a third person with a fold-down murphy bed. Cabins 226/228 and 227/229 are interlocking with a connecting door.



## Category 3

**Lounge Deck: #311, 313-319, 321, 322, 324, 326, 328, 330**

All cabins face outside with a large window, two single beds that can convert to a queen-sized bed. Furniture includes an armchair, desk, 2 nightstands and a closet. Cabins 326 & 328 can accommodate a third person with a fold-down murphy bed. Cabins 315/317, 316/318, and 320/322 are interlocking with a connecting door.



## Category 4

**Bridge Deck: #409, 411-414, 416, 418**

All cabins are outside with a large window, two single beds that can convert to a queen-sized bed. Furniture includes an armchair, desk, two nightstands, and closet. Cabins 411/413 and 416/418 are interlocking with a connecting door.



### Shared Accommodations:

Connecting cabins are perfect for families or groups of friends. In all, seven cabins can be connected. Triple and solo cabins are available too, to welcome all types of travelers.



## Suite A

**Lounge Deck, Mid-ship: #320**

Cabin features two large windows, armchair, large suite-sized bathroom, double closet, writing desk and chair, mini-fridge, two large windows and two nightstands. 2 single beds that can convert to a queen. This suite and cabin 322 are interlocking with a connecting door.



## Suite B

**Bridge Deck, Mid-ship: #420, 422**

These suites feature floor-to-ceiling windows that provide incredible views and natural sunlight. Furniture includes a sofa that converts to a single bed, a double closet, writing desk and chair, two nightstands, mini fridge, and large suite-sized bathroom. Cabins have two single beds that can be converted to a queen.



## Suite C

**Bridge Deck, Mid-ship: #415**

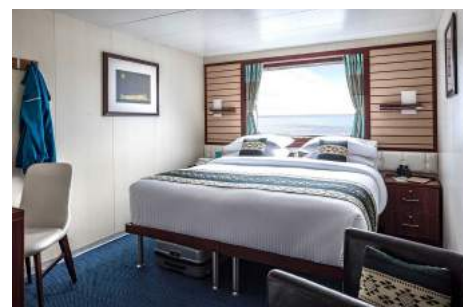
This suite is the largest cabin aboard with a separate well-appointed separate seating area. The seating area includes a sofa that converts to a single bed, writing desk, lounge chair, coffee table, armchair and mini fridge. The cabin features two single beds that convert to a queen, two nightstands, extra closet space, and a large suite bathroom.



## Category 2 Solo

**Upper Deck: #203-209**

These cabins face outside with a large window with either a wide single bed, or two singles that can convert to a queen. In the cabin you will also find an armchair, desk, two nightstands, and a closet. Equal in size and amenities to other Category 2 cabins.



## Category 3 Solo

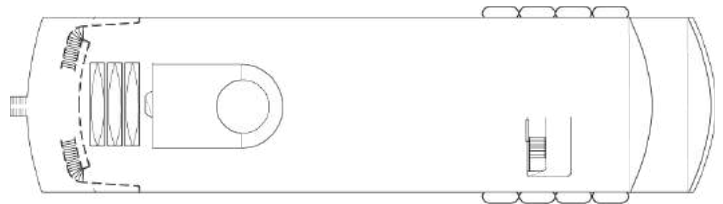
**Lounge Deck: #325, 327**

These cabins face outside with a large window and two single beds that convert to a queen. In the cabins you will also find an armchair, desk, two nightstands, and a closet. Equal in size and amenities to other category 3 cabins.



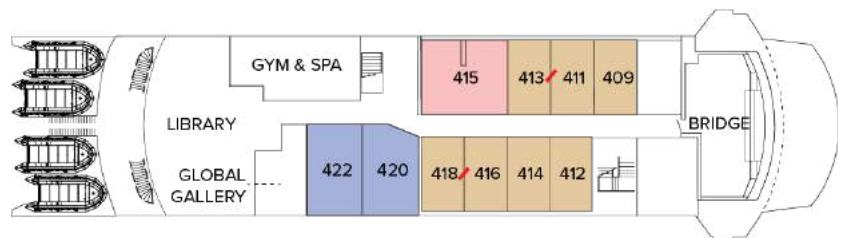
# Deck Plans

## Observation Deck



## Bridge Deck

- Category 4
- Suite B
- Suite C



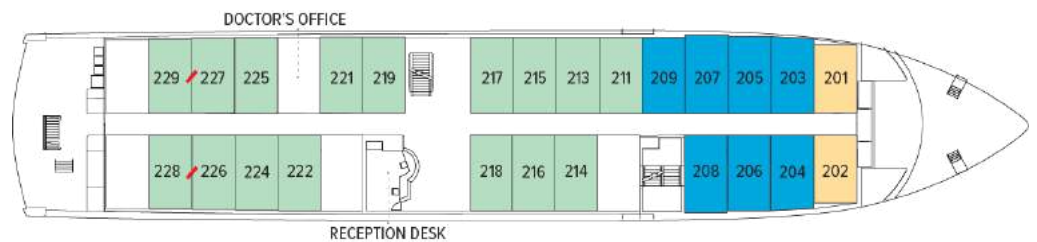
## Lounge Deck

- Category 3
- Suite A
- Category 3 Solo

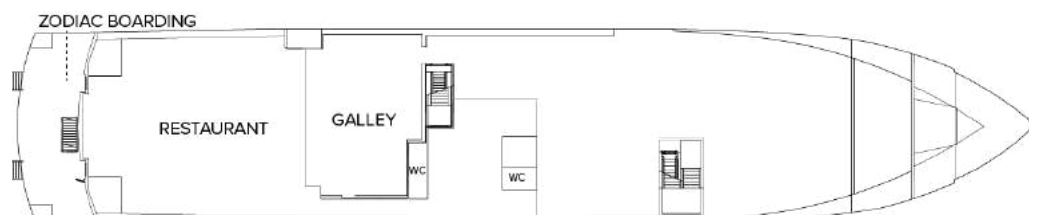


## Upper Deck

- Category 1
- Category 2
- Category 2 Solo



## Main Deck



# Ship amenities

## Public Areas

Forward lounge and bar accommodating all guests for presentations and gatherings, restaurant, large library with Mac kiosks, open-air observation deck, underwater gear area and dual Zodiac boarding platform, and “open bridge,” where guests can meet the Captain and officers and learn about navigation.

## Meals

Meals are served in the dining room or sometimes outdoors, in a single, unassigned seating with a sociable, informal atmosphere with Ecuadorian flair.

## Cabins

52 outside cabins. All feature ocean views, private facilities, climate controls, and hair dryers, plus Ethernet, Wi-Fi connections and USB ports for mobile devices. Choose from suites on two decks, plus connecting cabins and triples are available for families and friends.

## Expedition Equipment

Zodiacs to get to shore quickly, glass-bottom boat, kayaks and paddleboards for personal explorations, snorkel gear and wetsuits for both adults and children, video microscope and underwater video camera.

## Special Features

A full-time doctor, undersea specialist, Lindblad-National Geographic certified photo instructor and video chronicler.

## Wellness

A fitness center, *LEXspa* treatment room, exercise room and wellness specialists.



## Self-Disinfecting Ships

Act Clean Coat™ is a light-activated, self-disinfecting cleaning process that continuously breaks down viruses, bacteria, mold, and airborne allergens across all ship surfaces. This non-toxic, chemical-free system also helps us save over one million gallons of water each year in our cleaning procedures.





## National Geographic Gemini

---

Guests

48

Cabins

27

---

### A fully equipped Galápagos expedition ship for 48 guests

The newly christened *National Geographic Gemini* joins the Lindblad Expeditions-National Geographic Galápagos fleet with a history and heritage of small-ship expedition cruising. Launched in 2001 from the same shipyard as *National Geographic Orion*, *National Geographic Gemini* is a highly maneuverable, shallow-draft expedition ship purpose built to explore remote areas with ease.

Sailing year round with a maximum of 48 guests on weeklong voyages departing Fridays, *National Geographic Gemini* offers guests the choice of larger suites, cabins with balconies, and a mix of doubles, solos and triples.

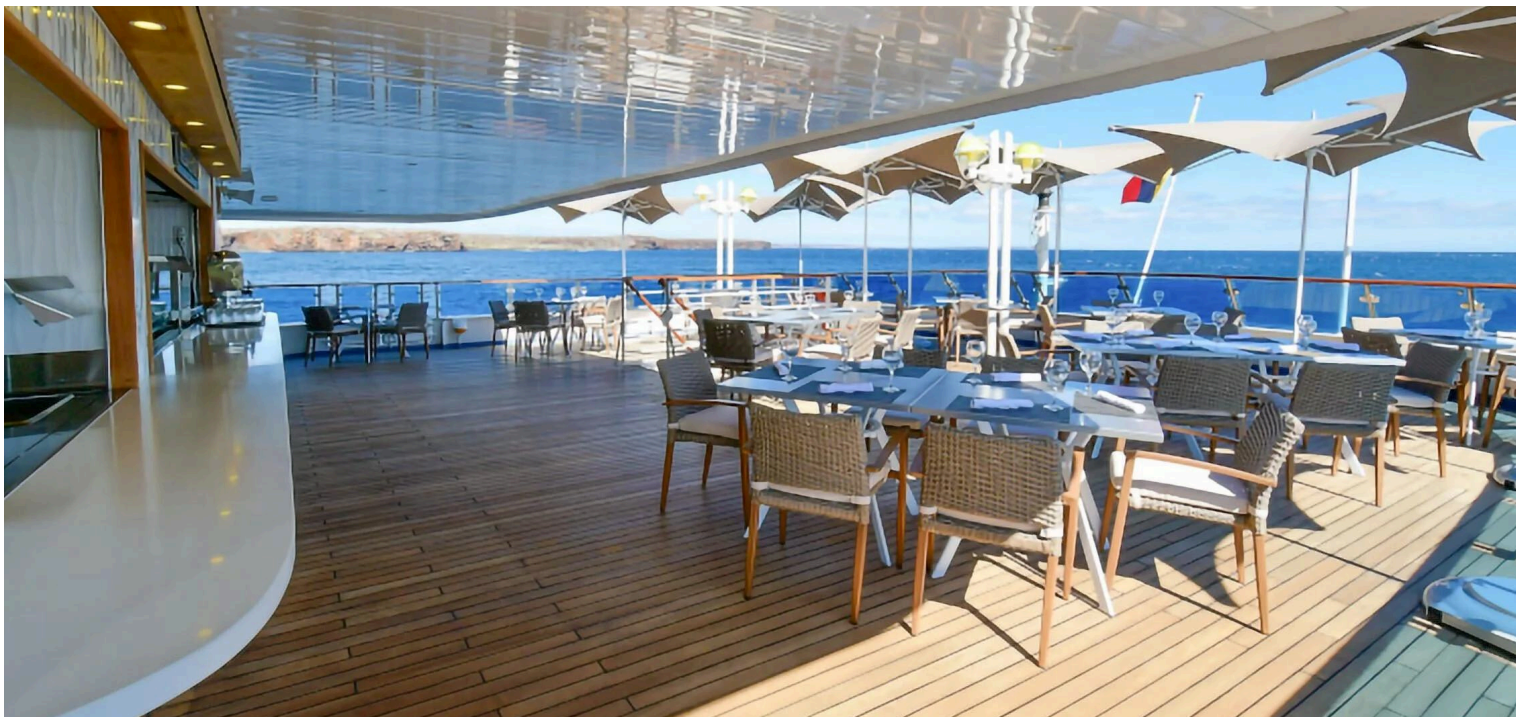
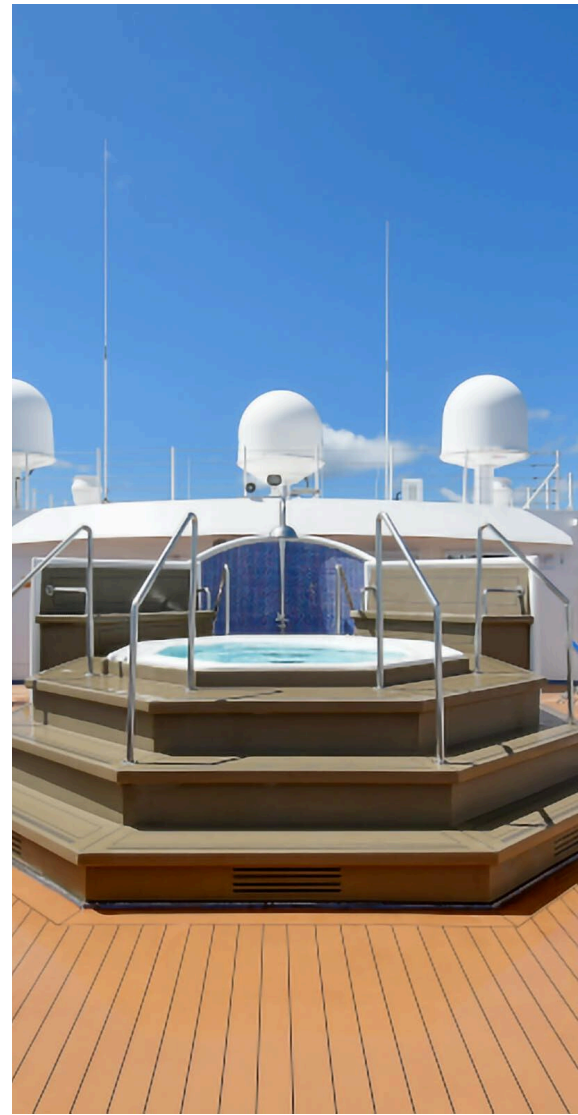


All cabins are ocean facing and with ample storage, beds that can be configured as a queen or two twins, a sofa, desk, television and a well-stocked mini fridge. Bathrooms are large and feature glass showers. Suite 601 on the Upper Deck (Category 7) is the largest in the Lindblad Expeditions-National Geographic Galápagos fleet with a separate living room, forward-facing balcony and floor-to-ceiling windows. Cabins on the Bridge Deck (Category 4 & 5S) all have private balconies with seating.

Enjoy the outdoors on the Upper Deck and Bridge Deck, which features a whirlpool hot tub, and windowed fitness center and spa. An outdoor café on the Lounge Deck accommodates all guests in a single open seating, as does the restaurant on the Marina Deck. The open, windowed lounge for presentations and informal gatherings has a large bar and well-stocked library and adjacent reception area.

Carrying a fleet of quick-to-deploy Mark VI Zodiacs, kayaks and stand-up paddleboards, the ship is well-equipped for exploring the islands and marine reserve. It is also stocked with snorkeling gear for all guests, including shortie wetsuits.

*National Geographic Gemini* provides an authentic sense of place informed by our decades-long relationships with local communities and conservation groups. Contributing to the fully immersive Ecuadorian experience on board is the passionate and knowledgeable Ecuadorian crew. Meals are designed to support the community—comprising locally sourced farm-to-table and ocean-to-table ingredients.

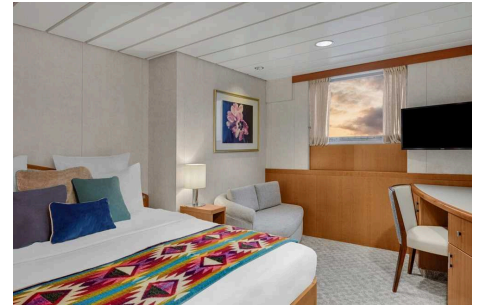


# Cabin Categories

## Category 1

**Lounge Deck: #411, 414, 415, 416**

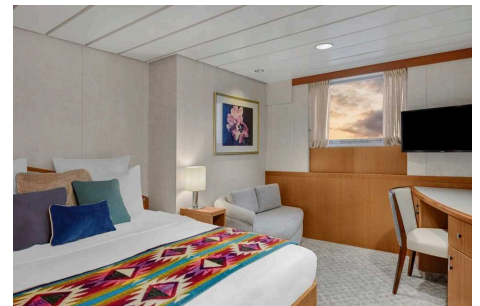
Forward cabins, outside facing with a large window, queen or two twin beds, ample storage, sitting area, desk, mini fridge and television. Bathrooms with a glass shower and amenities. 160 square feet.



## Category 2 Solo

**Lounge Deck: #401 and 402**

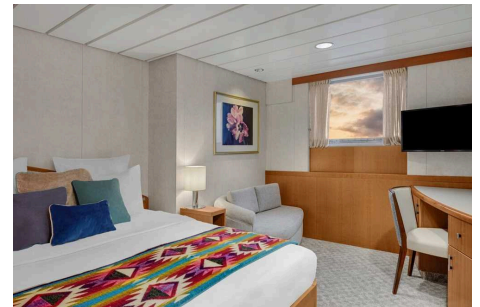
Outside facing with a large window, choice of either a queen or two twin beds, ample storage, sitting area, desk, mini fridge and television. Bathrooms with a glass shower and amenities. Equal in size and amenities to other Category 2 cabins. 160 square feet.



## Category 2

**Lounge Deck: #403-408, 410, 412**

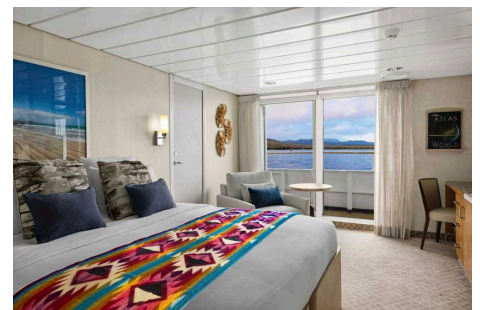
Outside facing with a large window, queen or two twin beds, ample storage, sitting area, desk, mini fridge and television. Bathrooms with a glass shower and amenities. 160 square feet.



## Category 4

**Bridge Deck: #500-508**

Outside facing with floor-to-ceiling glass doors, 50-square-foot balcony with seating, queen or two twin beds, ample storage, sitting area, desk, mini fridge and television. Bathrooms with a glass shower and amenities. 205 square feet. 503/505 and 504/506 connect. 500/503 with convertible sofa bed for triple occupancy.





## Category 5 Solo

**Bridge Deck: #509**

Outside facing with floor-to-ceiling glass doors, 50-square-foot balcony with seating, one queen bed, ample storage, sitting area, desk, mini fridge, and television. Bathrooms with a glass shower and amenities. 175 square feet.



## Category 5

**Upper Deck: #602**

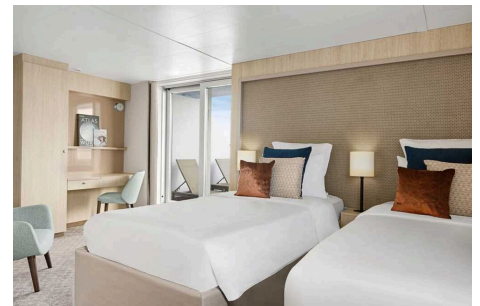
Outside facing with floor-to-ceiling glass doors, 50-square-foot balcony with seating, queen or two twin beds, ample storage, sitting area, desk, mini fridge and television. Bathrooms with a glass shower and amenities. 205 square feet. Connects to 604 as family suite.



## Category 6

**Upper Deck: #604**

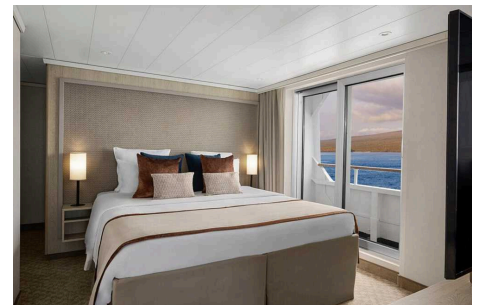
Forward facing with floor-to-ceiling glass doors, 195-square-foot forward-facing balcony with seating, queen or two twin beds, ample storage, sitting area, desk, mini fridge, and television. Bathrooms with a glass shower and amenities. 250 square feet. Connects to 602 as family suite.



## Category 7

**Upper Deck: #601**

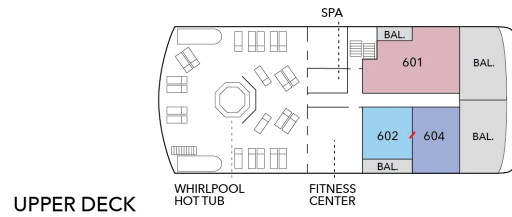
Forward facing with floor-to-ceiling glass doors, separate living room with sofa bed for triple occupancy, and 195-square-foot forward-facing balcony with seating. Bedroom with queen or two twin beds, 50-square-foot side balcony, ample storage, mini fridge, and television. Large bathroom with rain shower. 460 square feet.



# Deck Plans

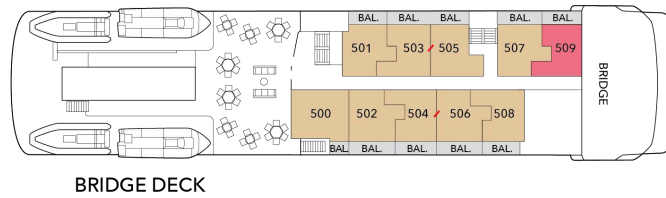
## Upper Deck

- Category 5
- Category 6
- Category 7



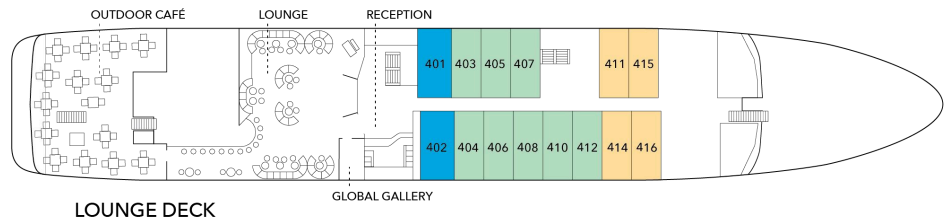
## Bridge Deck

- Category 4
- Category 5 Solo

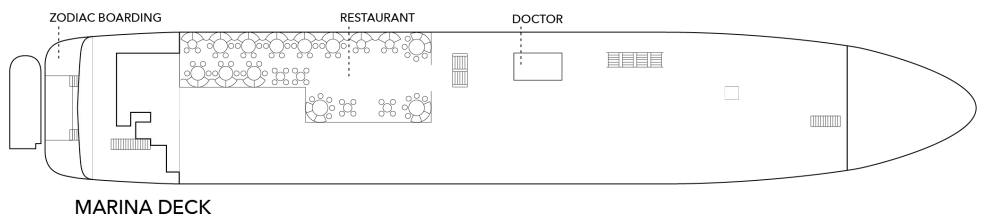


## Lounge Deck

- Category 1
- Category 2 Solo
- Category 2



## Marina Deck





# Ship amenities

## Accommodations with Balconies

National Geographic Gemini offers an array of accommodation types, including 13 cabins with private balconies. Cabins on the Bridge Deck (Category 4 & 5S) have private balconies with seating. Suite 601 on the Upper Deck (Category 7) is the largest in the Lindblad Expeditions-National Geographic Galápagos fleet with a separate living room, forward-facing balcony, side balcony, and floor-to-ceiling windows. Cabin 604, which connects with Cabin 602 for the ultimate family suite, is forward facing with a large balcony.

## Open-Air Decks

The Upper Deck features an outdoor shower, whirlpool hot tub with adjacent shaded seating area and a windowed fitness center and spa perfect for relaxing. The outdoor café on the Lounge Deck can accommodate all guests in a single seating.

## In Good Company

Explore Galápagos in the company of veteran Lindblad Expeditions-National Geographic expedition staff, a veteran Expedition Leader, Undersea Specialist, Certified Photo Instructor, and licensed naturalists. Staff are certified as Field Educators to offer the National Geographic Explorers-in-Training program for kids and teens.

**Note:**

All images are for reference only. The final ship design will evolve following a multi-million-dollar renovation.

## Special Offers

### SPECIAL SAVINGS

Receive savings of up to 20% on select voyages as indicated on our special offer page. Applicable savings will be deducted from cabin fare after any additional applicable savings with the purchase of cabin fare. Receive 50% off the deposit due at the time of booking on select 2026 and 2027 voyages outside of final payment. Remaining deposit balance is due at the time of final payment. Additional restrictions may apply. Offers valid on new bookings only for select 2026 and 2027 departures, subject to availability and offer may be withdrawn at any time without prior notice, not applicable on airfare or extensions, and may not be combined with other offers. Call for details.

### SUITE EXCLUSIVES

Spacious living areas and incredible views immerse you in the beauty of your marine surroundings. Our new Suite Exclusives package helps make your voyage all the more memorable. [Learn more](#)

### CELEBRATE LIFE'S MILESTONES

Celebrate a milestone with a group of eight or more and enjoy a special amenity package including: 5% savings on voyage fares, custom group photo, US\$150 shipboard credit for the group, and other special gifts. Milestone celebration to be communicated at time of booking.

### SAVE 5% TRAVELING AS A GROUP

Save 5% when traveling as a group of eight or more people. Valid on voyage fares only and not applicable on extensions or airfare. Deposit, final payments, and cancellation policies for group travel vary from our

regular policies. Valid for new bookings only, subject to availability, and may not be combined with other offers. Call for details.

### PAY BY DEBIT: EARN A \$100 ONBOARD CREDIT

The \$100 onboard credit offer is applied after the final payment and requires 85% of the cost of the voyage to be placed on a debit card. Maximum of one \$100 onboard credit per cabin. The \$100 onboard credit is a non-refundable, non-transferable credit that can be used for various onboard purchases such as global gallery and spa treatments. It has no cash value, cannot be refunded if not fully utilized, and will be forfeited if not fully redeemed by the end of the voyage. This offer is combinable with other offers. If the booking is altered or canceled, the onboard credit may be forfeited, and it cannot be transferred if the booking is moved to another guest. Lindblad Expeditions reserves the right to modify or cancel the offer without prior notice. Offer applies to Lindblad Expeditions' owned ships only. Offer valid only for Debit Cards issued in the United States for payments made from the United States.

### COMBINING OFFERS

Certain offers may be combinable, up to two savings opportunities, except where noted otherwise. For example, travel with a group of 8 or more on back-to-back expeditions, and take advantage of both savings.

## Included in price

All accommodations aboard ship or in hotels per itinerary; all meals as indicated in the itinerary, both aboard and onshore; beer, wine, cocktails, liquors and spirits aboard the ship (except certain premium brands which are available for purchase); hors d'oeuvres, 24-hour access to snacks, premium coffees and teas, non-alcoholic beverages, and filtered water; excursions; arrival/departure transfers are included for hotel arrangements made through National Geographic-Lindblad Expeditions; gratuities in Guayaquil, and Quito to local guides, drivers and tour escort; exploration tools curated to destination, such as Zodiacs, stand-up paddleboards, kayaks, snorkeling equipment (including wetsuits, masks, and fins); guidance and company of our leading expedition staff; assistance by the Lindblad Expeditions-National Geographic Certified Photo Instructor; presentations by expedition staff and expert guest speakers; Basic Wi-Fi aboard ship; complimentary reusable water bottle; onboard physician consultations; morning stretch classes and 24-hour access to exercise equipment; 24-hour access to lounge, observation decks, library, and other shared spaces; park and site entrance fees, special access permits, and port taxes. Unused services or items included in our programs are non-refundable.

## Not included in price

Airfare\* (except flights when indicated as included); pre- and post-expedition extensions; additional hotel nights (except when indicated as included); crew gratuities; private transfers; laundry, spa treatments, scuba diving, and phone services; travel protection plans; and passport, visa, and immigration fees.

\*Recommended flight costs include flight(s) that take place during the date range of your trip to transport travelers from one itinerary destination to another. This cost also includes ground transportation, luggage transfer, and airport assistance. If you prefer to arrange your own flights privately, have alternate means of transport, or wish to modify at a later time, please contact an Expedition Specialist at 1.833.400.0831

Additional costs associated with medical services outside onboard physician consultation.

## Travel protection plan

We strongly recommend our guests to take advantage of our Travel Protection Plan. This plan offers comprehensive coverage to protect you from cancellation fees, costs incurred due to trip delays/interruption, damage or loss of baggage, medical assistance, and evacuation during your travels. Our Travel Protection Plan is available for U.S. residents only, and may be purchased any time prior to final payment due date. Travel Protection premiums are non-refundable once plan is purchased. Learn more about our Travel Protection "Plus" Plan: <https://www.expeditions.com/terms-conditions/travel-protection-plan/>

## Cancellation policy

Review our cancellation policy: <https://www.expeditions.com/cancellation-policy/>