

 Galápagos & South America  
1° 8' N 83° 34' W

## Galápagos Escape: A 7-Day Voyage

Departs Tuesdays year round. Explore Darwin's islands in one action-filled week aboard the elegant *National Geographic Islander II*. Witness the iconic wildlife that sparked the theory of evolution by natural selection, snorkel pristine waters teeming with sea lions and sea turtles, and hike black-sand beaches and lush highlands. As with our classic, 10-day expeditions, honed over more than 50 years, each voyage is crafted to offer a diverse perspective of the archipelago with multiple adventures daily on land and undersea.

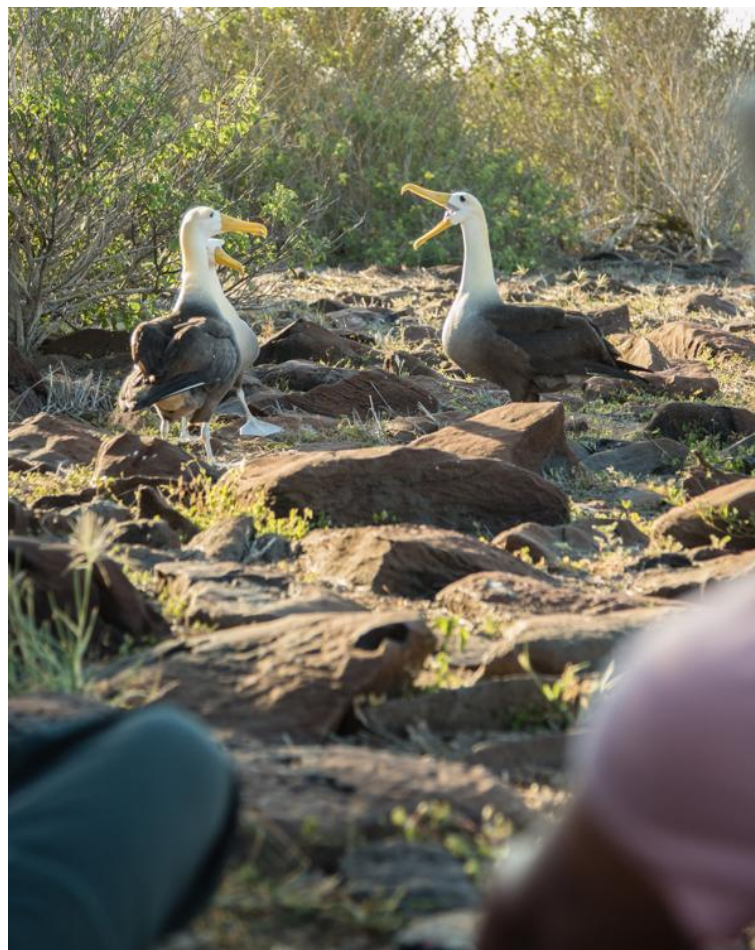
From  
**\$ 6,864** / per person  
Does not include flights

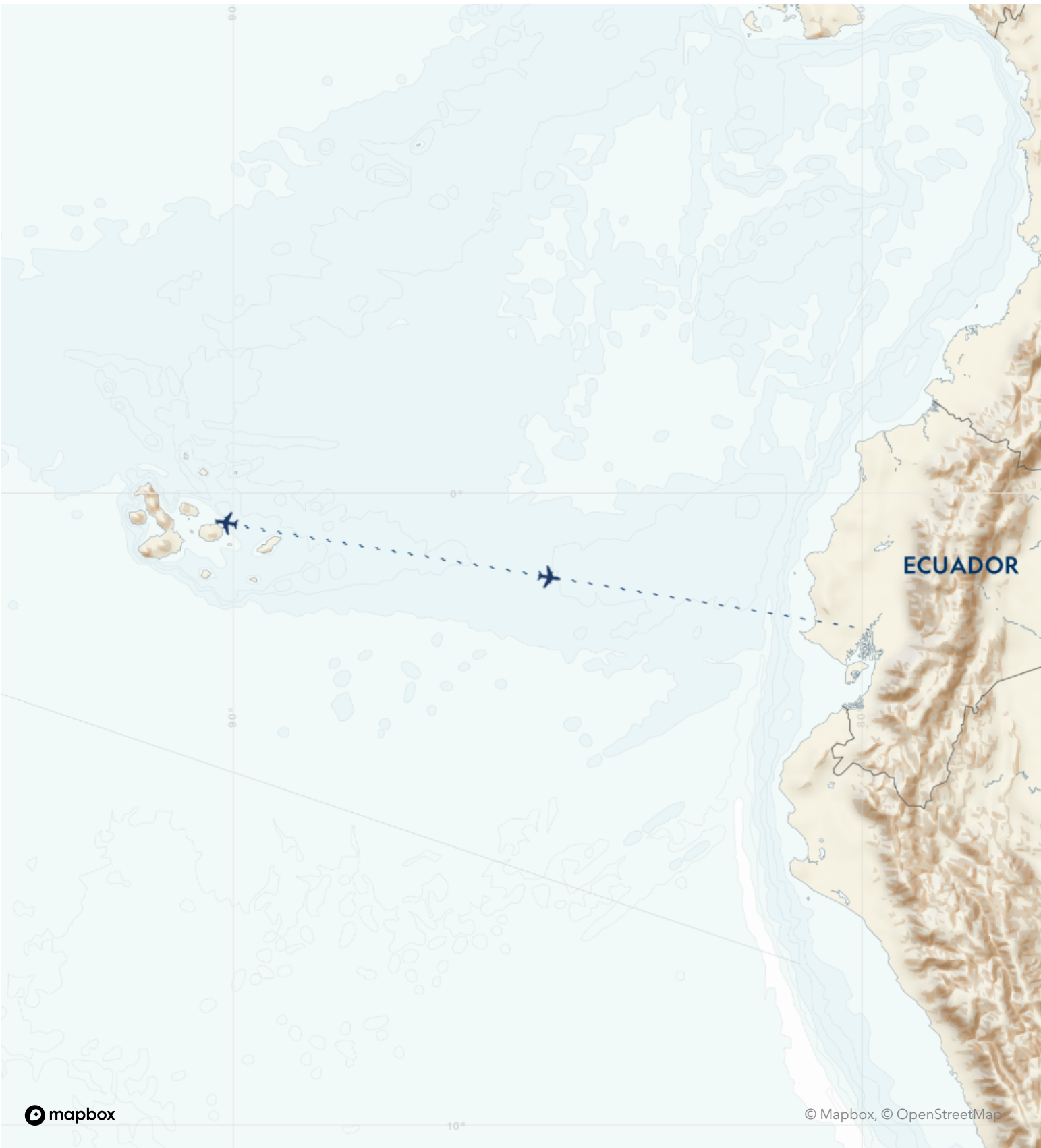
 <b>DATES</b> Year round	 <b>DURATION</b> 8 Days
 <b>SHIPS</b> <i>National Geographic Islander II</i>	
 <b>STARTS AT</b> Quito or Guayaquil, Ecuador	→  <b>ENDS AT</b> Quito or Guayaquil, Ecuador

**NOTE:** This expedition is 7 days long, departing on Tuesdays. It is also available as an 8-day expedition, departing Thursdays and Saturdays. [More details](#) .

## Highlights

- ★ Experience all the Galapagos has to offer in one week with departures on Tuesday
- ★ Snorkel and kayak among colorful fish, sea turtles, penguins, and playful sea lions, and walk among colonies of wildlife and seabirds unfazed by your presence
- ★ Maximize your time in the islands with options for exploration every day including hiking, kayaking, snorkeling, and more
- ★ Add a three-night post-expedition extension in Quito, Ecuador





## Day by day

### ■ DAY 1

#### Guayaquil or Quito, Ecuador

Arrive in Ecuador, either in Quito, Ecuador's capital city in the Andes, or in the coastal city of Guayaquil, and take an included transfer to your hotel for an overnight stay. Both cities are well-served by international carriers, and Galápagos flights start and end in Quito with a stop in Guayaquil. Guests in Guayaquil stay at the Hotel del Parque, a 44-room Relais & Châteaux hotel set along the river in lush tropical gardens. In Quito guests have the choice of several hotels, including a convenient airport hotel. You may opt to reserve [additional hotel nights](#) and tours in Quito or Guayaquil.

**Arrival Time:** Anytime.

**Arrival City:** Quito or Guayaquil, Ecuador

### ◇ DAY 2

#### Quito or Guayaquil / Galápagos Islands / Embark Ship

Fly to Baltra in the center of Galápagos, a little world unto itself in the Tropical Pacific, where you'll be welcomed by your naturalist staff as you begin exploring the islands.

**Meals included:** breakfast, lunch, dinner

### ◇ DAYS 3-5

#### Galápagos Islands

Listed below is a sample of islands you may visit during your expedition. Expeditions begin and end at Isla Santa Cruz and include a careful selection of diverse islands. No two days are alike. Each itinerary offers an optimal balance of wildlife, landscapes and experiences. All ship itineraries are subject to Galápagos National Park regulations.

**Santa Fe:** Snorkel and kayak in the secluded cove at

Barrington Bay. On shore, a trail leads you through the largest cactus trees in Galápagos. The Santa Fe land iguana is found only on this island, where Galápagos hawks are also thriving once again.

**Plaza Sur:** Sea lions greet you at South Plaza, an uplifted block carpeted in salt-loving succulents and teeming with wildlife, including a noisy group of bachelor sea lions and a population of land iguanas.

**Santiago:** Hike over the smooth pahoehoe lava and admire spatter cones, little miniature hornitos and the wild riot of black lava at Sullivan Bay, the result of an eruption recorded by passing buccaneers in 1897. Snorkel and explore by kayak and Zodiac the crystalline water surrounding Sombrero Chino. Keep a keen eye for the Galápagos penguin, sometimes spotted along the coast.

**Genovesa:** Sail north across the Equator to the remote northern realm of the Galápagos, bathed in warmer tropical waters and home to the red-footed boobies, Nazca boobies, swallow-tailed gulls, great frigate birds and other nesting seabirds. Paddle and kayak along the cliffs of this flooded caldera, where Galápagos fur seals and sea lions haul out to rest.

**Santa Cruz:** Journey to the lush, green highlands, where you'll see giant Galápagos tortoises roaming wild at a local ranch. Continue to Baltra for a flight back to the mainland.

**Meals included:** lunch, breakfast, dinner

### ◇ DAY 6

#### Galápagos Islands / Disembark Ship / Guayaquil or Quito

Disembark this morning for a return flight to the mainland, where you'll transfer to Hotel del Parque in Guayaquil. In Quito there are [several hotel options](#). The afternoon and evening are at

your leisure. You may be able to take advantage of overnight flights home. Ask your expedition specialist about joining a culturally rich post-voyage extension to [Quito and Otavalo](#), a celebrated market town.

Meals included: breakfast

## ■ DAY 7

### Quito or Guayaquil

After breakfast, transfer to the airport and board flights home, unless you have arranged for additional nights or an extension.

**Departure Time:** Anytime on day 7, or after 7:00 p.m. local time on day 6.

**Departure City:** Quito or Guayaquil

**Expedition**

Quito or Guayaquil, Ecuador → Quito or Guayaquil, Ecuador

**2025 Departure Dates**

Aboard *National Geographic Islander II*

07 Jan	21 Jan			
04 Feb	18 Feb			
04 Mar	18 Mar			
01 Apr	15 Apr	29 Apr		
13 May	27 May			
10 Jun	24 Jun			
08 Jul	22 Jul			
05 Aug	19 Aug			
30 Sep				
14 Oct				
11 Nov	25 Nov			
09 Dec				

**2026 Departure Dates**

Aboard *National Geographic Islander II*

06 Jan	20 Jan			
03 Feb	17 Feb			
03 Mar	17 Mar	31 Mar		



## ***National Geographic Islander II***

---

Guests	Suites
48	26

---

### **A New Ship with Just 26 Spacious Staterooms and Suites Sailing the Galápagos Islands**

Lindblad Expeditions is thrilled to welcome the National Geographic Islander II to our fleet. Sleek and elegant, she will sail year-round in the Galápagos Islands and elevate the guest experience to an entirely new level.

National Geographic Islander II is a gracious expedition vessel that feels like a private yacht. With only 26 staterooms and suites, and accommodating just 48 guests, she sails with a 1:1 guest-to-crew ratio.

Special features include teak decks, indoor-outdoor dining options, an impressive observation deck, and new amenities like a climate-controlled Marina and a dedicated Science Hub.

National Geographic *Islander II* provides an authentic sense of place, drawing on our decades of partnering with local communities and conservation groups. Contributing to the fully immersive Ecuadorian experience on board are Ecuadorian staff and locally sourced and sustainable farm-to-table and ocean-to-table culinary ingredients, as well as artisan spa elements and handcrafted textiles, art, and décor all regionally created.

### An authentic, immersive experience in the Galàpagos

The *National Geographic Islander II* celebrates Lindblad's deep connection to the islands, Ecuador, and its people with a deeply immersive and truly unique Ecuadorian cultural experience. The carefully considered food and beverage program highlights the four regions of Ecuador with locally sourced farm-to-table ingredients. Regional ingredients can even be found in spa products. From Ecuadorian shipboard staff to artwork, textiles, and décor created by local artists and artisans and Ecuadorean music heard throughout the ship, guests will experience the beauty and wonder of Ecuador both on and off the ship.





# Cabin Categories Bridge Deck

## Category SU

**Guest Suite: #301, 302, 306, 308, 310, 311, 312, 316**

280 sq. ft. with two panoramic windows, twin/king convertible beds, seating area with sofa, lounge chair, and marble double-sink bathrooms with rain shower. #301, 302, 306, 308, 310-312, 316. #312 & #316 are triple occupancy with sofa made up as third bed. Third person rates are one-half the double occupancy rate. Connecting Suites: #301/303, 302/306



## Category SO

**Solo Suite: #315, 318.**

280 sq. ft. with two panoramic windows, twin/king convertible beds, seating area with sofa, lounge chair, and marble double-sink bathrooms with rain shower; dedicated solo but otherwise identical to SU category.



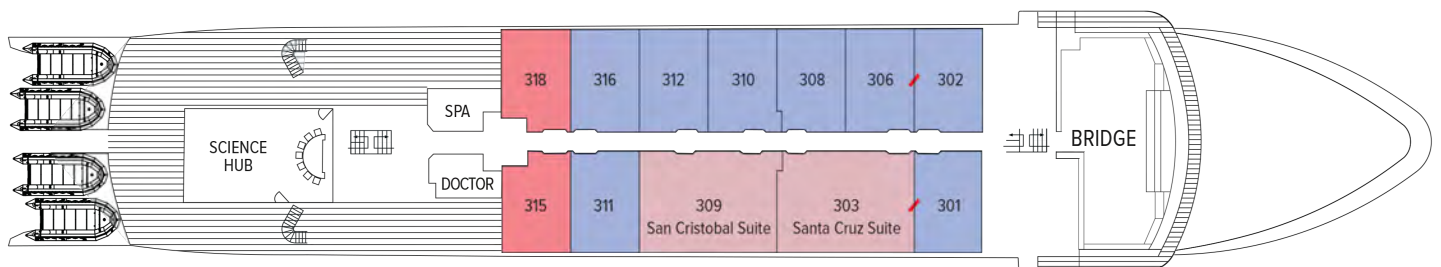
## Category IS

**Islander Suite: #303, 309**

515 sq. ft. with two panoramic windows, twin/king convertible beds, separate living areas with sofa, table and chairs, two lounge chairs, larger bathroom with both rain shower and tub. Triple occupancy with sofa made up as third bed. Third person rates are one-half the double occupancy rate. Connecting Suites: #301/303, 302/306



### Bridge Deck



# Cabin Categories Main Deck

## Category IS

**Islander Suite: #209, 218**

515 sq. ft. with two panoramic windows, twin/king convertible beds, separate living areas with sofa, table and chairs, two lounge chairs, larger bathroom with both rain shower and tub. Triple occupancy with sofa made up as third bed. Third person rates are one-half the double occupancy rate.



## Category SU

**Guest Suite: #205/207**

280 sq. ft. with two panoramic windows, twin/king convertible beds, seating area with sofa, lounge chair, and marble double-sink bathrooms with rain shower. #203, 205-208, 210-212, 215, 220. Connecting Suites:



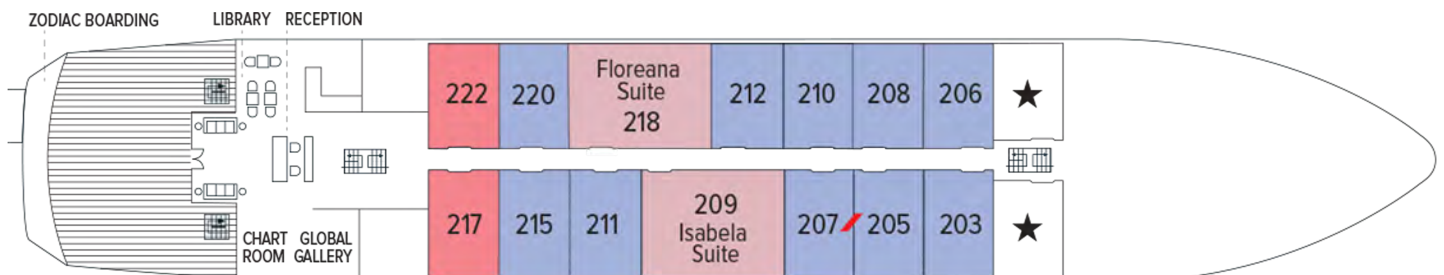
## Category SO

**Solo Suite: #217, 222**

280 sq. ft. with two panoramic windows, twin/king convertible beds, seating area with sofa, lounge chair, and marble double-sink bathrooms with rain shower; dedicated solo but otherwise identical to SU category.

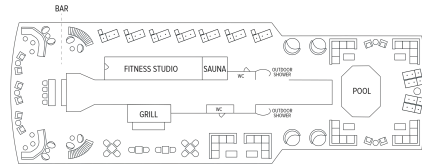


### Main Deck

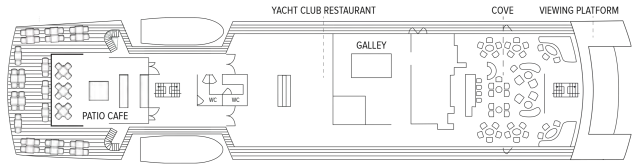


# Deck Plans

## Observation Deck

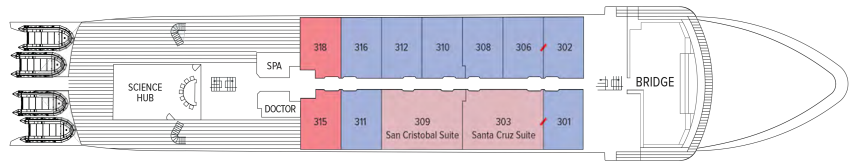


## Promenade Deck



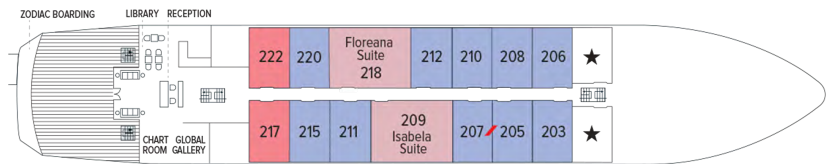
## Bridge Deck

- Category SU
- Category SO
- Category IS



## Main Deck

- Category IS
- Category SU
- Category SO



## Marina Deck



# Ship amenities

## Indoor-Outdoor Dining

Enjoy meals in the expanded al fresco Patio Café, sophisticated Yacht Club Restaurant on the Promenade Deck, or Grill on the Observation Deck, where there’s also a bar and ample seating to host events. Here, guests gather for wine tastings, chocolate tastings, and Bubble-Qs—BBQs made extra celebratory with Champagne. The convenient 24-hour beverage and snack stations in the Bar and Library are other welcome amenities.



## Science Hub

Outfitted with scientific equipment, the exciting new Science Hub continues the Lindblad Expeditions-National Geographic legacy of supporting conservation and research. Equipped for underway oceanography, interactive video presentations, and an enhanced photo experience, the Science Hub is also a place for young guests in the [National Geographic Global Explorers Program](#) to experience hands-on learning.

## Public Spaces

The ship’s public spaces enhance the connection to the islands. Guests will find an open Bridge, surrounding teak decks, and a forward-viewing area. Two dining areas accommodate all guests in a single seating. The Cove, which has a bar, is the setting for daily Recaps. Other ship features include a Reception area with glass doors that lead to an open teak Viewing Deck, a Plunge Pool, a Chart Room, the Global Gallery, Library, Marina, Swim Platform, and Zodiac boarding area.



## Expedition Tools

National Geographic Islander II carries a fleet of kayaks and stand-up paddleboards, a glass-bottom boat, an expanded flotilla of versatile Zodiacs, complete snorkel gear for adults and children, video microscope, and Science Hub.

The newly refitted teak-appointed marina is spacious and climate-controlled, designed for guests to comfortably get in and out of expedition gear.



## Expanded Expedition Staff

The Expedition Team, led by a veteran Expedition Leader, includes a five Naturalists, Undersea Specialist, Certified Photo Instructor, and Certified Field Educators who run our exclusive [National Geographic Global Explorers Program](#) for kids and teens.

## Special Offers

### GIFT OF EXPLORATION: \$500 CREDIT

Book from December 3, 2024, to March 4, 2025. Receive a credit of \$500 per person on select departures, deducted from cabin fare prior to any additional applicable savings with the purchase of cabin fare. Valid for new bookings only on select departures, subject to availability, not applicable on airfare or extensions and may not be combined with other offers. Call for details.

### GIFT OF EXPLORATION: UP TO 40% SOLO SAVINGS

Book from December 3, 2024, to March 4, 2025. Save 25% or 40% on solo cabins on select departures. Solo savings are subject to availability. Other expeditions may be available with a solo saving. Not applicable on airfare or extensions and may not be combined with other offers. A full list of solo savings is available via expeditions.com or call for details.

### GIFT OF EXPLORATION: ADDITIONAL UP TO 10% SAVINGS WHEN YOU PAY IN FULL

Book from December 3, 2024, to March 4, 2025. Save an additional 5% or 10% on the cabin fare on select departures when you pay in full at time of booking. To qualify for the discount, non-refundable payment in full is due at the time of booking. Valid for new bookings only on select departures, subject to availability, not applicable on airfare or extensions and may not be combined with other offers. Call for details.

### SUITE EXCLUSIVES

Spacious living areas and incredible views immerse you in the beauty of your marine surroundings.

Our new Suite Exclusives package helps make your voyage all the more memorable. [Learn more](#)

### SAVE 5% TRAVELING AS A GROUP

Save 5% when traveling as a group of eight or more people. Valid on voyage fares only and not applicable on extensions or airfare. Deposit, final payments, and cancellation policies for group travel vary from our regular policies. Valid for new bookings only, subject to availability, and may not be combined with other offers. Call for details.

### COMBINING OFFERS

Certain offers may be combinable, up to two savings opportunities, except where noted otherwise. For example, travel with a group of 8 or more on back-to-back expeditions, and take advantage of both savings.

## Included in price

All accommodations aboard ship or in hotels per itinerary; all meals as indicated in the itinerary, both aboard and onshore; beer, wine, cocktails, and spirits aboard the ship (except certain super premium brands which are available for purchase); hors d'oeuvres, 24-hour access to snacks, premium coffees and teas, non-alcoholic beverages, and filtered water; excursions and airport transfers to and from recommended flights, as indicated in the itinerary; exploration tools curated to destination, such as Zodiacs, stand-up paddleboards, kayaks, snorkeling equipment (including wetsuits, masks, and fins); guidance and company of our leading expedition staff; assistance by the Lindblad Expeditions-National Geographic Certified Photo Instructor; presentations by expedition staff and expert guest speakers; one hour of Wi-Fi per person per day aboard ship; complimentary reusable water bottle; services of a physician; morning stretch classes and 24-hour access to exercise equipment; 24-hour access to lounges, observation decks, library, and other shared spaces; park and site entrance fees, special access permits, and port taxes. Unused services or items included in our programs are non-refundable.

## Not included in price

Airfare (except flights when indicated as included); pre- and post-expedition extensions; additional hotel nights (except when indicated as included); crew gratuities; private transfers; laundry, spa treatments, and phone services (except when indicated as included); travel protection plans; and passport, visa, and immigration fees.

## Travel protection plan

We strongly recommend our guests to take advantage of our Travel Protection Plan. This plan offers comprehensive coverage to protect you from cancellation fees, costs incurred due to trip delays/interruption, damage or loss of baggage, medical assistance, and evacuation during your travels. Our Travel Protection Plan is available for U.S. residents only, and may be purchased any time prior to final payment due date, Travel Protection premiums are non-refundable once plan is purchased. Learn more about our Travel Protection "Plus" Plan: <https://www.expeditions.com/terms-conditions/travel-protection-plan/>

---

## Cancellation policy

Review our cancellation policy: <https://www.expeditions.com/cancellation-policy/>