

Mediterranean, Mediterranean & Europe  
42° 39' N 18° 5' E

## Mediterranean Gems: Southern Italy and Sicily aboard *Sea Cloud*

Set sail aboard the four-masted *Sea Cloud* on a voyage across the Adriatic to the shores of southern Italy and Sicily. Marvel at ornate cathedrals and baroque buildings, explore great sites of antiquity—from renowned Pompeii to the less-visited Greek temples of Paestum—and meander through cliff-top towns, soaking up breathtaking views. Stand on deck and watch the orchestrated frenzy of crew members going aloft in the ship's web of riggings to hand-set 30 sails.

From

**\$ 19,178** / per person  
Does not include flights



### DATES

Jun and Sep



### DURATION

11 Days



### SHIPS

*Sea Cloud*



### STARTS AT

Naples, Italy



### ENDS AT

Dubrovnik,  
Croatia



## Highlights

- ★ In Sicily, explore the baroque city of Lecce, the medieval island town of Ortigia, and enjoy a private lunch at Castello degli Schiavi—an 18th-century castle used in *The Godfather* films
- ★ See the Amalfi Coast, with its pastel-colored buildings and stunning vistas
- ★ Visit Pompeii, abruptly destroyed by Vesuvius in the year A.D. 79, and witness its extraordinarily well-preserved homes
- ★ Savor time at sea sailing aboard *Sea Cloud*, the world's most beautiful tall ship







## Day by day

### ■ DAY 1

#### Naples, Italy / Embark Ship

Arrive in Naples and transfer from the airport to the historic *Sea Cloud* in the late afternoon. Embark the ship and cast off, sailing across the Bay of Naples.

**Arrival Time:** Arrive before 4:00 p.m. local time.

**Arrival City:** Naples, Italy

**Meals included:** dinner

### ◇ DAY 2

#### At Sea / Paestum

Marvel as *Sea Cloud's* billowing sails are raised the old-fashioned way, by hand, and the ship heads across the Bay of Naples this morning.

Anchoring off the town of Agropoli this afternoon, we drive to Paestum, a UNESCO World Heritage site with some of the finest and best-preserved Greek temples anywhere. Founded around 600 B.C. by Greeks from Sybaris and called Poseidonia, it became a thriving city. Today, the three magnificent Doric temples—known as the Temple of Neptune, the “Basilica” of Hera, and the Temple of Ceres—can be explored up close. The Temple of Neptune (a misnomer, as it was likely dedicated to Hera) is especially intact and allows visitors to imagine what it must have been like 2,500 years ago. It is large and graceful, with elegant rows of columns. The nearby museum has a superb collection of statues, paintings, and reliefs from the site, many of them richly evocative in how they depict life in ancient times. After exploring Paestum, we return to *Sea Cloud* and spend the afternoon sailing the Tyrrhenian Sea.

**Meals included:** breakfast, lunch, dinner

### ◇ DAY 3

#### Salerno / Pompeii

Spend time exploring the historic city center of Salerno. Marvel at the 11th century Duomo of Salerno—a magnificent cathedral dedicated to Saint Matthew—and the gorgeous landscaped garden of Villa Comunale di Salerno. Or opt to visit the UNESCO-listed site of Pompeii, a once thriving city buried in pumice and ash when Vesuvius erupted in A.D. 79 that would not be rediscovered for 1,500 years. Pliny the Younger wrote, “Darkness fell, not the dark of a moonless or cloudy night, but as if the lamp had been put out in a dark room.” Walking the 2,000-year-old streets, we explore remarkably preserved villas, the forum, the splendid amphitheater (which seated 12,000), and temples.

**Meals included:** breakfast, lunch, dinner

### ◇ DAY 4

#### Amalfi / At Sea

This morning, we visit Amalfi. This storied town, part of the UNESCO World Heritage site that comprises the entire Amalfi Coast, has a glorious aspect, with pastel-hued houses clinging to the steep-sided mountains that comprise this indented stretch of coastline. Its pleasures are many: strolling the waterfront, with its marina and shops; visiting the ornate cathedral, with bronze doors dating from 1066; and just wandering the winding streets and alleyways to make your own discoveries. Spend the afternoon sailing.

**Meals included:** breakfast, lunch, dinner

### ◇ DAY 5

#### Lipari / Stromboli / At Sea

The Aeolian Islands are not only famous for the winds of the god Aeolus, but also for some of the most well-known classical volcanoes. We set

sails in the morning, anchoring for the afternoon at Lipari. Here we go ashore for a drive around the perimeter of the entire island, with spectacular views of the other Aeolian volcanoes, before returning to the main town. We visit the small but surprising archeological museum that has an extensive collection of Neolithic artifacts made from the local obsidian, which was also the foundation of the island's prosperity during the Greco-Roman era. This evening, we have dinner on deck as *Sea Cloud* cruises the 25 miles to Stromboli, and with a little luck, we see some of the pyrotechnics of this active volcano.

**Meals included:** breakfast, lunch, dinner

◇ DAY 6

## Taormina

In the wee hours of the morning, we pass through the narrow Strait of Messina, which separates Sicily from the "boot" of Italy. It is the purported location of Homer's monsters Scylla and Charybdis, the rock and the hard place through which Odysseus had to sail. Later this morning, we drive up to the beautiful town of Taormina, perched 250 meters above the sea. With Mount Etna dominating to the south, this medieval town boasts the pedestrian-friendly Corso Umberto, lined with exquisite buildings, and one of the world's most interesting cultural sites: the Greco-Roman Theater. This remarkable theater was built right into the cliffside, overlooking the vast sea below, in the third century B.C. Enjoy a special lunch at a privately owned castle, the Castello degli Schiavi. This impressive 18th-century home was the setting for many scenes in *The Godfather* films, and we meet members of the family that owns it and explore the extensive buildings and grounds. Return to *Sea Cloud*, which has been at anchor under the watchful gaze of Mount Etna.

**Meals included:** breakfast, lunch, dinner

◇ DAY 7

## Siracusa

Siracusa was the great rival to Athens, and its archaeological park features one of the largest theaters of antiquity. Its 15,000 seats are hewn out of bedrock, and the theater is still in use today. We also visit the nearby limestone quarry, the cave of "Dionysus' Ear," and the Roman amphitheater before returning to *Sea Cloud* for lunch. The afternoon features a walk through the medieval island town of Ortigia. The town is magical, with numerous little piazzas and narrow alleys, but the main feature is the Duomo, or Cathedral, which was built from the ruins of the ancient Temple of Athena. The history of Sicily can be told in the walls of this incredible construction. Enjoy time to explore on your own, if desired.

**Meals included:** breakfast, lunch, dinner

◇ DAY 8

## At Sea

Weather permitting, we spend the day with sails unfurled in the Ionian Sea, sailing across the southern part of Italy's "boot" toward Sicily. Join the expedition leader for a play-by-play description of the crew in the rigging and the action of setting square sails, staysails, and jibs as *Sea Cloud* shows her full glory. Relax with a book on deck, and enjoy delicious meals and complimentary drinks.

**Meals included:** breakfast, lunch, dinner

◇ DAY 9

## Otranto and Lecce, Italy

We stop at the picturesque Adriatic town of Otranto, whose idyllic seaside appearance contrasts with its turbulent past. We explore the cathedral, which has a large, intricate, 12th-century mosaic floor depicting real and mythological animals, a tree of life, historical figures, and biblical scenes. The cathedral is also noted for the chapel with the skulls and bones of more than 800 martyrs of the Turkish

invasion of 1480. We also walk the medieval walls for great views of the Aragonese Castle, the town, and the sea.

We continue to Lecce, the “Florence of the South,” to explore its remarkable 17th-century baroque architecture and its narrow pedestrian streets and grand plazas on a walking excursion. Some of the greatest architectural masters of the time competed to see who could create the most beautiful buildings, and the highly fanciful, ornamented style was given its own name: Lecce Baroque. Our walking tour of Lecce shows us the Basilica di Santa Croce and the adjacent Palazzo del Governo; the extraordinary Piazza del Duomo, with its cathedral and the Palazzo Vescovile; and the second-century Roman amphitheater. After visiting Lecce, we return to our ship and sail into the Adriatic.

Meals included: [breakfast, lunch, dinner](#)

**Departure City:** Dubrovnik, Croatia

Meals included: [breakfast](#)

◇ DAY 10

## At Sea

Sail across the Adriatic Sea, which sailing vessels have crossed for millennia. Sails on our ship are again raised the old-fashioned way, by hand, and the excitement is palpable. Hear presentations from our historian and naturalist, catch up on reading, and experience the five-star service for which *Sea Cloud* is famous. We have a farewell dinner to toast our voyage.

Meals included: [breakfast, lunch, dinner](#)

■ DAY 11

## Dubrovnik, Croatia / Disembark Ship

We arrive in Dubrovnik this morning and disembark. Transfer to the airport for flights home, or join our four-day optional extension exploring Dubrovnik, Trogir, Mostar, and Split.

**Departure Time:** Depart after 11:00 a.m. local time.

**Eastbound**

Naples, Italy → Dubrovnik, Croatia

**2024 Departure Dates**

Aboard *Sea Cloud*

08 Jun		
--------	--	--

**Alternative Routes**

Visit [Expeditions.com](http://Expeditions.com) for more information.

**2024 Departure Dates**

24 Sep
--------





## Sea Cloud

---

Guests

58

Cabins

30

---

**The historic Marjorie Merriweather Post sailing yacht, the latest tall ship in private hands, was built in 1931 and carries 30 sails measuring a total of 32,000 Sq. ft.**

Traveling aboard *Sea Cloud*, a historic four-masted barque, is an overall multisensory experience of the rarest kind—and this is true wherever you choose to explore. *Sea Cloud* in the Caribbean is idyllic because little competes with the sensual pleasure of the balmy air and the constant trade winds that invite everyone out on deck. And *Sea Cloud* in the Mediterranean is quintessential because it provides nonstop opportunities to set off from our anchorages or ports—where *Sea Cloud* is invariably the most beautiful ship—to explore the extraordinary beauty and charm of coastal towns and linger among antiquities and sites "sacred" to Western civilization.



The sheer opulence—antique furnishings, marble fireplaces, gold fixtures, exquisite accoutrements—of *Sea Cloud* is a testament to the efforts of the ship's original owners, businesswoman and socialite heiress Marjorie Merriweather Post and finance tycoon E.F. Hutton, who spared no expense in tasteful decoration. Supposedly they never asked the price of a single item while outfitting her.

Whether you're passively watching the athletic young crew scrambling high in the rigging, lolling in what Marjorie Merriweather Post called the "Blue Lagoon," or learning to capture the sun on the sails with your Lindblad-National Geographic certified photo instructor, life aboard *Sea Cloud* is either the point or the perfect interlude between explorations. And remember, another rarity we offer is *Sea Cloud* elegance, enjoyed with Lindblad Expeditions' signature informality—pack your deck shoes and shorts, please!

Return to the golden age of sail aboard this hand-sailed, four-masted ship. Built in 1931 by Wall Street businessman E.F. Hutton for his wife, Marjorie Merriweather Post, *Sea Cloud* carries 30 sails measuring a total of 32,000 square feet.



# Cabin Categories

## Category 1

**Promenade Deck: #28-29**

These cabins have two single beds and a large panorama window. Cabin features include telephones, temperature controls, a minibar, closet, dressing table, small safe, and a beautiful bathroom with marble sink and gold-plated fixtures.



## Category 2

**Promenade Deck: #18-25**

These cabins have two single beds, panorama window, dressing table, and efficient bathrooms with showers, marble sink, and gold-plated fixtures. They have telephones, temperature controls, a minibar, and a small safe.



## Category 3

**Lido Deck: #32-37**

These cabins have two single beds (which can be pushed together to make a queen-size bed, with one side against the wall), a writing desk and chair, panorama window, bathrooms with a marble sink, and gold-plated fixtures. They have telephones, temperature controls, a minibar, and a small safe.



## Category 4

**Lido Deck: #30-31**

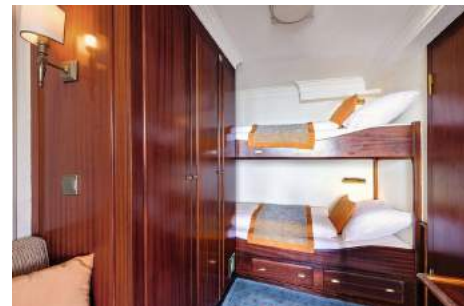
Cabins have a queen-size bed, a forward-facing panorama window and a side-facing window, walk-in closet, a writing desk and chair, and bathrooms with a marble sink, and gold-plated fixtures. They have telephones, temperature controls, a minibar, and a small safe.



## Category A Solo

**Promenade Deck: #16-17**

These solo cabins feature single beds and a window; they once housed the ship's officers. They are equipped with temperature controls and a minibar. Ice is delivered twice daily. Each cabin is equipped with a telephone, small sofa, and small safe. Bathrooms feature marble sinks and gold-plated fixtures.



## Category DB

**Main Deck: Deluxe B Original and deluxe cabins #5, 6, 9, 10**

Located on the Main Deck, these very large cabins, originally occupied by guests (and the nannies, #9-10) of the owner, have a mix of bed types and decorative motifs. All have portholes, one chair, table, two nightstands, dressing table with mirror, walk-in closet and small safe. Bathrooms are well appointed with a marble sink and gold-plated fixtures.



## Category DA

**Main Deck: Deluxe A Original and deluxe cabins #3, 4, 7, 8**

These very spacious cabins, originally occupied by guests of the Posts, have a mix of bed types and decorative motifs. These wood-paneled rooms feature various armchairs, marble fireplaces, and antique furnishings. All have two portholes, two chairs, an antique nightstand, antique secretary, decorative marble fireplace, antique desk, and small safe. Bathrooms are well appointment with a marble sink and gold-plated fixtures. These cabins offer different bed configurations (call for details).



## Category OS

**Main Deck: Owners Suite #1-2**

These incomparable suites were occupied by Marjorie Merriweather Post (#1) and E.F. Hutton (#2). They have king-size beds and grand marble bathrooms. They remain a testament to Marjorie Merriweather Post's indulgence in luxury with their large marble baths, fireplaces, overstuffed armchairs, and walk-in closets. Both have portholes, two armchairs, two antique nightstands, antique secretary, decorative marble fireplace, walk-in closet, and small safe.

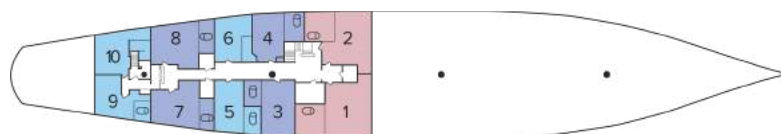




# Deck Plans

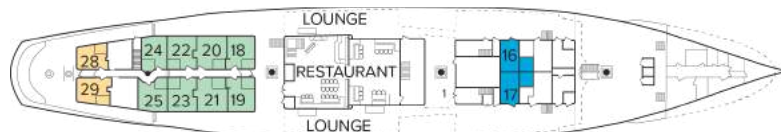
## Main Deck

- Category OS
- Category DA
- Category DB



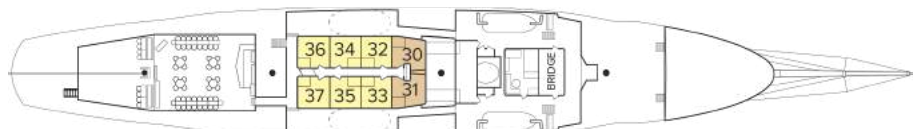
## Promenade Deck

- Category 1
- Category 2
- Category A Solo



## Lido Deck

- Category 3
- Category 4



# Ship amenities

## Public Areas

The covered lido bar is a superb place to congregate and enjoy the outdoors. The open-air “Blue Lagoon” is a wonderful place to relax. There is a sumptuous lounge and guests are welcome on the “open bridge” to learn how *Sea Cloud* is navigated and sailed.



## Meals

Meals are served in single seatings and in a casual setting and focus on local and Continental cuisine. Wines are included at lunch and dinner. Refreshments are always available.



## Cabins

30 outside cabins. All cabins face outside with windows or portholes. Cabins are equipped with a safe, hairdryers, and an outlet for razor. Bathrooms are well appointed with marble sinks and gold-plated fixtures.

## Expedition Equipment

Zodiacs make for quick landings and shoreline exploration, and in the Caribbean explore the vibrant undersea by snorkeling.

## Special Features

Internet connectivity and laundry services are available. A doctor is available 24 hours a day free of charge. Enjoy black-tie amenities in shorts and deck shoes. While the ship's spaces are suitable for formality, you'll find a certain lighthearted delight in enjoying it in casual dress.



## Special Offers

### CELEBRATE LIFE'S MILESTONES

Celebrate a milestone with a group of eight or more and enjoy a special amenity package including: 5% savings on voyage fares, custom group photo, US\$150 shipboard credit for the group, and other special gifts. Milestone celebration to be communicated at time of booking. Valid for new bookings only on select departures, subject to availability, not applicable on airfare or extensions, and may not be combined with other offers. Deposit, final payments, and cancellation policies for group travel vary from our regular policies. Call for details.

---

### 10% OFF BACK-TO-BACK VOYAGES

Save 10% on consecutive departures, applicable on voyage fares only and not valid on extensions or airfare. Valid for new bookings only, subject to availability, and may not be combined with other offers. Call for details.

---

### SAVE 5% TRAVELING AS A GROUP

Save 5% when traveling as a group of eight or more people. Valid on voyage fares only and not applicable on extensions or airfare. Deposit, final payments, and cancellation policies for group travel vary from our regular policies. Valid for new bookings only, subject to availability, and may not be combined with other offers. Call for details.

---

### COMBINING OFFERS

Certain offers may be combinable, up to two savings opportunities, except where noted otherwise. For example, travel with a group of 8 or more on back-to-back expeditions, and take advantage of both savings.



## Included in price

All accommodations aboard ship per itinerary; all meals as indicated in the itinerary, both aboard and onshore; beer, wine, cocktails, and spirits aboard the ship (except certain super premium brands which are available for purchase); hors d'oeuvres, 24-hour access to snacks, premium coffees and teas, non-alcoholic beverages, and filtered water; excursions and airport transfers to and from recommended flights, as indicated in the itinerary; crew gratuities; guidance and company of our leading expedition staff; assistance by the Lindblad Expeditions-National Geographic certified photo instructor; presentations by expedition staff and expert guest speakers; complimentary reusable water bottle; services of a physician, physician's assistant, nurse practitioner, or paramedic; 24-hour access to shared spaces; park and site entrance fees, special access permits, and port taxes. Unused services or items included in our programs are non-refundable.

---

## Not included in price

Airfare (except flights when indicated as included); pre- and post-expedition extensions; additional hotel nights (except when indicated as included); private transfers; laundry, Wi-Fi, and phone services (except when indicated as included); travel protection plans; and passport, visa, and immigration fees.

---

## Travel protection plan

We strongly recommend our guests to take advantage of our Travel Protection Plan. This plan offers comprehensive coverage to protect you from cancellation fees, costs incurred due to trip delays/interruption, damage or loss of baggage, medical assistance, and evacuation during your travels. Our Travel Protection Plan is available for U.S. residents only, and may be purchased any time prior to final payment due date, Travel Protection premiums are non-refundable once plan is purchased. Learn more about our Travel Protection "Plus" Plan: <https://www.expeditions.com/terms-conditions/travel-protection-plan/>

---

## Cancellation policy

Review our cancellation policy: <https://www.expeditions.com/cancellation-policy/>