

Mediterranean, New and Noteworthy, Mediterranean & Europe  
43° 30' N 16° 26' E

## Croatia Under Sail: Dubrovnik, Split, and Zadar aboard the Sea Cloud Fleet

Set sail aboard the incomparable Sea Cloud fleet as we trace the scenic coast of Croatia, exploring the cities, cultures, and cuisine that left a lasting influence on Central Europe. Step into ancient walled cities like Zadar, Rovinj, and Dubrovnik, rife with relics that tell stories of centuries-old wars and empires. Sip on locally-made wines from family-owned vineyards and savor regional culinary delights in charming coastal towns. In between daily explorations ashore, enjoy ample time to lounge on deck, take in balmy Adriatic breezes, and witness an orchestra of crew members going aloft in the intricate web of riggings on the historic *Sea Cloud* and her modern counterpart, *Sea Cloud II*.

From

**\$ 15,184** / per person  
Does not include flights



### DATES

May, Jun, Aug  
and Sep



### DURATION

9 Days



### SHIPS

*Sea Cloud*  
*Sea Cloud II*



### STARTS AT

Split, Croatia



### ENDS AT

Split, Croatia



## Highlights

- ★ Bask in the romance of tall ship sailing as you cruise the turquoise waters of the Adriatic Sea among picturesque isles
- ★ Discover ancient ruins, centuries-old architecture, and several UNESCO World Heritage sites that narrate the story of Croatia's past
- ★ In Pula, discover the impressive amphitheater built in the first century A.D.—the only remaining Roman amphitheater to have four side towers entirely preserved
- ★ Learn about the rich history of Vis island, from its traditional *falkušas*—boats used in Europe's oldest regatta—to Tito's once-secret Cold War tunnels







## Day by day

### DAY 1

#### Split, Croatia / Embark Ship

Arrive in Split and embark the ship in the late afternoon.

**Arrival time:** Arrive before 4:00 p.m. local time.

**Arrival City:** Split, Croatia

Meals included: [dinner](#)

### ◇ DAY 2

#### At Sea

Gather on deck for a play-by-play description of the crew in the rigging and the action of setting square sails, staysails, and jibs as the ship shows her full glory. Relax with a book on deck and enjoy delicious meals and complimentary drinks. This evening, enjoy the Captain's welcome cocktail hour and dinner.

Meals included: [breakfast](#), [lunch](#), [dinner](#)

### ◇ DAY 3

#### Rovinj / Pula

Go ashore in Rovinj, once one of the most important cities in the Venetian Empire, and travel inland to Pula. Settled by an ancient Illyrian tribe, it reached the height of its power under Roman Emperor Caesar Augustus. Venture to its well-preserved amphitheater, built by Emperor Vespasian in the first century A.D. and believed to have held around 20,000 spectators. Drive through olive groves and vineyards to the San Tommaso Relais & Winery, sample award-winning vintages, and hear tales of when the region was ruled by the Austro-Hungarian empire. After lunch aboard the ship, venture into Rovinj's charming old town set on a tiny peninsula that was an island until 1763. Walk the cobbled streets, peruse the local open-air

market, and see sites that illustrate the city's close ties with Venice.

Meals included: [breakfast](#), [lunch](#), [dinner](#)

### ◇ DAY 4

#### Zadar / At Sea

Arrive in Zadar this morning, the oldest continuously inhabited city in Croatia. Explore its defensive walls, gates, and bastions, developed during the 16th century to thwart Ottoman incursions. Stroll the ruins of the ancient Roman Forum and visit St. Mary's Church, a Benedictine convent dating back to the 11th century. Here, we'll have an opportunity to meet some of the resident nuns who serve as caretakers of the church and the adjoining treasury, which houses priceless ecclesiastical artifacts of Byzantine and Venetian craftsmanship and an extensive collection of relics. Enjoy an afternoon at sea as we sail to Hvar.

Meals included: [breakfast](#), [lunch](#), [dinner](#)

### ◇ DAY 5

#### Hvar / At Sea

At the height of Venetian rule, Hvar was the region's most prosperous center. Set off on a walking tour along the waterfront and inside the delightful walled city. Visit the 15th-century Franciscan monastery, the arsenal, and Croatia's oldest active theater. If you choose, hike up to the citadel for spectacular views of the island and the azure Adriatic beyond. Before setting sail toward Komiža this afternoon, we'll have the opportunity to enjoy a swim from one of the island's picturesque beaches.

Meals included: [breakfast](#), [lunch](#), [dinner](#)

### ◇ DAY 6

#### Komiža

One of the outermost of Croatia's many islands, Vis was ruled successively by the ancient Greeks, Romans, Venetians, Austrians, and Italians. It became a central Yugoslav military base during World War II and only opened to tourists in the 1990s, making it less developed and less populated than many of its neighbors. Set out on a walking tour of the fishing town of Komiža, and see the traditional sailing vessels called *falkušas*, which have been used here since the 16th century. Hear about age-old regattas originally designed to keep pirates at bay, take in expansive views from the rugged interior, and visit a family-owned winery for a tasting. See the extensive tunnels where Yugoslav resistance leader Josip Broz Tito hid troops and weapons at the end of World War II and into the Cold War, and venture to hillside barracks and hidden bunkers.

Meals included: breakfast, lunch, dinner

◇ DAY 7

## Dubrovnik

Spend the day exploring Croatia's most renowned showplace, Dubrovnik—a UNESCO World Heritage site considered one of the best-preserved medieval towns in the world. Get thoroughly introduced to this "Pearl of the Adriatic," and later, enjoy a private performance of traditional Croatian *klapa* music before an evening sail to Korčula.

Meals included: breakfast, lunch, dinner

◇ DAY 8

## Korčula / At Sea

Anchor at the island port of Korčula, one of the most beautiful medieval towns in the Balkans. Visit the town's sites and see the house some believe is Marco Polo's birthplace. Take some time to enjoy the waterfront, including a swim from the beach. Later, experience a Moreska sword dance performance, one of Korčula's proudest traditions dating back to the 15th century. Spend the afternoon under sail and enjoy the Captain's

farewell dinner as we make our way to Split.

Meals included: breakfast, lunch, dinner

■ DAY 9

## Split / Disembark Ship

Disembark in Split this morning and transfer to the airport for your flight home.

**Departure Time:** Depart after 12:00 p.m. local time.

**Departure City:** Split, Croatia

Meals included: breakfast, lunch, dinner

**Expedition**

Split, Croatia → Split, Croatia

**2025 Departure Dates**

Aboard *Sea Cloud II*

28 May		
05 Jun	13 Jun	

Aboard *Sea Cloud*

20 Aug	28 Aug	
05 Sep		





## Sea Cloud

---

Guests

58

Cabins

30

---

**The historic Marjorie Merriweather Post sailing yacht, the latest tall ship in private hands, was built in 1931 and carries 30 sails measuring a total of 32,000 Sq. ft.**

Traveling aboard *Sea Cloud*, a historic four-masted barque, is an overall multisensory experience of the rarest kind—and this is true wherever you choose to explore. *Sea Cloud* in the Caribbean is idyllic because little competes with the sensual pleasure of the balmy air and the constant trade winds that invite everyone out on deck. And *Sea Cloud* in the Mediterranean is quintessential because it provides nonstop opportunities to set off from our anchorages or ports—where *Sea Cloud* is invariably the most beautiful ship—to explore the extraordinary beauty and charm of coastal towns and linger among antiquities and sites "sacred" to Western civilization.

The sheer opulence—antique furnishings, marble fireplaces, gold fixtures, exquisite accoutrements—of *Sea Cloud* is a testament to the efforts of the ship's original owners, businesswoman and socialite heiress Marjorie Merriweather Post and finance tycoon E.F. Hutton, who spared no expense in tasteful decoration. Supposedly they never asked the price of a single item while outfitting her.

Whether you're passively watching the athletic young crew scrambling high in the rigging, lolling in what Marjorie Merriweather Post called the "Blue Lagoon," or learning to capture the sun on the sails with your Lindblad-National Geographic certified photo instructor, life aboard *Sea Cloud* is either the point or the perfect interlude between explorations. And remember, another rarity we offer is *Sea Cloud* elegance, enjoyed with Lindblad Expeditions' signature informality—pack your deck shoes and shorts, please!

Return to the golden age of sail aboard this hand-sailed, four-masted ship. Built in 1931 by Wall Street businessman E.F. Hutton for his wife, Marjorie Merriweather Post, *Sea Cloud* carries 30 sails measuring a total of 32,000 square feet.





# Cabin Categories

## Category 1

**Promenade Deck: #28-29**

These cabins have two single beds and a large panorama window. Cabin features include telephones, temperature controls, a minibar, closet, dressing table, small safe, and a beautiful bathroom with marble sink and gold-plated fixtures.



## Category 2

**Promenade Deck: #18-25**

These cabins have two single beds, panorama window, dressing table, and efficient bathrooms with showers, marble sink, and gold-plated fixtures. They have telephones, temperature controls, a minibar, and a small safe.



## Category 3

**Lido Deck: #32-37**

These cabins have two single beds (which can be pushed together to make a queen-size bed, with one side against the wall), a writing desk and chair, panorama window, bathrooms with a marble sink, and gold-plated fixtures. They have telephones, temperature controls, a minibar, and a small safe.



## Category 4

**Lido Deck: #30-31**

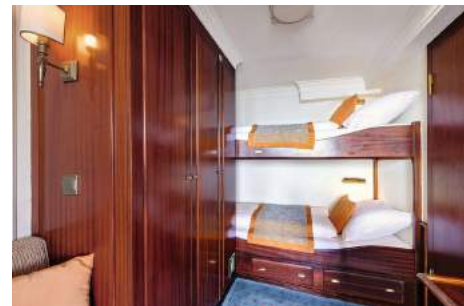
Cabins have a queen-size bed, a forward-facing panorama window and a side-facing window, walk-in closet, a writing desk and chair, and bathrooms with a marble sink, and gold-plated fixtures. They have telephones, temperature controls, a minibar, and a small safe.



## Category A Solo

**Promenade Deck: #16-17**

These solo cabins feature single beds and a window; they once housed the ship's officers. They are equipped with temperature controls and a minibar. Ice is delivered twice daily. Each cabin is equipped with a telephone, small sofa, and small safe. Bathrooms feature marble sinks and gold-plated fixtures.



## Category DB

**Main Deck: Deluxe B Original and deluxe cabins #5, 6, 9, 10**

Located on the Main Deck, these very large cabins, originally occupied by guests (and the nannies, #9-10) of the owner, have a mix of bed types and decorative motifs. All have portholes, one chair, table, two nightstands, dressing table with mirror, walk-in closet and small safe. Bathrooms are well appointed with a marble sink and gold-plated fixtures.



## Category DA

**Main Deck: Deluxe A Original and deluxe cabins #3, 4, 7, 8**

These very spacious cabins, originally occupied by guests of the Posts, have a mix of bed types and decorative motifs. These wood-paneled rooms feature various armchairs, marble fireplaces, and antique furnishings. All have two portholes, two chairs, an antique nightstand, antique secretary, decorative marble fireplace, antique desk, and small safe. Bathrooms are well appointment with a marble sink and gold-plated fixtures. These cabins offer different bed configurations (call for details).



## Category OS

**Main Deck: Owners Suite #1-2**

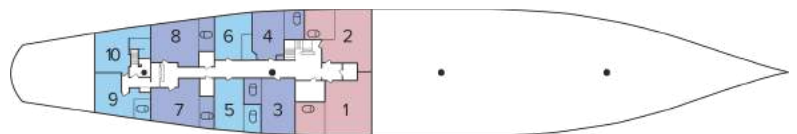
These incomparable suites were occupied by Marjorie Merriweather Post (#1) and E.F. Hutton (#2). They have king-size beds and grand marble bathrooms. They remain a testament to Marjorie Merriweather Post's indulgence in luxury with their large marble baths, fireplaces, overstuffed armchairs, and walk-in closets. Both have portholes, two armchairs, two antique nightstands, antique secretary, decorative marble fireplace, walk-in closet, and small safe.



# Deck Plans

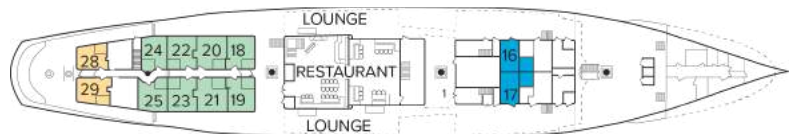
## Main Deck

- Category OS
- Category DA
- Category DB



## Promenade Deck

- Category 1
- Category 2
- Category A Solo



## Lido Deck

- Category 3
- Category 4





# Ship amenities

## Public Areas

The covered lido bar is a superb place to congregate and enjoy the outdoors. The open-air “Blue Lagoon” is a wonderful place to relax. There is a sumptuous lounge and guests are welcome on the “open bridge” to learn how *Sea Cloud* is navigated and sailed.



## Meals

Meals are served in single seatings and in a casual setting and focus on local and Continental cuisine. Wines are included at lunch and dinner. Refreshments are always available.



## Cabins

30 outside cabins. All cabins face outside with windows or portholes. Cabins are equipped with a safe, hairdryers, and an outlet for razor. Bathrooms are well appointed with marble sinks and gold-plated fixtures.

## Expedition Equipment

Zodiacs make for quick landings and shoreline exploration, and in the Caribbean explore the vibrant undersea by snorkeling.

## Special Features

Internet connectivity and laundry services are available. A doctor is available 24 hours a day free of charge. Enjoy black-tie amenities in shorts and deck shoes. While the ship's spaces are suitable for formality, you'll find a certain lighthearted delight in enjoying it in casual dress.





## Sea Cloud II

---

Guests

88

Cabins

44

---

**Sail in style aboard a unique vessel that's a perfect combination of nostalgic elegance and modern comfort**

Sea Cloud II is an alluring sailing vessel perfectly suited to travel the scenic shores of Italy and Croatia, exploring little-seen archipelagos and anchoring in small coves. A romantic tall ship with every modern comfort, Sea Cloud II combines the spaciousness and welcome amenities of a contemporary vessel with the grace and elegance of a square rigger. Inspired by the legendary 1930s yacht Sea Cloud, Sea Cloud II embodies the Golden Age of Sail; yet, it is modernly built, reflecting today's standards of luxury. From marble bathrooms and elegant furnishings to televisions and climate controls, comfortable cabins have expected amenities.



Expansive outdoor decks and viewing areas provide ideal vantage points for appreciating the scenery of the Mediterranean and the Adriatic, and for savoring the romance of being under sail. Al fresco dining—accompanied by a pianist—is offered on the Lido Deck where shorts and deck shoes are the norm. While the ship's indoor spaces, like a sizeable dining room and lounge, are suitable for formality, there's a lighthearted delight in enjoying them in casual dress. Guests can also take advantage of the spa that offers a sauna, fitness area, and massage therapy.

Expect the hallmarks of a Lindblad Expeditions-National Geographic voyage, including expert field staff like historians and certified photo instructors (CPIs); top-quality dining that includes locally sourced ingredients and regional specialties; evening Recaps that review the day and set the stage for the next; experienced service; and an open Bridge policy that invites guests to observe the workings of a ship under sail.





# Cabin Categories

## Category 1S

**Cabin Deck:** #207-210

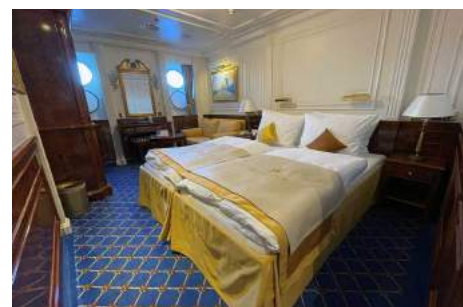
These 236 sq. ft. outside-facing cabins, located on the Cabin Deck, have a double bed (which can be separated into two single beds for cabin share program) and two portholes. Cabin features include a couch, television, small table, dressing table with mirror, a closet, two nightstands, minibar, safe, temperature controls, and telephone. The beautiful marble bathroom is equipped with a shower.



## Category 1

**Cabin Deck:** #207-210

These 236 sq. ft. outside-facing cabins, located on the Cabin Deck, have a double bed (which can be separated into two single beds) and two portholes. Cabin features include a couch, television, small table, dressing table with mirror, a closet, two nightstands, minibar, safe, temperature controls, and telephone. The beautiful marble bathroom is equipped with a shower. Note: Solo occupancy cabins are available in Category 1.



## Category 2

**Cabin Deck:** #211-212, 214-217, 224-231

These 247 sq. ft. outside-facing cabins, located on the Cabin Deck, have a double bed (which can be separated into two single beds) and two portholes. Cabin features include a couch, television, small table, dressing table with mirror, a closet, two nightstands, minibar, safe, temperature controls, and telephone. The beautiful marble bathroom is equipped with a shower. Note: Some Category 2 cabins have connecting doors.



## Category 3

**Cabin Deck:** #218-223

These 258 sq. ft. outside-facing cabins, located on the Cabin Deck, have a double bed (which can be separated into two single beds) and three portholes. Cabin features include two chairs, a small table, television, dressing table with mirror, writing desk, two closets, two nightstands, minibar, safe, temperature controls, and telephone. The beautiful marble bathroom is equipped with a shower.



## Category 4

**Promenade Deck: #301, 302**

These 249 sq. ft. outside-facing cabins, located on the Promenade Deck, have a double bed (which can be separated into two single beds) and three large panorama windows. Cabin features include two chairs, a small table, television, writing desk/dressing table with mirror, closets, two nightstands, minibar, safe, temperature controls, and telephone. The beautiful marble bathroom is equipped with a shower.



## Category 5

**Promenade Deck: #303, 304**

These outside-facing suites, located on the Promenade Deck, have a double bed (which can be separated into two single beds) and three large panorama windows. #303 is 271 sq. ft. and #304 is 265 sq. ft. Suite features include an electric fireplace, separate sitting area with two large chairs and large table, walk-in closet, television, dressing table with mirror, two nightstands, minibar, safe, temperature controls, and telephone. The beautiful marble and gold-fitted bathroom is equipped with shower bathtub and marble washbasin.



## Category 6

**Promenade Deck: #305-312, 314-319**

These 281 sq. ft. outside-facing suites, located on the Promenade Deck, have a double bed (which can be separated into two single beds) and three large panorama windows. Suite features include an electric fireplace, separate sitting area with two large chairs and large table, walk-in closet, television, dressing table with mirror, two nightstands, minibar, safe, temperature controls, and telephone. The beautiful marble and gold-fitted bathroom is equipped with shower bathtub and marble washbasin.



## Category 7

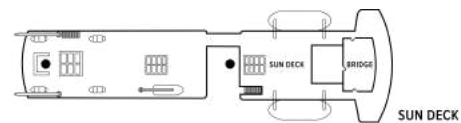
**Lido Deck: #401, 402**

These 335 sq. ft. outside-facing suites, located on the Lido Deck, have a double four-poster bed and four large panorama windows. Cabin features include an electric fireplace, separate sitting area with a couch, two large chairs and large table, walk-in closet with four large wardrobes, television, dressing table with mirror, two nightstands, minibar, safe, temperature controls, and telephone. The large, beautiful marble and gold-fitted bathroom is equipped with separate shower and bathtub, and marble washbasin.



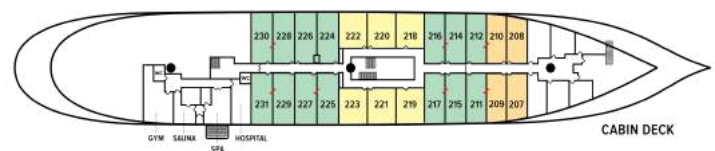
# Deck Plans

## Sun Deck



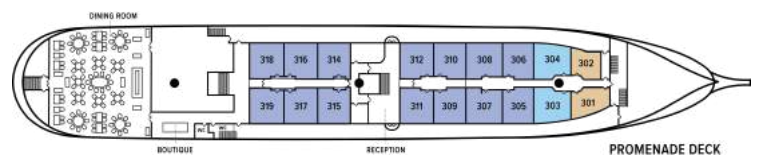
## Cabin Deck

- Category 1S
- Category 1
- Category 2
- Category 3



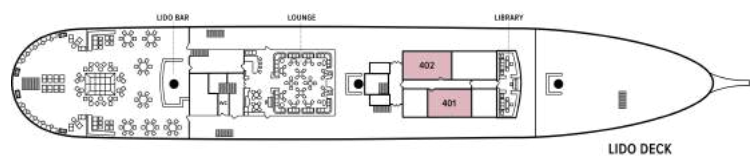
## Promenade Deck

- Category 4
- Category 5
- Category 6



## Lido Deck

- Category 7





# Ship amenities

## Well-Appointed Cabins

All cabins are outside-facing and have portholes or windows, a marble bathroom, minibar, ample storage space, and period furnishings. Some include special features like a separate sitting area, walk-in dressing area, canopy bed, or electric fireplace.

## The Thrill of Being Under Sail

A three-masted barque with 23 sails, Sea Cloud II is sailed by hand as often as conditions permit, starting with a full description of the sailing process the first morning on board and then as much as possible during the voyage. This tradition carried out by a skilled crew is an art form that contributes to the romance of being at sea.



## Welcome Wellness Amenities

Unwind in the spa with a sauna or massage. A fitness room includes a treadmill, stationary bicycle, rowing machine, elliptical trainer, and weights.

## A Choice of Indoor Public Spaces

An elegant lounge is a perfect venue for a nightly cocktail while the light-filled library is a lovely spot to sit down with a book about the region. Guests are welcome on the Bridge (conditions permitting) to learn how Sea Cloud II is navigated and sailed.



## Inviting Outdoor Spaces

Outdoor spaces like the Lido and Promenade Decks invite relaxation in the open air. Feel the balmy breezes as idyllic scenery passes. Stretch out in a recliner and enjoy the ease of travel under sail; or enjoy a refreshment under the shade of a canopy.

## Quality Dining

Dinners are served in single seating in the spacious restaurant, where breakfasts are also served buffet style, with eggs to order. Lunches, afternoon tea, and some special meals are more "at leisure" on the Lido Deck. All food and drink on board focus on Continental cuisine and local specialties.

## Noteworthy Features

The ship's interiors have the nostalgic feel of a luxurious 1930s yacht but boast contemporary features such as a helpful reception desk, wide passageways, and a central staircase. During your voyage, we will cover your bar tab aboard the ship (excluding certain super-premium brands).

# Special Offers

## SAVE 5% TRAVELING AS A GROUP

Save 5% when traveling as a group of eight or more people. Valid on voyage fares only and not applicable on extensions or airfare. Deposit, final payments, and cancellation policies for group travel vary from our regular policies. Valid for new bookings only, subject to availability, and may not be combined with other offers. Call for details.

---

## CELEBRATE LIFE'S MILESTONES

Celebrate a milestone with a group of eight or more and enjoy a special amenity package including: 5% savings on voyage fares, custom group photo, US\$150 shipboard credit for the group, and other special gifts. Milestone celebration to be communicated at time of booking. Valid for new bookings only on select departures, subject to availability, not applicable on airfare or extensions, and may not be combined with other offers. Deposit, final payments, and cancellation policies for group travel vary from our regular policies. Call for details.

---

## 10% OFF BACK-TO-BACK VOYAGES

Save 10% on consecutive departures, applicable on voyage fares only and not valid on extensions or airfare. Valid for new bookings only, subject to availability, and may not be combined with other offers. Call for details.

---

## COMBINING OFFERS

Certain offers may be combinable, up to two savings opportunities, except where noted otherwise. For example, travel with a group of 8 or more on back-to-back expeditions, and take advantage of both savings.

## Included in price

All accommodations aboard ship per itinerary; all meals as indicated in the itinerary, both aboard and onshore; beer, wine, cocktails, and spirits aboard the ship (except certain super premium brands which are available for purchase); hors d'oeuvres, 24-hour access to snacks, premium coffees and teas, non-alcoholic beverages, and filtered water; excursions and airport transfers to and from recommended flights, as indicated in the itinerary; crew gratuities; guidance and company of our leading expedition staff; assistance by the Lindblad Expeditions-National Geographic certified photo instructor; presentations by expedition staff and expert guest speakers; complimentary reusable water bottle; services of a physician, physician's assistant, nurse practitioner, or paramedic; 24-hour access to exercise equipment (where available); 24-hour access to shared spaces; park and site entrance fees, special access permits, and port taxes. Unused services or items included in our programs are non-refundable.

---

## Not included in price

Airfare (except flights when indicated as included); pre- and post-expedition extensions; additional hotel nights (except when indicated as included); private transfers; laundry, Wi-Fi, and phone services (except when indicated as included); travel protection plans; and passport, visa, and immigration fees.

---

## Travel protection plan

We strongly recommend our guests to take advantage of our Travel Protection Plan. This plan offers comprehensive coverage to protect you from cancellation fees, costs incurred due to trip delays/interruption, damage or loss of baggage, medical assistance, and evacuation during your travels. Our Travel Protection Plan is available for U.S. residents only, and may be purchased any time prior to final payment due date, Travel Protection premiums are non-refundable once plan is purchased. Learn more about our Travel Protection "Plus" Plan: <https://www.expeditions.com/terms-conditions/travel-protection-plan/>

---

## Cancellation policy

Review our cancellation policy: <https://www.expeditions.com/cancellation-policy/>