








 Mediterranean, New and Noteworthy, Mediterranean & Europe  
42° 2' N 9° 0' E

# Corsica and Sardinia aboard Sea Cloud

Sail aboard the legendary square-rigger *Sea Cloud* to explore the fiercely independent islands of Sardinia and Corsica. Stroll through medieval walled cities and old coastal villages. Sip local wine and savor regional seafood dishes. Visit spectacular UNESCO World Heritage sites, including Sardinia’s Su Nuraxi. Take in the Corsican maquis—the herbal scrubland boasting aromatic fragrances. Stand on deck and watch the orchestrated frenzy of crew members going aloft in the ship’s web of riggings to hand-set 30 sails.

From  
**\$ 18,790** / per person  
Does not include flights

 <b>DATES</b> May	 <b>DURATION</b> 11 Days
 <b>SHIPS</b> <i>Sea Cloud</i>	
 <b>STARTS AT</b> Naples, Italy	 <b>ENDS AT</b> Naples, Italy



## Highlights

- ★ Step aboard the square-rigger *Sea Cloud*, a timeless sailing yacht once owned by heiress Marjorie Merriweather Post
- ★ Explore the UNESCO World Heritage Site of Su Nuraxi di Barumini, one of the largest and most well-preserved Bronze Age stone fortresses known as *nuraghi*
- ★ See the stunning karst limestone rock ravines of Les Calanques de Piana, one of the region's most stunning landscapes
- ★ Enjoy sampling wine at a historic estate in Alghero's countryside, then set off by boat to explore Neptune's Grotto, a stunning stalactite cave







## Day by day

### ■ DAY 1

#### Naples, Italy / Embark Ship

Arrive in Naples and transfer from the airport to the legendary *Sea Cloud* in the afternoon. Cast off from Naples' active harbor and pass by the rugged coast of the island of Capri at sunset as we enter the Tyrrhenian Sea.

**Arrival Time:** Arrive before 4:00 p.m. local time.

**Arrival City:** Naples, Italy

Meals included: breakfast, lunch, dinner

### ◇ DAY 2

#### At Sea

Join our expedition leader for a play-by-play description of the crew in the rigging and the action of the setting of square sails, staysails, and jibs as *Sea Cloud* shows her full glory. Bask in the comfort and intrigue of this legendary and historic square-rigger—enjoy delicious meals, complimentary drinks, and talks by the expedition staff as we sail toward Sardinia.

Meals included: breakfast, lunch, dinner

### ◇ DAY 3

#### Cagliari, Sardinia

We dock in Sardinia's capital of Cagliari on the south end of the island, dominated by its hilltop medieval castle. This morning we explore Sardinia's history, culture, and landscape with a drive inland to the archaeological centerpiece of Su Nuraxi in Barumini. This UNESCO World Heritage site is the largest and best preserved of the more than 700 Bronze Age nuraghi, or stone fortresses, that dot the island and have come to symbolize the island's distant past.

Return to *Sea Cloud* for lunch. This afternoon,

peruse the collections at the National Archaeological Museum before taking a walking tour of the old town.

Meals included: breakfast, lunch, dinner

### ◇ DAY 4

#### At Sea / Oristano

We set sail again for the full morning, then enter the large western bay of Oristano to dock for the afternoon. Visit the archaeological sites of Santa Cristina and Nuraghe Losa before enjoying some local food and entertainment. Enjoy dinner at a local restaurant this evening before returning to *Sea Cloud*.

Meals included: breakfast, lunch, dinner

### ◇ DAY 5

#### Alghero

This morning we anchor off the medieval city of Alghero, which reveals its historic Catalan influence and is still sometimes referred to as "Barceloneta." The attractive old town is a joy to explore on foot, as are the protective sea walls. Local guides give us a walking orientation to the old town to start the day. Next, travel to nearby Ledà d'Ittiri estate for a wine tasting and tour. In the afternoon we take a local boat out to the dramatic Capo Caccia peninsula to visit the colorful and expansive cave of Neptune's Grotto. Return to *Sea Cloud* and sail by the dramatic cliffs of Capo Caccia in the golden sunset light on our way toward Corsica.

Meals included: breakfast, lunch, dinner

### ◇ DAY 6

#### Bonifacio, Corsica

Wake up to the sunrise over the layered cliffs of Bonifacio. Enter the narrow harbor to dock and

enjoy the day in one of the Mediterranean's most beautiful towns. Begin with a walking orientation to the citadel, established by the powerful margraves of Tuscany in the ninth century. The rest of the morning is devoted to enjoying this lovely destination.

In the afternoon, we offer an option to drive inland to view some of the menhir standing stone alignments of the Sartène region of Corsica, or to experience the characteristic Corsican maquis, the herbal scrubland known for its fragrances.

Meals included: breakfast, lunch, dinner

◇ DAY 7

## Ajaccio / Les Calanques de Piana

The rock formations of Les Calanques de Piana, accessible from the coastal city of Ajaccio, are some of the most stunning natural landscapes in the Mediterranean. Les Calanques de Piana are karst limestone rock ravines that have been shaped by wind and water erosion, and the Calanques de Piana in Corsica are deservedly designated as a UNESCO World Heritage site. Our morning is devoted to this landscape and the delightful town of Piana, set amid this dramatic labyrinth of rock formations. The scenery and the accompanying fragrance of the maquis and the pure, clean air are unforgettable highlights.

Meals included: breakfast, lunch, dinner

◇ DAY 8

## Calvi / At Sea

The gorgeous crescent bay, with its narrow white sand beach, and the prominent Genoese citadel have made the northwest Corsican town of Calvi a renowned summer resort destination for the last century. In the shoulder seasons it is a very pleasant town in a lovely setting to explore on foot, starting at the hilltop citadel with its ethnographic museum and medieval shops and alleys. Work your way back

down to the Port de Plaisance waterfront to reboard *Sea Cloud*. This afternoon, we sail north around Cap Corse.

Meals included: breakfast, lunch, dinner

◇ DAY 9

## At Sea / Bastia

With hopes for an overnight sail, we keep the morning free to continue sailing on the northeast side of Corsica toward the port of Bastia, where we dock for the afternoon. Explore Bastia, made up of the upper Terra Nova citadel and the lower working district of Terra Vecchia with its lively food and fish markets. Or, opt to drive north to explore the wild nature of Cap Corse, which is the protruding mountainous peninsula of north Corsica, before returning for an evening in Bastia.

Meals included: breakfast, lunch, dinner

◇ DAY 10

## At Sea

We spend the final full day on *Sea Cloud*, hopefully enjoying the ship under full sail, reflecting on our visits to the unique and extraordinary islands of Sardinia and Corsica, and sorting our photos for the evening's "guest slide show" of favorite photos contributed by our shipmates.

Meals included: breakfast, lunch, dinner

■ DAY 11

## Naples / Disembark Ship

Disembark in Naples after breakfast and transfer to the airport for your flights home.

**Departure Time:** Depart after 12:00 p.m. local time.

**Departure City:** Naples, Italy

Meals included: breakfast

## 2024 Expedition

Naples, Italy → Naples, Italy

## 2024 Departure Dates

Aboard *Sea Cloud*

19 May	29 May		
--------	--------	--	--



## Sea Cloud

---

Guests

58

Cabins

30

---

**The historic Marjorie Merriweather Post sailing yacht, the latest tall ship in private hands, was built in 1931 and carries 30 sails measuring a total of 32,000 Sq. ft.**

Traveling aboard *Sea Cloud*, a historic four-masted barque, is an overall multisensory experience of the rarest kind—and this is true wherever you choose to explore. *Sea Cloud* in the Caribbean is idyllic because little competes with the sensual pleasure of the balmy air and the constant trade winds that invite everyone out on deck. And *Sea Cloud* in the Mediterranean is quintessential because it provides nonstop opportunities to set off from our anchorages or ports—where *Sea Cloud* is invariably the most beautiful ship—to explore the extraordinary beauty and charm of coastal towns and linger among antiquities and sites "sacred" to Western civilization.



The sheer opulence—antique furnishings, marble fireplaces, gold fixtures, exquisite accoutrements—of *Sea Cloud* is a testament to the efforts of the ship's original owners, businesswoman and socialite heiress Marjorie Merriweather Post and finance tycoon E.F. Hutton, who spared no expense in tasteful decoration. Supposedly they never asked the price of a single item while outfitting her.

Whether you're passively watching the athletic young crew scrambling high in the rigging, lolling in what Marjorie Merriweather Post called the "Blue Lagoon," or learning to capture the sun on the sails with your Lindblad-National Geographic certified photo instructor, life aboard *Sea Cloud* is either the point or the perfect interlude between explorations. And remember, another rarity we offer is *Sea Cloud* elegance, enjoyed with Lindblad Expeditions' signature informality—pack your deck shoes and shorts, please!

Return to the golden age of sail aboard this hand-sailed, four-masted ship. Built in 1931 by Wall Street businessman E.F. Hutton for his wife, Marjorie Merriweather Post, *Sea Cloud* carries 30 sails measuring a total of 32,000 square feet.





# Cabin Categories

## Category 1

**Promenade Deck: #28-29**

These cabins have two single beds and a large panorama window. Cabin features include telephones, temperature controls, a minibar, closet, dressing table, small safe, and a beautiful bathroom with marble sink and gold-plated fixtures.



## Category 2

**Promenade Deck: #18-25**

These cabins have two single beds, panorama window, dressing table, and efficient bathrooms with showers, marble sink, and gold-plated fixtures. They have telephones, temperature controls, a minibar, and a small safe.



## Category 3

**Lido Deck: #32-37**

These cabins have two single beds (which can be pushed together to make a queen-size bed, with one side against the wall), a writing desk and chair, panorama window, bathrooms with a marble sink, and gold-plated fixtures. They have telephones, temperature controls, a minibar, and a small safe.



## Category 4

**Lido Deck: #30-31**

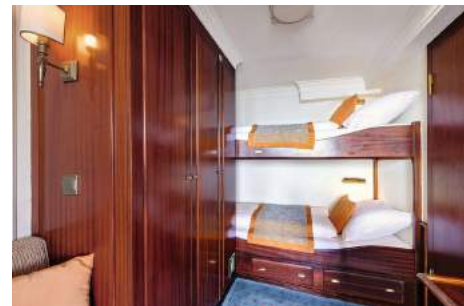
Cabins have a queen-size bed, a forward-facing panorama window and a side-facing window, walk-in closet, a writing desk and chair, and bathrooms with a marble sink, and gold-plated fixtures. They have telephones, temperature controls, a minibar, and a small safe.



## Category A Solo

**Promenade Deck: #16-17**

These solo cabins feature single beds and a window; they once housed the ship's officers. They are equipped with temperature controls and a minibar. Ice is delivered twice daily. Each cabin is equipped with a telephone, small sofa, and small safe. Bathrooms feature marble sinks and gold-plated fixtures.



## Category DB

**Main Deck: Deluxe B Original and deluxe cabins #5, 6, 9, 10**

Located on the Main Deck, these very large cabins, originally occupied by guests (and the nannies, #9-10) of the owner, have a mix of bed types and decorative motifs. All have portholes, one chair, table, two nightstands, dressing table with mirror, walk-in closet and small safe. Bathrooms are well appointed with a marble sink and gold-plated fixtures.



## Category DA

**Main Deck: Deluxe A Original and deluxe cabins #3, 4, 7, 8**

These very spacious cabins, originally occupied by guests of the Posts, have a mix of bed types and decorative motifs. These wood-paneled rooms feature various armchairs, marble fireplaces, and antique furnishings. All have two portholes, two chairs, an antique nightstand, antique secretary, decorative marble fireplace, antique desk, and small safe. Bathrooms are well appointment with a marble sink and gold-plated fixtures. These cabins offer different bed configurations (call for details).



## Category OS

**Main Deck: Owners Suite #1-2**

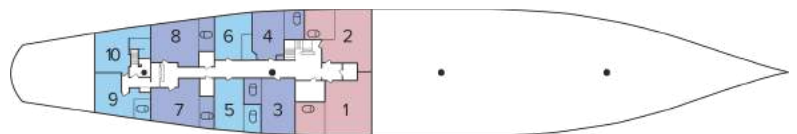
These incomparable suites were occupied by Marjorie Merriweather Post (#1) and E.F. Hutton (#2). They have king-size beds and grand marble bathrooms. They remain a testament to Marjorie Merriweather Post's indulgence in luxury with their large marble baths, fireplaces, overstuffed armchairs, and walk-in closets. Both have portholes, two armchairs, two antique nightstands, antique secretary, decorative marble fireplace, walk-in closet, and small safe.



# Deck Plans

## Main Deck

- Category OS
- Category DA
- Category DB



## Promenade Deck

- Category 1
- Category 2
- Category A Solo



## Lido Deck

- Category 3
- Category 4





# Ship amenities

## Public Areas

The covered lido bar is a superb place to congregate and enjoy the outdoors. The open-air “Blue Lagoon” is a wonderful place to relax. There is a sumptuous lounge and guests are welcome on the “open bridge” to learn how *Sea Cloud* is navigated and sailed.



## Meals

Meals are served in single seatings and in a casual setting and focus on local and Continental cuisine. Wines are included at lunch and dinner. Refreshments are always available.



## Cabins

30 outside cabins. All cabins face outside with windows or portholes. Cabins are equipped with a safe, hairdryers, and an outlet for razor. Bathrooms are well appointed with marble sinks and gold-plated fixtures.

## Expedition Equipment

Zodiacs make for quick landings and shoreline exploration, and in the Caribbean explore the vibrant undersea by snorkeling.

## Special Features

Internet connectivity and laundry services are available. A doctor is available 24 hours a day free of charge. Enjoy black-tie amenities in shorts and deck shoes. While the ship's spaces are suitable for formality, you'll find a certain lighthearted delight in enjoying it in casual dress.



# Special Offers

## CELEBRATE LIFE'S MILESTONES

Celebrate a milestone with a group of eight or more and enjoy a special amenity package including: 5% savings on voyage fares, custom group photo, US\$150 shipboard credit for the group, and other special gifts. Milestone celebration to be communicated at time of booking. Valid for new bookings only on select departures, subject to availability, not applicable on airfare or extensions, and may not be combined with other offers. Deposit, final payments, and cancellation policies for group travel vary from our regular policies. Call for details.

---

## 10% OFF BACK-TO-BACK VOYAGES

Save 10% on consecutive departures, applicable on voyage fares only and not valid on extensions or airfare. Valid for new bookings only, subject to availability, and may not be combined with other offers. Call for details.

---

## SAVE 5% TRAVELING AS A GROUP

Save 5% when traveling as a group of eight or more people. Valid on voyage fares only and not applicable on extensions or airfare. Deposit, final payments, and cancellation policies for group travel vary from our regular policies. Valid for new bookings only, subject to availability, and may not be combined with other offers. Call for details.

---

## COMBINING OFFERS

Certain offers may be combinable, up to two savings opportunities, except where noted otherwise. For example, travel with a group of 8 or more on back-to-back expeditions, and take advantage of both savings.

## Included in price

All accommodations aboard ship per itinerary; all meals as indicated in the itinerary, both aboard and onshore; beer, wine, cocktails, and spirits aboard the ship (except certain super premium brands which are available for purchase); hors d'oeuvres, 24-hour access to snacks, premium coffees and teas, non-alcoholic beverages, and filtered water; excursions and airport transfers to and from recommended flights, as indicated in the itinerary; crew gratuities; guidance and company of our leading expedition staff; assistance by the Lindblad Expeditions-National Geographic certified photo instructor; presentations by expedition staff and expert guest speakers; complimentary reusable water bottle; services of a physician, physician's assistant, nurse practitioner, or paramedic; 24-hour access to shared spaces; park and site entrance fees, special access permits, and port taxes. Unused services or items included in our programs are non-refundable.

---

## Not included in price

Airfare (except flights when indicated as included); pre- and post-expedition extensions; additional hotel nights (except when indicated as included); private transfers; laundry, Wi-Fi, and phone services (except when indicated as included); travel protection plans; and passport, visa, and immigration fees.

---

## Travel protection plan

We strongly recommend our guests to take advantage of our Travel Protection Plan. This plan offers comprehensive coverage to protect you from cancellation fees, costs incurred due to trip delays/interruption, damage or loss of baggage, medical assistance, and evacuation during your travels. Our Travel Protection Plan is available for U.S. residents only, and may be purchased any time prior to final payment due date, Travel Protection premiums are non-refundable once plan is purchased. Learn more about our Travel Protection "Plus" Plan: <https://www.expeditions.com/terms-conditions/travel-protection-plan/>

---

## Cancellation policy

Review our cancellation policy: <https://www.expeditions.com/cancellation-policy/>