








# Sailing the Caribbean aboard Sea Cloud

Experience the romance of tall ship sailing in the trade winds, gliding into bays of idyllic islands. Snorkel or swim in the warm Caribbean waters and explore tropical reefs and undersea gardens. Stroll waterfront towns where the patois reflects the mosaic of cultures in these islands. Hike a jungle trail in search of parrots or enjoy a palm-studded beach. Each island offers a unique rhythm, with opportunities to indulge in active or relaxing pursuits.

From  
**\$ 12,072** / per person  
Does not include flights

 <b>DATES</b> Jan and Feb	 <b>DURATION</b> 8 Days
 <b>SHIPS</b> <i>Sea Cloud</i>	
 <b>STARTS AT</b> Bridgetown, Barbados	→  <b>ENDS AT</b> Bridgetown, Barbados



# Highlights

- ★ Sail the sparkling Caribbean Sea aboard the historic square-rigger *Sea Cloud*
- ★ Stand on deck and watch the orchestrated frenzy of the crew members going aloft in the web of riggings to hand-set 30 sails
- ★ Swim and snorkel in pristine tropical waters and explore remote cays and beaches
- ★ Explore 18th-century Fort Napoléon, colonial outposts, and an intriguing mix of cultures with our expedition staff at your side





# Day by day

■ DAY 1

## Bridgetown, Barbados / Embark Ship

Arrive in Barbados and settle into your cabin aboard the elegant *Sea Cloud*. Cast off this evening, and enjoy dinner and our first Caribbean sunset.

**Arrival Time:** Arrive before 4:00 p.m. local time.

**Arrival City:** Bridgetown, Barbados

Meals included: dinner

◇ DAY 2

## Under Sail

Begin the morning on deck, where sailors climb aloft to raise *Sea Cloud*'s sails by hand. Enjoy a full day under sail across the Caribbean. Relax with a book, photograph the ship's exquisite details, and attend talks by our experts on the natural history and culture of the islands that await.

Meals included: breakfast, lunch, dinner

◇ DAY 3

## Dominica

Spend the day exploring Dominica, known as "the nature island" for its spectacular beauty and many protected reserves. Hike through enchanting rainforest. Join our historian in exploring the ruins of Fort Shirley, an 18th-century British garrison, and learn about Dominica's turbulent colonial history. Go for a refreshing swim before we cast off in time to enjoy a sunset at sea.

Meals included: breakfast, lunch, dinner

◇ DAY 4

## Îles des Saintes, Guadeloupe / Under Sail

Distinctly French in character and culture, the shops, homes, and people of Les Saintes are colorful, tasteful, and delightful. Enjoy picture-postcard views from Fort Napoléon, with its cactus garden, iguanas, and maritime museum. Then stroll through French colonial Terre-de-Haut and swim and snorkel from a nearby sandy beach. In the afternoon, we set sail south on a beam reach, as the winds fill the square sails in a glorious spectacle.

Meals included: breakfast, lunch, dinner

◇ DAY 5

## Under Sail / Bequia, the Grenadines

Sail aboard our magnificent ship in the morning and anchor at tiny Bequia by afternoon. Explore the charming waterfront and immerse yourself in this unique maritime culture. Go snorkeling at a nearby reef, swim along palm-fringed beaches, or join our staff to visit a traditional model boat museum. In Port Elizabeth, browse the local market and stroll the waterfront Belmont Walkway, or choose to go snorkeling and swimming.

Meals included: breakfast, lunch, dinner

◇ DAY 6

## Under Sail / Carriacou, Grenada

Spend the morning aboard *Sea Cloud* under sail, exploring the idyllic Grenadine Islands with their quintessential tropical cays. This afternoon, enjoy snorkeling and swimming in Tyrell Bay or a guided stroll of Hillsborough on the island of Carriacou.

Meals included: breakfast, lunch, dinner

◇ DAY 7

## Soufrière, St. Lucia / Under Sail

Arrive at St. Lucia and anchor under the island's iconic twin peaks, the Pitons, which rise dramatically above the sea. After exploring the fishing port of Soufrière, drive into St. Lucia's active volcanic crater and discover the otherworldly landscape of mud pools and sulfur springs. Take a tropical walk through botanical gardens alive with birds and the backdrop rush of Diamond Falls. Spend the afternoon sailing as we return to Barbados.

Meals included: breakfast, lunch, dinner

## ■ DAY 8

### Bridgetown, Barbados / Disembark Ship

Disembark and transfer to the airport for your return flight home.

**Departure Time:** Depart after 12:00 p.m. local time.

**Departure City:** Bridgetown, Barbados

Meals included: breakfast

### Expedition

Bridgetown, Barbados → Bridgetown, Barbados

### 2025 Departure Dates

Aboard *Sea Cloud*

19 Jan	26 Jan		
--------	--------	--	--





## Sea Cloud

---

Guests

58

Cabins

30

---

**The historic Marjorie Merriweather Post sailing yacht, the latest tall ship in private hands, was built in 1931 and carries 30 sails measuring a total of 32,000 Sq. ft.**

Traveling aboard *Sea Cloud*, a historic four-masted barque, is an overall multisensory experience of the rarest kind—and this is true wherever you choose to explore. *Sea Cloud* in the Caribbean is idyllic because little competes with the sensual pleasure of the balmy air and the constant trade winds that invite everyone out on deck. And *Sea Cloud* in the Mediterranean is quintessential because it provides nonstop opportunities to set off from our anchorages or ports—where *Sea Cloud* is invariably the most beautiful ship—to explore the extraordinary beauty and charm of coastal towns and linger among antiquities and sites "sacred" to Western civilization.

The sheer opulence—antique furnishings, marble fireplaces, gold fixtures, exquisite accoutrements—of *Sea Cloud* is a testament to the efforts of the ship's original owners, businesswoman and socialite heiress Marjorie Merriweather Post and finance tycoon E.F. Hutton, who spared no expense in tasteful decoration. Supposedly they never asked the price of a single item while outfitting her.

Whether you're passively watching the athletic young crew scrambling high in the rigging, lolling in what Marjorie Merriweather Post called the "Blue Lagoon," or learning to capture the sun on the sails with your Lindblad-National Geographic certified photo instructor, life aboard *Sea Cloud* is either the point or the perfect interlude between explorations. And remember, another rarity we offer is *Sea Cloud* elegance, enjoyed with Lindblad Expeditions' signature informality—pack your deck shoes and shorts, please!

Return to the golden age of sail aboard this hand-sailed, four-masted ship. Built in 1931 by Wall Street businessman E.F. Hutton for his wife, Marjorie Merriweather Post, *Sea Cloud* carries 30 sails measuring a total of 32,000 square feet.





# Cabin Categories

## Category 1

**Promenade Deck: #28-29**

These cabins have two single beds and a large panorama window. Cabin features include telephones, temperature controls, a minibar, closet, dressing table, small safe, and a beautiful bathroom with marble sink and gold-plated fixtures.



## Category 2

**Promenade Deck: #18-25**

These cabins have two single beds, panorama window, dressing table, and efficient bathrooms with showers, marble sink, and gold-plated fixtures. They have telephones, temperature controls, a minibar, and a small safe.



## Category 3

**Lido Deck: #32-37**

These cabins have two single beds (which can be pushed together to make a queen-size bed, with one side against the wall), a writing desk and chair, panorama window, bathrooms with a marble sink, and gold-plated fixtures. They have telephones, temperature controls, a minibar, and a small safe.



## Category 4

**Lido Deck: #30-31**

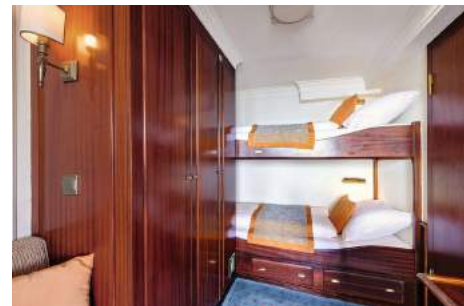
Cabins have a queen-size bed, a forward-facing panorama window and a side-facing window, walk-in closet, a writing desk and chair, and bathrooms with a marble sink, and gold-plated fixtures. They have telephones, temperature controls, a minibar, and a small safe.



## Category A Solo

**Promenade Deck: #16-17**

These solo cabins feature single beds and a window; they once housed the ship's officers. They are equipped with temperature controls and a minibar. Ice is delivered twice daily. Each cabin is equipped with a telephone, small sofa, and small safe. Bathrooms feature marble sinks and gold-plated fixtures.



## Category DB

**Main Deck: Deluxe B Original and deluxe cabins #5, 6, 9, 10**

Located on the Main Deck, these very large cabins, originally occupied by guests (and the nannies, #9-10) of the owner, have a mix of bed types and decorative motifs. All have portholes, one chair, table, two nightstands, dressing table with mirror, walk-in closet and small safe. Bathrooms are well appointed with a marble sink and gold-plated fixtures.



## Category DA

**Main Deck: Deluxe A Original and deluxe cabins #3, 4, 7, 8**

These very spacious cabins, originally occupied by guests of the Posts, have a mix of bed types and decorative motifs. These wood-paneled rooms feature various armchairs, marble fireplaces, and antique furnishings. All have two portholes, two chairs, an antique nightstand, antique secretary, decorative marble fireplace, antique desk, and small safe. Bathrooms are well appointment with a marble sink and gold-plated fixtures. These cabins offer different bed configurations (call for details).



## Category OS

**Main Deck: Owners Suite #1-2**

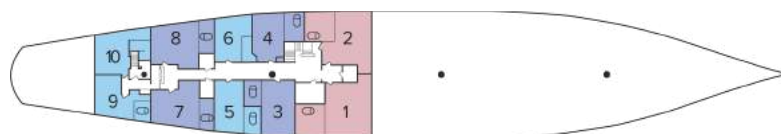
These incomparable suites were occupied by Marjorie Merriweather Post (#1) and E.F. Hutton (#2). They have king-size beds and grand marble bathrooms. They remain a testament to Marjorie Merriweather Post's indulgence in luxury with their large marble baths, fireplaces, overstuffed armchairs, and walk-in closets. Both have portholes, two armchairs, two antique nightstands, antique secretary, decorative marble fireplace, walk-in closet, and small safe.



# Deck Plans

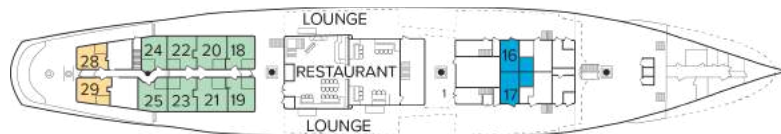
## Main Deck

- Category OS
- Category DA
- Category DB



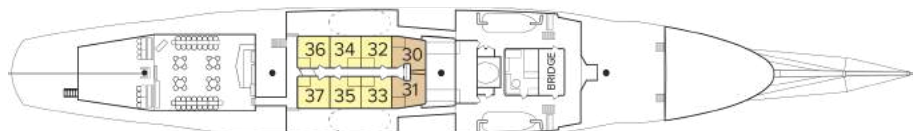
## Promenade Deck

- Category 1
- Category 2
- Category A Solo



## Lido Deck

- Category 3
- Category 4



# Ship amenities

## Public Areas

The covered lido bar is a superb place to congregate and enjoy the outdoors. The open-air “Blue Lagoon” is a wonderful place to relax. There is a sumptuous lounge and guests are welcome on the “open bridge” to learn how *Sea Cloud* is navigated and sailed.



## Meals

Meals are served in single seatings and in a casual setting and focus on local and Continental cuisine. Wines are included at lunch and dinner. Refreshments are always available.



## Cabins

30 outside cabins. All cabins face outside with windows or portholes. Cabins are equipped with a safe, hairdryers, and an outlet for razor. Bathrooms are well appointed with marble sinks and gold-plated fixtures.

## Expedition Equipment

Zodiacs make for quick landings and shoreline exploration, and in the Caribbean explore the vibrant undersea by snorkeling.

## Special Features

Internet connectivity and laundry services are available. A doctor is available 24 hours a day free of charge. Enjoy black-tie amenities in shorts and deck shoes. While the ship's spaces are suitable for formality, you'll find a certain lighthearted delight in enjoying it in casual dress.





## Special Offers

### CELEBRATE LIFE'S MILESTONES

Celebrate a milestone with a group of eight or more and enjoy a special amenity package including: 5% savings on voyage fares, custom group photo, US\$150 shipboard credit for the group, and other special gifts. Milestone celebration to be communicated at time of booking. Valid for new bookings only on select departures, subject to availability, not applicable on airfare or extensions, and may not be combined with other offers. Deposit, final payments, and cancellation policies for group travel vary from our regular policies. Call for details.

---

### 10% OFF BACK-TO-BACK VOYAGES

Save 10% on consecutive departures, applicable on voyage fares only and not valid on extensions or airfare. Valid for new bookings only, subject to availability, and may not be combined with other offers. Call for details.

---

### SAVE 5% TRAVELING AS A GROUP

Save 5% when traveling as a group of eight or more people. Valid on voyage fares only and not applicable on extensions or airfare. Deposit, final payments, and cancellation policies for group travel vary from our regular policies. Valid for new bookings only, subject to availability, and may not be combined with other offers. Call for details.

---

### COMBINING OFFERS

Certain offers may be combinable, up to two savings opportunities, except where noted otherwise. For example, travel with a group of 8 or more on back-to-back expeditions, and take advantage of both savings.

## Included in price

All accommodations aboard ship per itinerary; all meals as indicated in the itinerary, both aboard and onshore; beer, wine, cocktails, and spirits aboard the ship (except certain super premium brands which are available for purchase); hors d'oeuvres, 24-hour access to snacks, premium coffees and teas, non-alcoholic beverages, and filtered water; excursions and airport transfers to and from recommended flights, as indicated in the itinerary; crew gratuities; exploration tools curated to destination, such as snorkeling equipment (including wetsuits, masks, and fins); guidance and company of our leading expedition staff; assistance by the Lindblad Expeditions-National Geographic certified photo instructor; presentations by expedition staff and expert guest speakers; complimentary reusable water bottle; services of a physician, physician's assistant, nurse practitioner, or paramedic; 24-hour access to shared spaces; park and site entrance fees, special access permits, and port taxes. Unused services or items included in our programs are non-refundable.

---

## Not included in price

Airfare (except flights when indicated as included); pre- and post-expedition extensions; additional hotel nights (except when indicated as included); private transfers; laundry, Wi-Fi, and phone services (except when indicated as included); travel protection plans; and passport, visa, and immigration fees.

---

## Travel protection plan

We strongly recommend our guests to take advantage of our Travel Protection Plan. This plan offers comprehensive coverage to protect you from cancellation fees, costs incurred due to trip delays/interruption, damage or loss of baggage, medical assistance, and evacuation during your travels. Our Travel Protection Plan is available for U.S. residents only, and may be purchased any time prior to final payment due date, Travel Protection premiums are non-refundable once plan is purchased. Learn more about our Travel Protection "Plus" Plan: <https://www.expeditions.com/terms-conditions/travel-protection-plan/>

---

## Cancellation policy

Review our cancellation policy: <https://www.expeditions.com/cancellation-policy/>