

Australia and New Zealand & French Polynesia & Pacific Islands
9° 26' S 159° 58' E

Roots of the Pacific: Exploring New Zealand and Melanesia

Following in the wake of Captain Cook, journey from New Zealand's North Island to the Solomon Sea. Delve into a fascinating history of explorers, convicts, and traders, and learn about the rich cultures of the Māori and the Melanesians. Examine traditional carved houses and ancient caves and meet villagers on some of the most remote islands of the South Pacific. Along the way, don your snorkel and fins to discover incredible coral reefs and lagoons.

From
\$ 12,994 / per person
Does not include flights



DATES

Oct and Dec



DURATION

15 Days



SHIPS

National Geographic Orion



STARTS AT

Nadi, Fiji



ENDS AT

Auckland,
New
Zealand

Itinerary note: Routing may vary and stops may be subject to modification and/or permitting.

Highlights

- ★ Encounter an impressive diversity of cultures from the Māori of the Bay of Islands to the spear dancers of the Solomons, and delve into their artistic and spiritual traditions
- ★ Venture to the former penal colony of Norfolk Island, now a UNESCO World Heritage site boasting the unusual trees called Norfolk Island pines
- ★ Visit the island nation of New Caledonia, made up of immaculate beaches and steep coral cliffs, and hike into the tropical forest to a vanilla plantation or enjoy world-class snorkeling among diverse coral species
- ★ Visit World War II sites from the Battle of Guadalcanal, including an optional dive on the wreck of the S.S. *President Coolidge*





Day by day

DAY 1

Nadi, Fiji

Arrive in Nadi and transfer to our hotel. Join us for a welcome briefing this evening to meet your fellow travelers.

Arrival Time: Arrive by 4:00 p.m.

Arrival City: Nadi, Fiji

DAY 2

Nadi / Honiara, Solomon Islands / Embark Ship

Our expedition begins with a flight to Honiara, a former U.S. supply depot and strategic WWII battleground. Tour the city before embarking *National Geographic Orion*.

Meals included: breakfast, lunch, dinner

DAY 3

Owaraha Island

On the tiny isle of Owaraha (formerly known as Santa Ana), we are greeted with a traditional dance performed by villagers in elaborate costumes, body paint, and masks. Walk across the small island to Nafinotoga to see Spirit Houses containing the skulls and bones of ancient chiefs of the Snake Clan and the Turtle Clan.

Meals included: breakfast, lunch, dinner

DAY 4

Utupua

Located in the Santa Cruz Island group, Utupua is a high volcanic island surrounded by a lagoon and a fringing coral reef. Zodiac to the village of Nimbau for a welcome song and dance performance. Enjoy a walk through the village with the locals and see

a display of their handmade fishing canoes. Take a Zodiac ride along the shores, lined with dense mangroves and boasting a variety of wildlife.

Meals included: breakfast, lunch, dinner

DAY 5

Fenualoa

Visit Fenualoa, which is part of the Reef Islands in the northwestern province of Temotu. On shore we will be greeted by the local islanders and enjoy a tour of their village before snorkeling or swimming in the brilliant blue waters of the reef.

Meals included: breakfast, lunch, dinner

DAY 6

Lo Island, Torres Islands

Arrive to the small village of Lo Island by Zodiac, meandering along a beautiful mangrove lagoon. Meet the lovely villagers and experience some of the local *kastom* dances. Hike across the island to a cave and look for wildlife along the way. If conditions permit, snorkel in along the beautiful fringing reef of the island.

Meals included: breakfast, lunch, dinner

DAY 7

Espiritu Santo, Vanuatu

Captain James Cook named the islands of Vanuatu the New Hebrides because they reminded him of the rugged isles off Scotland's coast. On the main island of Espiritu Santo, experience one of the best wreck dives in the world: the S.S. *President Coolidge*, a luxury cruise liner used as a troop carrier during World War II, or experience the Matevulu Blue Hole, a jewel-blue freshwater source surrounded by jungle.

Meals included: breakfast, lunch, dinner

◇ DAY 8

Ambrym

Ambrym is known for its active volcanoes, black-sand beaches, and mystery and magic. Arrive ashore to witness the striking Rom dance, traditionally a secret event. Involving incredible masks and elaborate outfits that represent spirits, this is a cultural experience specific only to this island.

Meals included: breakfast, dinner, lunch

◇ DAY 9

Moso

Clear into Vanuatu at Port Vila. Later, arrive at Moso and spend the day snorkeling or diving at one of the most incredible locations you will experience on this voyage. The crystal clear waters reveal colorful corals, sea turtles, eagle and cowtail rays, reef fish, and pelagics. Dugongs and dolphins can sometimes be encountered here as well.

Meals included: breakfast, lunch, dinner

◇ DAY 10

New Caledonia

Visit this vibrant French overseas territory and swim in the world's largest enclosed lagoon, included in the UNESCO World Heritage List for its outstanding beauty, unique geography, and incredible coral diversity. Alternatively, join our naturalists for a birding walk through the dense canopy of the forest.

Meals included: breakfast, lunch, dinner

◇ DAY 11

At Sea

As we make our passage to Norfolk Island, enjoy life on board. Unwind with a massage in the spa or a

session in the fitness center, get lost in a book in the library, or simply soak up the views from the rooftop observation deck. Learn about the area from our onboard historians, naturalists, and photographers, and savor delectable dining options.

Meals included: breakfast, lunch, dinner

◇ DAY 12

Norfolk Island, Australia

Explore Norfolk Island, discovered by Captain Cook in 1774. Covered in dense forests of pines, it was initially valued as a ready source of shipbuilding lumber. Later, it became a British penal colony and then a settlement for Pitcairn Islanders, who themselves were descendants of the mutineers from the famous Bounty. Explore the ruins of the prison and enjoy walking around the main settlement at Burnt Pine. Later, take a long nature hike in Norfolk National Park to look for the endemic tree ferns and land birds. As we depart, look for large groups of seabirds alongside the dramatic island scenery.

Meals included: breakfast, dinner, lunch

◇ DAY 13

At Sea

Spend today exploring New Zealand's East Coast. Your captain and Expedition Leader will decide whether to spend the day at sea, exploring places ashore, or doing a combination of both. Visit the Bridge to study our route on the navigational charts, and attend talks by our experts.

Meals included: breakfast, lunch, dinner

◇ DAY 14

Bay of Islands, New Zealand

The Bay of Islands is an area encompassing more than 140 subtropical islands, boasting an abundance of wildlife and fascinating history. Visit the Waitangi Treaty Grounds, a place of immeasurable cultural,

spiritual, and historical significance, and learn of the historical events for which these grounds are remembered.

Meals included: dinner, lunch, breakfast

■ DAY 15

Auckland, New Zealand / Disembark Ship

Disembark after breakfast and join a tour of this vibrant city center. We'll stop for lunch midday before arriving to Auckland airport in the late afternoon for onward flights.

Meals included: breakfast, lunch

2024 (Southbound)

Nadi, Fiji → Auckland, New Zealand

2024 Departure Dates

Aboard *National Geographic Orion*

09 Oct		
--------	--	--

Alternative Routes

Visit Expeditions.com for more information.

2024 Departure Dates

21 Dec



National Geographic Orion

Guests

102

Cabins

53

Joining the Lindblad fleet in 2013, the state-of-the-art *National Geographic Orion* serves as a luxurious base camp for voyages to the far-flung corners of the planet.

Built in Germany by the Cassens shipyard, the 102-guest *National Geographic Orion* was created with a high-ice class to be able to venture safely into polar regions. A ship of her size is seldom built with such ice-cutting ability, which makes her a rarity. She is yacht-scale, yet rugged enough to venture far afield, making her a perfect addition to the Lindblad fleet, which she joined in 2013. Her size and nimbleness offer the perfect combination of safety and liberty to voyage untrammelled locations. In fact, *National Geographic Orion* currently holds the distinction of having sailed further south than any other Lindblad vessel.

Her menu, created by famed Australian chef, Serge Dansereau, owner of Sydney's acclaimed Bather's Pavilion restaurant, enormously popular with *National Geographic Orion's* guests, so impressed Sven Lindblad, that Serge, a chef-owner who shared the Lindblad commitment to serving local and sustainable food, was enlisted to design the dining program for the entire Lindblad-National Geographic fleet.

National Geographic Orion is gracious and intimate, with a rewarding, almost clubby feeling. Of her many amenities and features, the most appealing is her outside deck space which beckons in the balmy reaches of the Pacific, and on those days in Antarctica when the midnight sun and the spectacle of the ice makes going indoors, let alone going to bed, impossible.



Cabin Categories

Category 1

Main Deck: #316, 318-321

Cabins feature a luminous oval window and configurable beds: two single beds that can be converted to a queen. An armchair, reading lamps, a flat screen TV, two bedside tables, coffee table, desk, and climate controls complete the amenities. Marble bathrooms are generously sized and include a spacious shower stall with a glass door.



Category 2

Main Deck: #302-312, 314, 315, 317

Cabins feature a luminous oval window and configurable beds: two single beds that can be converted to a queen. An armchair, reading lamps, a flat screen TV, bedside table, coffee table, desk, and climate controls complete the amenities. Marble bathrooms are generously sized and include a spacious shower stall with a glass door.



Category 3

Upper Deck: #401-412, 414-419

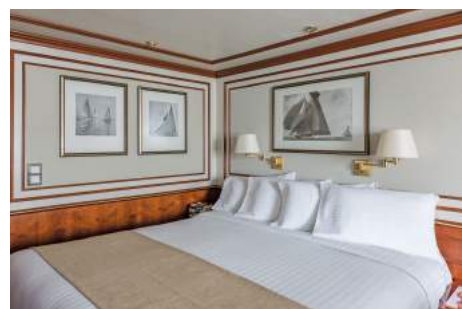
These suites feature a sitting area with a large window, a sofa—except slightly smaller #401 & #402—an armchair or two, writing/laptop desk, reading lamps, coffee table, flat screen TV, bedside table, & climate controls. Beds are configurable (call for details). Marble bathrooms include a spacious shower stall with a glass door.



Category 4

Bridge Deck: #511, 515

These two suites feature separate sleeping and sitting areas, with a chair and armchair, coffee table, and a two-cushion sofa facing an expansive window. Beds are configurable (call for details). Ample storage, reading lamps, a flat screen TV, and climate controls complete the amenities. Marble bathrooms are generously sized and include a spacious shower stall with a glass door.



Category 5

Bridge Deck: #501, 503-506, 508

These spacious suites feature open living areas and sliding glass doors opening to a shared French balcony. Beds are configurable (call for details). A separate sitting area with armchairs and a sofa, a writing/laptop desk, coffee table, well-placed reading lamps, a flat screen TV, and climate controls complete the decor. Marble bathrooms are generously sized and include a spacious shower stall with a glass door.



Category 6

Bridge Deck: #502, 507, 509*, 510

These large, elegant suites feature a French balcony, except for #509 which has double windows. Each provides a separate living area with a sofa and two armchairs, coffee table, except for #502, which uniquely offers a 'soaking tub with a view' in addition to a shower stall and expansive vanity. All cabins have reading lamps, a flat screen TV, and climate controls. Marble bathrooms are generously sized and include a spacious shower stall with a glass door.



Category 1 Solo

Main Deck: #301, 322, 323

These solo cabins feature a window or two portholes, a queen-size bed, except for #301 which has a double bed, writing desk and chair, climate controls, reading lamps, coffee table, two bedside tables, and a TV. Marble bathrooms are generously sized and include a roomy shower stall with a glass door.



Category 3 Solo

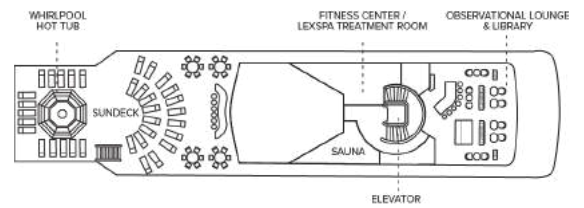
Upper Deck: #512

This solo suite features two single beds and two large windows, plus two armchairs and a small table, reading lamps, coffee table a flat screen TV, and climate controls. The marble bathroom is generously sized and includes a spacious shower stall with a glass door.



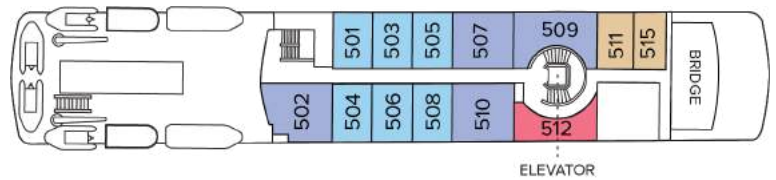
Deck Plans

Observation Deck



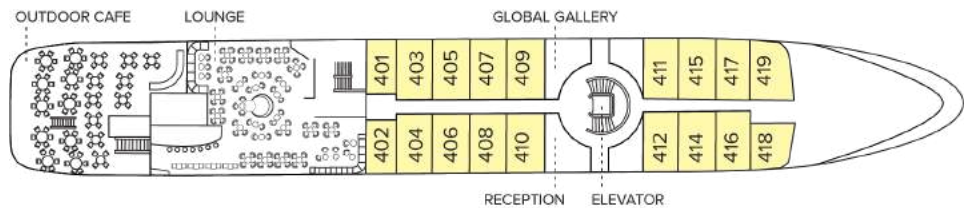
Bridge Deck

- Category 4
- Category 5
- Category 6
- Category 3 Solo



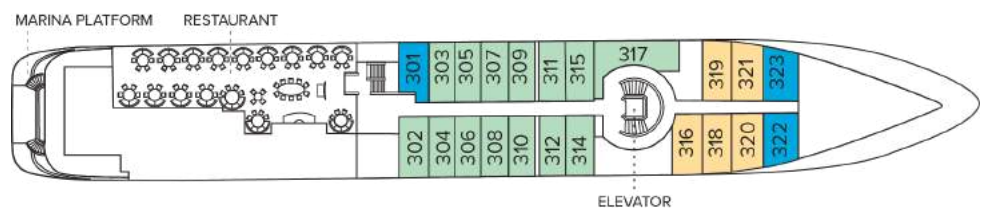
Upper Deck

- Category 3



Main Deck

- Category 1
- Category 2
- Category 1 Solo



Expedition Deck



Ship amenities

Public Areas

Reception; two dining areas; lounge with bar and state-of-the-art presentation facilities; B&H Photo locker; sundeck with a whirlpool hot tub that doubles as a plunge pool in warm climates; observation lounge and library; global gallery; a marina platform; plus open access to the Bridge, the Captain, officers and on-duty wildlife spotters.

Meals

Meals are served in the dining room, or weather permitting, the outdoor café, at a single seating with unassigned tables for an informal atmosphere and easy mingling. Menus feature sustainable choices, local where possible.

Cabins

All cabins face outside with windows or portholes, private bathroom, and climate controls. Cabins feature a coffee table, lounge chair, desk, phone, TV with on demand entertainment, multiple outlets and USB, mini refrigerator, and safe. Luxury linens and pillows. Botanically inspired shampoo, conditioner, shower gel, and lotion are all available in cabin bathrooms, as well as an Expedition Essential Kit. Hair dryers, complimentary insulated water bottles and a National Geographic Atlas is available in each cabin.

Expedition Equipment

Zodiac landing craft, a fleet of double kayaks, a crow's nest camera, a hydrophone, underwater video cameras, video microscope, and an ROV. Plus, for South Pacific voyages: snorkeling gear for all guests, scuba gear for a number of pre-qualified guests, stand-up paddleboards, glass-bottom Zodiac, and splash-cam.

Special Features

A full-time doctor, undersea specialist, National Geographic photographer, Lindblad-National Geographic certified photo instructor and video chronicler. On all South Pacific voyages, there are a minimum of two dive masters. A central staircase, and elevator reaches all decks. Enjoy teatime, daily. And the smoothies served after the sunrise stretch sessions on the sundeck in Polynesia. Don't miss either opportunity.

Wellness

A fitness center, LEXspa treatment room and sauna, staffed by wellness specialists.

Self-Disinfecting Ships

ACT Clean Coat™ is a light-activated, self-disinfecting cleaning process that continuously breaks down viruses, bacteria, mold, and airborne allergens across all ship surfaces. This non-toxic, chemical-free system also helps us save over one million gallons of water each year in our cleaning procedures.

Special Offers

SUITE EXCLUSIVES

Spacious living areas and incredible views immerse you in the beauty of your marine surroundings. Our new Suite Exclusives package helps make your voyage all the more memorable. [Learn more](#)

CELEBRATE LIFE'S MILESTONES

Celebrate a milestone with a group of eight or more and enjoy a special amenity package including: 5% savings on voyage fares, custom group photo, US\$150 shipboard credit for the group, and other special gifts. Milestone celebration to be communicated at time of booking. Valid for new bookings only on select departures, subject to availability, not applicable on airfare or extensions, and may not be combined with other offers. Deposit, final payments, and cancellation policies for group travel vary from our regular policies. Call for details.

10% OFF BACK-TO-BACK VOYAGES

Save 10% on consecutive departures, applicable on voyage fares only and not valid on extensions or airfare. Valid for new bookings only, subject to availability, and may not be combined with other offers. Call for details.

BRINGING THE KIDS

We believe sharing an expedition with children is a life-enhancing experience. Take \$500 off for each child under the age of 18 on any departure. Not applicable on extensions or airfare. Call for details.

SAVE 5% TRAVELING AS A GROUP

Save 5% when traveling as a group of eight or more

people. Valid on voyage fares only and not applicable on extensions or airfare. Deposit, final payments, and cancellation policies for group travel vary from our regular policies. Valid for new bookings only, subject to availability, and may not be combined with other offers. Call for details.

COMBINING OFFERS

Certain offers may be combinable, up to two savings opportunities, except where noted otherwise. For example, travel with a group of 8 or more on back-to-back expeditions, and take advantage of both savings.

Included in price

All accommodations aboard ship or in hotels per itinerary; all meals as indicated in the itinerary, both aboard and onshore; beer, wine, cocktails, and spirits aboard the ship (except certain super premium brands which are available for purchase); hors d'oeuvres, 24-hour access to snacks, premium coffees and teas, non-alcoholic beverages, and filtered water; excursions and airport transfers to and from recommended flights, as indicated in the itinerary; crew gratuities; exploration tools curated to destination, such as Zodiacs, stand-up paddleboards, kayaks, snorkeling equipment (including wetsuits, masks, and fins); guidance and company of our leading expedition staff; assistance by the National Geographic Photography Expert and Lindblad Expeditions-National Geographic certified photo instructor; access to the OM System Photo Gear Locker; presentations by expedition staff and expert guest speakers; complimentary reusable water bottle; services of a physician, physician's assistant, nurse practitioner, or paramedic; morning stretch classes and 24-hour access to exercise equipment; 24-hour access to lounges, observation decks, library, and other shared spaces; park and site entrance fees, special access permits, and port taxes. Unused services or items included in our programs are non-refundable.

Not included in price

Airfare (except flights when indicated as included); pre- and post-expedition extensions; additional hotel nights (except when indicated as included); private transfers; laundry, spa treatments, scuba diving for pre-qualified divers on select voyages*, Wi-Fi, and phone services (except when indicated as included); travel protection plans; and passport, visa, and immigration fees.

*Scuba Diving Requirements

- Dives can be challenging so divers must have ample previous experience
- Divers need at least 25 lifetime dives if you're advanced open water and at least 35 if you're just open water
- Divers need to have completed an open water dive or professional refresher course within 12 months of the voyage
- Divers need to receive medical clearance to dive from a doctor (form provided upon registration) and provide proof of dive insurance

Travel protection plan

We strongly recommend our guests to take advantage of our Travel Protection Plan. This plan offers comprehensive coverage to protect you from cancellation fees, costs incurred due to trip delays/interruption, damage or loss of baggage, medical assistance, and evacuation during your travels. Our Travel Protection Plan is available for U.S. residents only, and may be purchased any time prior to final payment due date. Travel Protection premiums are non-refundable once plan is purchased. Learn more about our Travel Protection "Plus" Plan: <https://www.expeditions.com/terms-conditions/travel-protection-plan/>

Cancellation policy

Review our cancellation policy: <https://www.expeditions.com/cancellation-policy/>